

Growing Brimbank as a beacon site

The AHPC has established two integrated and interdependent programs of work:

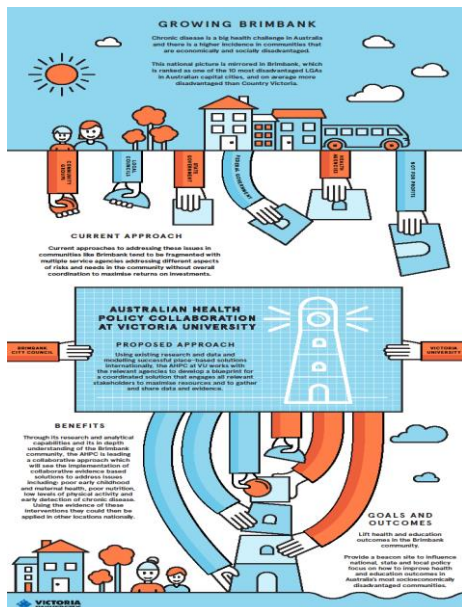
- **National health and public policy strategy:** a research-to-policy translation program to inform and influence national health and public policies to prevent and better manage chronic diseases
- **Growing Brimbank program:** a long-term, place-based research program applying evidence based interventions to risk factors for poor health, wellbeing and education in a community with significant levels of socioeconomic disadvantage.

These two programs are designed to inform each other in an iterative cycle of:

- policy challenges to evidence based interventions
- evidence of 'what works' to policy information and influence.



AHPC has the mandate to influence health and education, which requires addressing inequities experienced through socio-economic disadvantage. Significant work has been focused on developing Brimbank as a beacon site for similarly disadvantaged communities using a place based approach to lifting community health and development outcomes.



Local testing of evidence-informed target groups, risk factors and system failure points, applying evidence of 'what works', and building resources and materials to assist implementation of systems change, all contribute to the capacity to:

- drive implementation success
- demonstrate measureable improvements
- use the results to inform and influence policy and practice
- accelerate uptake in other communities.