

**VICTORIA UNIVERSITY**

UNIQUELY YOU

# 2027 COURSE GUIDE

Welcome to VU

The VU Block Model®

No one sees you like VU

VU Early Entry

Uniquely VU

Uni, your way

Health

Education

Law

Business

Cyber Security & IT

Sport

Trades

TAFE at VU

Meet your career co-captain

Your career journey

2027 courses

Glossary

Our locations

What next & how to apply

FAQs

Meet our grads

Join us at our 2026 Open Day

# Your career starts here



Peer Engagement

Skills Development

QILT Student Experience Survey 2024



[Welcome to VU](#)

[The VU Block Model®](#)

[No one sees you like VU](#)

[VU Early Entry](#)

[Uniquely VU](#)

[Uni, your way](#)

[Health](#)

[Education](#)

[Law](#)

[Business](#)

[Cyber Security & IT](#)

[Sport](#)

[Trades](#)

[TAFE at VU](#)

[Meet your career co-captain](#)

[Your career journey](#)

[2027 courses](#)

[Glossary](#)

[Our locations](#)

[What next & how to apply](#)

[FAQs](#)

[Meet our grads](#)

[Join us at our 2026 Open Day](#)

# Welcome to VU

Welcome to Victoria University! Studying here has been a huge part of my growth, both academically and personally.

The VU Block Model has helped me stay focused and really get into my learning, and my teachers have been genuinely supportive. That encouragement has made a big difference to my confidence and helped me feel like I belong.

A big highlight for me has been finding community at Moondani Balluk, VU's Indigenous Academic Unit. As a proud Yankunytjatjara student, it's been a place where I've felt safe, seen and supported.

Through Moondani Balluk, I've been able to take part in incredible opportunities like Indigenous conferences and sport events. Those experiences helped me discover how important connection to culture is, deepened my identity, and helped me build friendships I'll carry with me long after uni.

As you think about the next step in your journey, my advice is simple: jump into opportunities, stay curious, and don't be afraid to ask for support. Make connections, back yourself, and be proud of the story you bring with you.

At VU, your voice matters.



**Denzel**  
Law student



“As Yorta Yorta and Dja Dja Wurrung, I am honoured and proud to be a part of VU and to lead Moondani Balluk. This university is committed to Aboriginal people – our strategies, policies, and ways of working show this.

At Moondani Balluk we value deep connection to Country and Aboriginal community, and we step forward to embrace people as new students in our courses. We hold ceremony and undertake cultural practice on campus so that all Aboriginal people know they are culturally safe.

Come and join us in 2027 to celebrate who you are and who you want to be.”

**Karen Jackson**

Executive Director, Moondani Balluk  
Proud Yorta Yorta woman



**Moondani Balluk – meaning ‘Embrace People’ in the Woiwurrung language of the Wurundjeri people – is a dedicated, culturally safe place for Indigenous students and staff at VU.**

Providing pastoral care, connection and opportunities for Aboriginal and Torres Strait Islander students and staff, Moondani Balluk offer holistic support – including academic, cultural and wellbeing services – to empower our students to thrive throughout their study journey. They also lead and collaborate on Indigenous-led research in partnership with community organisations, and house the nationally significant Aboriginal History Archive.

Explore how VU supports Aboriginal and Torres Strait Islander students with scholarships, cultural connection, study support and more at: [vu.edu.au/indigenous-students](https://vu.edu.au/indigenous-students)



## Acknowledgement of Country

We acknowledge, recognise and respect the Ancestors, Elders and families of the Traditional Owners of University land where our campuses are situated. In Victoria, the Bunurong/Boonwurrung, Wadawurrung and Wurundjeri/Woiwurrung of the Kulin Nation; in Sydney, the Gadigal and Guring-gai of the Eora Nation; and in Brisbane, the Turrbal and Yugara people.

As we share our own knowledge practices within the University, we acknowledge that the land on which we meet, learn and grow is a place of age-old ceremonies of celebration, initiation and renewal. We honour the depth of wisdom held by Aboriginal communities and recognise their enduring connection to Country. Sovereignty has never been ceded.

**Front cover image:**  
Tracy, Diploma of Nursing student, pathwaying on to Bachelor of Nursing.

Welcome to VU

The VU Block Model®

No one sees you like VU

VU Early Entry

Uniquely VU

Uni, your way

Health

Education

Law

Business

Cyber Security & IT

Sport

Trades

TAFE at VU

Meet your career co-captain

Your career journey

2027 courses

Glossary

Our locations

What next & how to apply

FAQs

Meet our grads

Join us at our 2026 Open Day

# Study one subject at a time

## The VU Block Model®



▼ = up to five course entry options

**Put your life at the centre of your study – with a uni experience designed to help you stay focused, feel supported and reach your goals.**

Studying one subject at a time means you can go deeper and build real connections with teachers, classmates and industry.

### Better focus, deeper learning

Say goodbye to lectures and dive into small, collaborative, workshop-style classes where you learn by doing.

### Study that fits into life

Three-hour classes, three days a week means you'll have time to work, balance commitments and still have a life.

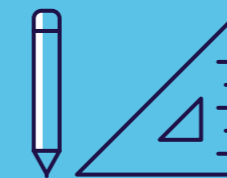
### Your voice is valued

Build connections with your teacher and classmates. Get real-time feedback on your learning and assessments.

### Uni that works for you

Fast-track your studies with optional summer or winter blocks or take a block off when you need a break.

Find out more at [vu.edu.au/block-model](https://vu.edu.au/block-model)



**1 subject every 4 weeks**



**3-hour classes, 3 days a week**



**Interactive classes, not lectures**

**“The VU Block Model was a key motivation for me to choose VU. Studying one subject at a time made it super easy to have a more balanced lifestyle and continue my usual activities and work outside of study. Deadlines are clear, and the focus is clear.”**

Selin Arpaci  
Sport Science graduate



Welcome to VU

The VU Block Model®

No one sees you like VU

VU Early Entry

Uniquely VU

Uni, your way

Health

Education

Law

Business

Cyber Security & IT

Sport

Trades

TAFE at VU

Meet your career co-captain

Your career journey

2027 courses

Glossary

Our locations

What next & how to apply

FAQs

Meet our grads

Join us at our 2026 Open Day

# No one sees you like VU

Welcome – you’ve opened the page to a uni that gets it.

We’re glad you’ve landed here, so we can show you what we’re about.

We’re not just another uni who gives you four subjects at once and no breathing room. At VU, students take on just one subject at a time with the VU Block Model, giving you space to focus, grow, and flourish on your terms.

Hands-on is our core ethos. You’ll see it in our practical TAFE courses and supported, formative placements. From real workplace hours to industry-built assessments, learning reflects the real world. We don’t just prepare you for work – we set you up to thrive in your chosen career.

We know students need their education to be flexible, supported, and built for life beyond the classroom. Your future career isn’t something we leave until the end; it’s built into every step, starting from day one.

We’re here to unlock futures and unleash talent, no matter your ATAR or history.

And we believe diversity makes every learning experience richer, deeper, better; and that your lived experience and unique voice make you who you are.

We believe in you, and your story – you’re on page one of your next chapter right now.

Let’s see where it could go together.

“I come from a very family-oriented Greek culture. Coming in to VU, I feel like I’m getting the same sort of community vibe.”

Yianni  
Sport Science student





**VICTORIA UNIVERSITY**

UNIQUELY YOU

Welcome to VU

The VU Block Model®

No one sees you like VU

VU Early Entry

Uniquely VU

Uni, your way

Health

Education

Law

Business

Cyber Security & IT

Sport

Trades

TAFE at VU

Meet your career co-captain

Your career journey

2027 courses

Glossary

Our locations

What next & how to apply

FAQs

Meet our grads

Join us at our 2026 Open Day

# VU»Early Entry

## Your future, fast-tracked

Open to Year 11 and 12 students, VU Early Entry gives you exclusive perks, priority entry to uni, and the chance to take control of your future before exams even begin.

### Apply and you'll get:

- ◆ Automatic qualification for scholarships worth up to \$5k – across academic achievement, community leadership, innovation and relocation needs.
- ◆ Five bonus ATAR points for most courses^ plus an early **Conditional Offer\***, so you're confident in your next move before you finish Year 12.
- ◆ A free ATARNotes+ subscription (valued at \$249), plus other freebies like gym passes and prizes.
- ◆ One-on-one course advice to help with VTAC preferences, courses and **pathways** (including your own Change of Preference hotline!).

### Why you should apply

Because your future deserves more than a wait-and-see. VU Early Entry means earlier clarity, exclusive support and less stress in your final school years.

[Sign up now](#)

^Additional ATAR points not given for Bachelor of Education (P-12) and Bachelor of Education (Primary).  
\*Conditional Offers are not a full course offer – you'll still need to meet all other criteria such as ATAR and study score requirements, and note: Bachelor of Education (P-12) and Bachelor of Education (Primary) are excluded.



# Uniquely VU

**Built different – because you are.**

Discover how we're redefining uni to put students first.



### One subject at a time with the VU Block Model.

Workshop-style interactive classes, and a timetable that actually fits your life. Our learning model means more focus and freedom to balance study with everything else you love doing.



### Step forward confidently with our VU First Year College.

Get support from day one with smaller classes, personalised guidance and a team that's got your back – helping you settle in, build confidence and ease into uni.



### Start anywhere and go all the way – your way.

Begin at the level that suits you and build your way forward at VU. Choose from a wide range of TAFE and undergrad courses, with clear pathways that can take you right through to postgrad study.

**#1**  
uni in Victoria for skills development (QILT Student Experience Survey, 2024)

**#6**  
globally for sports science (ShanghaiRanking, 2025)

**52.5%**  
increase in HD grades from pre-VU Block Model to now\*

**37,416**  
total work placements by VU students in 2025

**180+**  
birth countries and **320+** languages represented in our student cohort

**310,000+**  
VU alumni worldwide

\*Domestic HE unit-enrolment results (all courses), relative to 2016

**“Dedicated educators, small classes, active and engaging learning – it's how first year should be. Our staff have one goal: your success, as a student, in your discipline, and in your growth as a person.”**

Professor John Weldon  
Associate Dean Learning and Teaching, VU First Year College

- Welcome to VU
- The VU Block Model®
- No one sees you like VU
- VU Early Entry
- Uniquely VU
- Uni, your way
- Health
- Education
- Law
- Business
- Cyber Security & IT
- Sport
- Trades
- TAFE at VU
- Meet your career co-captain
- Your career journey
- 2027 courses
- Glossary
- Our locations
- What next & how to apply
- FAQs
- Meet our grads
- Join us at our 2026 Open Day

# Uni, your way



**#1**  
in  
Victoria

**Peer Engagement**

QILT Student Experience Survey 2024

“I chose VU because of its inclusion and diversity. I felt a sense of belonging and was moved by the amount of support I received from lecturers and students in the early days, when I needed it most.”

Bol  
Law/Arts graduate



Over  
**\$5m**  
provided in financial assistance each year

## Scholarships and financial support

We believe money shouldn't get in the way of your goals. Our scholarships are designed to help remove barriers to education, with opportunities including:

- ◆ Uniquely You Scholarships of up to \$10,000, supporting students across three streams: access and support, achievement and potential, and real-world career readiness
- ◆ Moondani Balluk Student Grants, for Aboriginal and Torres Strait Islander students
- ◆ Western Chances Scholarships, for Western Chances students studying at VU
- ◆ VU Early Entry Scholarships ([more info](#))

For more info and details on how to apply, head to: [vu.edu.au/scholarships](https://vu.edu.au/scholarships)

## Student life and community

Uni isn't just about classes – it's where you find your people, explore your passions, and feel at home being exactly who you are.

At VU you'll find:

- ◆ **Clubs** to join across sport, culture, identity and more
- ◆ Our **VU Kick Start** program, supporting you if you're first in your family to study
- ◆ **VU thrive\***, our award-winning active living and wellbeing program
- ◆ **Moondani Balluk – Indigenous Academic Unit**, a culturally safe space providing support for First Nations students
- ◆ **VUSU**, your student union – get involved and access support, including for LGBTIQ+ students
- ◆ **On-campus services** from childcare to osteopathy, tax to skin health

## Your uni support checklist

-  Study support for writing, time management and more with VU Learning Hub
-  Accessibility and disability support, to make study work best for you
-  Career support for goals, jobs and future planning from our Careers Team ([more info](#))
-  Money help and advice around budgeting, Centrelink, or housing
-  Student advocates to help you navigate grades, special consideration or more
-  Free counselling, for when you're feeling stressed or just need to talk
-  Free frozen meals thanks to our student volunteers and SecondBite
-  Support for every kind of student – because whoever you are, you belong here.

Want the full rundown on our support services for students?

[Find out more](#)



# Health

## Careers you could enter:

- ◆ Ambulance attendant
- ◆ Community health officer
- ◆ Dietitian
- ◆ Disability support worker
- ◆ Personal care assistant
- ◆ Physiotherapist
- ◆ Registered nurse
- ◆ Skin health practitioner
- ◆ Speech therapist

## Turn your passion for helping others into your career – and build yourself a secure future.

Study health at VU and build a secure future in Australia's fastest-growing industry. Whether you want to work in hospitals, clinics or community health, our TAFE and degree courses give you the skills, placements and support to graduate job-ready.

With high-tech simulation labs, industry placements and real-life training, our graduates are confident, job-smart and ready to lead in their fields.

Whether it's delivering compassionate nursing care, supporting recovery as a physio, or specialising in areas like dermal therapy or speech pathology – your journey starts here.

## Why study health at VU?

- ◆ Get more than industry standard work placement hours, so you graduate confidently job-ready.
- ◆ Build critical skills in simulation and learning labs that mirror real clinical environments, getting feedback in real time.
- ◆ Benefit from VU's strong network of hospitals and community health providers – both during your studies and after you graduate.



**782** total VU student placements in 2025 with Western Health, with **148** students/grads gaining employment with them.



The aged and disability carer workforce is predicted to grow by **32%** by 2034. (Jobs & Skills Australia, 2024)



Allied health saw the highest growth in health professions between 2013-2022, with a **32%** increase. (AIHW, 2024)

## Centre of Excellence in Paramedicine Quick facts

The future of emergency care starts here – Australia's first Centre of Excellence in Paramedicine at our Sunshine campus.

### What is it?

A \$20 million world-class paramedicine training and research hub, co-funded by VU and the Victorian Government.

### Where is it?

VU Sunshine, located alongside Ambulance Victoria for direct industry connection.

### When's it opening?

Late 2026 – ready to welcome over 1,500 students each year.

### Why does it matter?

We're a statewide leader in paramedicine education, with one of the largest TAFE programs in emergency healthcare and patient transport in Australia. And we're continuing to grow, with the new Centre reshaping how paramedics are trained. With immersive simulation labs, gamified learning and real-world scenarios, we're creating a future-ready, diverse emergency healthcare workforce.



Welcome to VU

The VU Block Model®

No one sees you like VU

VU Early Entry

Uniquely VU

Uni, your way

Health

Education

Law

Business

Cyber Security & IT

Sport

Trades

TAFE at VU

Meet your career co-captain

Your career journey

2027 courses

Glossary

Our locations

What next & how to apply

FAQs

Meet our grads

Join us at our 2026 Open Day

# Education

## Careers you could enter:

- ◆ Early childhood educator
- ◆ Playgroup coordinator
- ◆ Primary school teacher
- ◆ Secondary school teacher
- ◆ Student support officer
- ◆ Teacher aide
- ◆ Curriculum advisor

“The best part about my course was that there was lots of practical, collaborative learning.

Now that I’m graduating, I’m confident that I’ve got all the skills I need to step into the workforce as a teacher.”

Maneesha  
Education graduate

## From the early years to Year 12, shape futures with a VU teaching degree – including your own.

Whether you’re starting out with a Certificate or levelling up with postgrad study, education at VU opens your door to real, meaningful work.

Begin with a TAFE course and move straight into early childhood roles, supported by hands-on training, in-class support and strong demand for qualified staff. Or, get the skills to teach at any level, with our Bachelor of Education (P-12) preparing you to teach across all school years.

With teachers in high demand and childcare services expanding nationwide, there’s never been a better time to build your future in education.

## Why study education at VU?

- ◆ Get up to 103 days of placement experience so you graduate confident and classroom-ready.
- ◆ Learn to teach students from prep to Year 12 with our unique, all-in-one education degree.
- ◆ Start work sooner with Free TAFE\* early childhood courses and fast track options for eligible students.
- ◆ Strengthen your skills with purpose-built simulation facilities and on-campus early childhood services.

Click here to explore our education courses

\*Free TAFE is available to eligible students only. Free TAFE courses are tuition fee-free. Student services and materials fees still apply.



**900**  
early childhood education and care services partner with VU to host student placements.

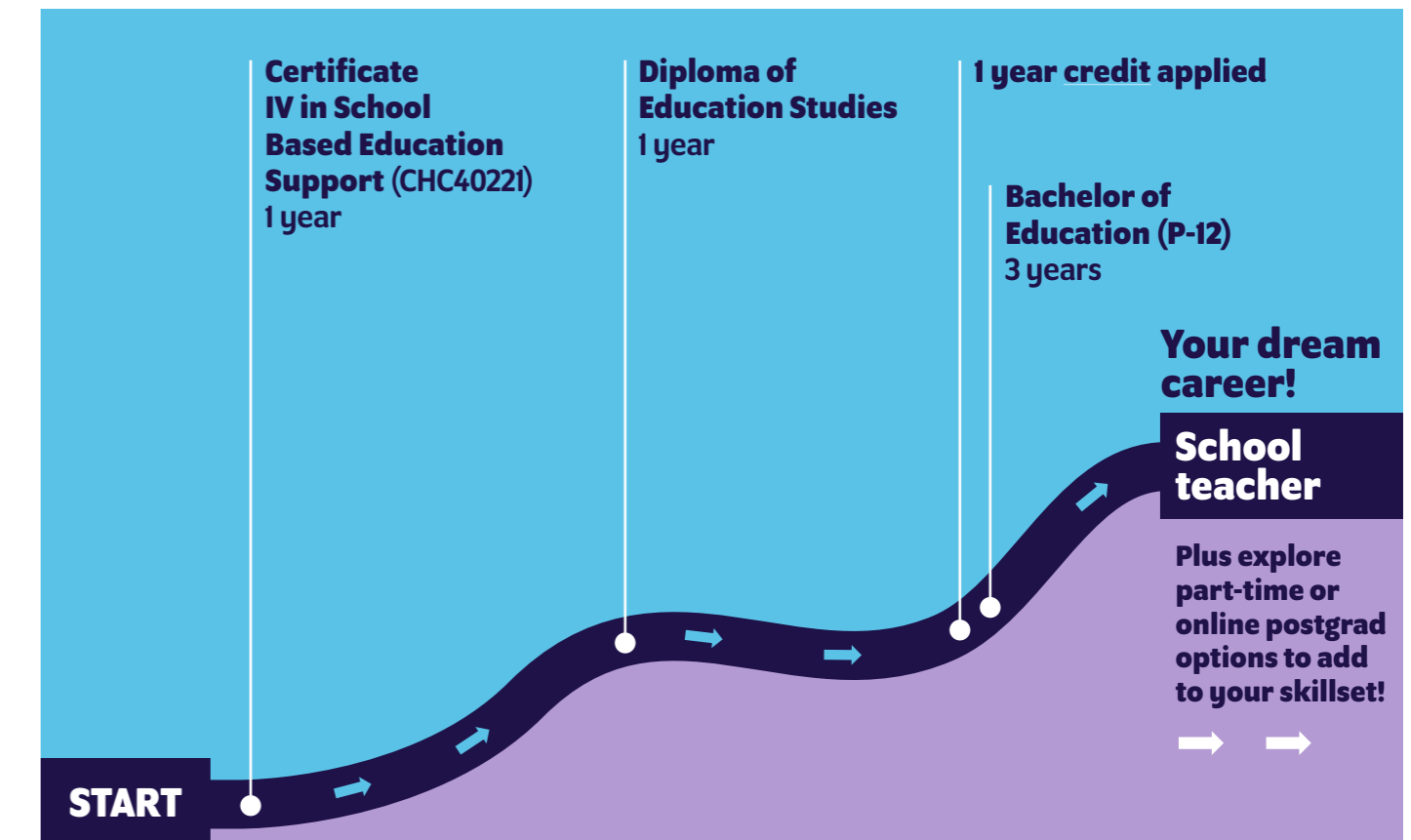


In the last 5 years, national employment of early childhood teachers grew by **55%**  
(NERO – Jobs & Skills Australia, 2025)



Education and training industry annual wage growth in past year: **+3.6%**  
(Wage Price Index, ABS 2025)

## Your potential pathway to becoming a teacher





# Law



# Business

**Careers you could enter:**

- ◆ Legal clerk
- ◆ Migration agent
- ◆ Paralegal
- ◆ Policy officer
- ◆ Solicitor



Demand for court and legal clerks has skyrocketed over the past five years – with the workforce increasing

**+87%**

(NERO – Jobs & Skills Australia, 2025)

**Did you know?**

Our one-year Graduate Diploma in Migration Law is the longest-running migration law program in Australia – enabling students to build careers that change lives.



**Turn passion into purpose: build a legal career with the confidence, skills and support to create real change.**

Develop and apply your strong critical thinking and communication skills to real cases and legal scenarios, learning how to prepare yourself for clients, courtrooms, and everything in between.

As you progress through your degree in our Law School – located in the heart of Melbourne’s legal district – you’ll have direct access to courts, our on-campus law partners, and mentors who will shape your professional journey.

**Why study law at VU?**

- ◆ Study at our city-based historic law quarters, with a specialist law library, moot court, and real-world learning at your fingertips.
- ◆ Graduate with confidence after completing 150 hours of legal placement – gaining hands-on experience in courts, legal centres and community settings.
- ◆ Study law alone or combine it with arts, criminology, business or psychology in a double degree – giving you more career scope.

**Build a business career ready for change and opportunity, in an industry that’s ready for you.**

At VU, your business course is more than theory – it’s your launchpad, whether you want to lead, innovate, or create your own business.

With flexible study, diverse course pathways, and real-world experience built in, you can shape a career that fits your goals and grows with you.

Studying in the Melbourne CBD in our purpose-built VU City Tower, you’ll be in the midst of bold ideas, new connections, and future employers.

**Why study business at VU?**

- ◆ Unlock career connections to set yourself up for success, through 110 hours of work placement.
- ◆ Tailor your business degree to your goals, with 12 majors, 19 minors, and flexible online study options.
- ◆ Start with a TAFE course and fast-track into your business undergrad degree, with clear pathways onwards to postgrad study.



**Careers you could enter:**

- ◆ Digital strategist
- ◆ Event or tourism manager
- ◆ Financial analyst
- ◆ Human resources advisor
- ◆ Project manager



Business skills are behind many of the world’s fastest-growing careers – in areas like **big data, AI, FinTech and analytics**. (World Economic Forum, Future of Jobs Report 2025)

“Our first port of call is VU students. We know that business graduates who have completed their course at VU are well prepared, and ready to experience the real world.”

Operations Manager  
Melbourne Skydeck



# Cyber Security & IT

## Careers you could enter:

- ◆ Cyber security analyst
- ◆ Digital forensics specialist
- ◆ Ethical hacker
- ◆ Network security engineer
- ◆ Security Operations Centre analyst



**5,000**  
extra cyber security workers will be required in Australia each year to avoid shortfall by 2030 (AustCyber, 2024)

### Did you know?

In 2026, we'll open the VU Datacentre Academy – right on campus and in collaboration with Microsoft. It's your chance to get hands-on training for a career in one of the world's fastest-growing tech sectors.

[Click here to explore our cyber courses](#)

## Build the skills to protect the digital world with immersive cyber security learning at VU.

In our leading on-site training centre, you'll tackle real challenges through gamified simulations and industry-led projects in a fast-growing global field.

Become part of the next generation of digital defenders, as you study a future-forward course that puts you at the frontline of cyber security innovation.

### Why study cyber at VU?

- ◆ Learn in facilities that are at the forefront of industry – our Cyber Security Training Centre.
- ◆ Start with Free TAFE, build your skills and pathway into uni-level cyber qualifications.
- ◆ Work with global leaders and graduate ready to launch into a rapidly growing sphere.

# Sport



## Be part of a global leader in sport science, where real-world training meets elite partnerships.

Train where the pros train: in our world-class Aquatic and Fitness Centre, high-tech sport science labs, environmental chambers and Australia's only Altitude Hotel.

With exclusive access to elite-level equipment and partnerships, you'll graduate prepared to lead in sport, fitness, health or high-performance environments.

### Why study sport at VU?

- ◆ Study at a uni ranked **#6 in the world** for sport science – with elite athletes and students sharing the same cutting-edge spaces.
- ◆ Study in small, supportive classes with direct access to world-class labs, gyms and training facilities.
- ◆ Contribute to groundbreaking research that's redefining sport performance, health and recovery.

[Click here to explore our sport courses](#)

## Careers you could enter:

- ◆ Exercise physiologist
- ◆ High-performance coach
- ◆ Rehabilitation specialist
- ◆ Sport scientist
- ◆ Strength & conditioning coach



In 2025, we had over **60,000** student engagements with our active living and wellbeing program, VU thrive\*.



Ranked **#6** globally for sports science (ShanghaiRanking, 2025)



# Trades

- Careers you could enter:**
- ◆ Apprentice electrician
  - ◆ Building surveyor
  - ◆ Engineering fabricator
  - ◆ Licensed plumber
  - ◆ Site supervisor



There are now **4x** as many female electrician apprentices as there were ten years ago (Jobs & Skills Australia, 2025)



The Australian building and construction sector generated **\$568b** in total income in 2022–23 (ABS, 2024)

**Become the tradie your future bosses are in need of: confident, skilled, and ready to hit the ground running.**  
Our skilled trades courses are shaped with employers, so you build the skills they're hiring for. From the construction site to the switchboard, hone the hands-on expertise that your future trade demands.  
With industry-grade tools and techniques – and learning from trained experts – whether you're starting your first apprenticeship or switching to a new career, you'll be backed by a community that helps lay the groundwork for your goals.

- Why study trades at VU?**
- ◆ Learn hands-on in our multimillion-dollar construction training centre, in scenarios matching the real life job site.
  - ◆ Train in signs and graphics at the only dedicated trade school in Victoria that offers a certification.
  - ◆ Be championed as a woman in trades at VU, through inclusive training and our partnership with Tradeswomen Australia.

**Click here to explore our trades courses**



# TAFE at VU

**Free courses, accessible pathways – and the practical know-how to take the wheel on your future.**  
With over 100 years of delivering vocational training, we know what it takes to get you job-ready. Whether you're starting out or changing direction, VU TAFE offers flexible, hands-on training that fits your life.  
No ATAR? No problem. You'll gain real-world skills, strong pathways into further study – and a launchpad to your career.

- Why study at TAFE at VU?**
- ◆ Free TAFE courses in priority industries help you build in-demand skills without the financial pressure – take your pick from over 40.
  - ◆ Start with TAFE and progress to a uni degree – your pathway, your pace.
  - ◆ Strong industry links and hands-on learning connect you with employers and job experience early on.
  - ◆ Train in modern, purpose-built spaces that reflect the tools and tech of your future workplace.
  - ◆ Smaller classes mean more support from teachers who care about your success.

**You could study while paying no tuition fees.** Check out our range of Free TAFE\* courses, with options across business, health, IT, trades and more.

[Learn more](#)

\*Free TAFE is available to eligible students only. Free TAFE courses are tuition fee-free. Student services and materials fees still apply.

- Careers you could enter:**
- ◆ Aged care support worker
  - ◆ Early childhood educator
  - ◆ Legal assistant
  - ◆ Restaurant manager
  - ◆ Youth case worker



Since 2019, more than **212,600** Victorian students have saved a total of **\$674 million** in tuition fees thanks to Free TAFE (VicGov, 2025)

**“When I graduated from my Diploma, I had a job straight away because employers know VU students have done work experience and are job ready.**

**Fatma**  
Early Childhood graduate

Welcome to VU

The VU Block Model®

No one sees you like VU

VU Early Entry

Uniquely VU

Uni, your way

Health

Education

Law

Business

Cyber Security & IT

Sport

Trades

TAFE at VU

Meet your career co-captain

Your career journey

2027 courses

Glossary

Our locations

What next & how to apply

FAQs

Meet our grads

Join us at our 2026 Open Day

# Meet your career co-captain



**37,416**  
placements completed by  
students in 2025.



**1,919**  
new partner organisations joined our  
Work Integrated Learning program in 2025.



In 2025 alone, our Careers Hub saw  
**100k+**  
Jobs Portal views.

## Get prepared for a world that's changing fast – with support to turn your practical skills into job offers.

Say goodbye to just one high school careers counsellor – at VU, you're backed by a whole network. Teachers, mentors, industry partners and our careers crew are all part of your support team, working with you to help shape your future.

## Study + industry = straight into the action

Forget lecture theatres: at VU, you'll study in purpose-built spaces where uni meets industry, and – with our partners sharing space on our campuses – you meet your potential future employers. Read more about the strong industry partnerships you'll benefit from: [vu.edu.au/partnerships](https://vu.edu.au/partnerships)

## Placements & Work Integrated Learning

Placements and Work Integrated Learning (WIL) are built into your course from the start. With thousands of industry connections across health, law, sport, education, business, trades and more, you'll graduate with real experience, strong networks, and a serious head start on your career.

## VU Careers Hub: your professional power-up

From day one, our Careers Hub gives you everything you need to boost your career. Your gateway to real opportunities, employer connections, and the tools to power your next move, our team is at the ready to turn your goals into action – and your skills into job offers.

Book in one-on-one advice, join a workshop, or get help building a standout resumé, and more. Get access to:

- ◆ Personalised career support and 1:1 advice
- ◆ Job interview coaching to help you nail that next big opportunity
- ◆ Workshops and industry panels featuring real employers
- ◆ Connections with career mentors and alumni
- ◆ Expert help building a standout resumé or portfolio.

## Explore our upgraded digital platform

Our bigger, better digital Careers Hub makes it easier than ever to connect with employers, discover real opportunities – and be seen by the people who are ready to hire.

You can tap into:

- ◆ 100,000+ jobs listed on our Jobs Portal – from part-time and casual to graduate roles
- ◆ AI-powered bespoke job feeds based on your skills, experience and goals
- ◆ Your own public profile, visible to our employer network
- ◆ The ability to explore employer profiles, view roles, tips, and upcoming events
- ◆ Opportunities and resources co-created with industry, just for VU students.

**#1**  
in  
Victoria

Skills  
Development

QILT Student Experience  
Survey 2024

“VU Careers Hub was instrumental in my journey... they helped me refine my resumé, and taught me how to articulate my skills and experiences confidently when applying for jobs.”

Vincent  
VU graduate

- Welcome to VU
- The VU Block Model®
- No one sees you like VU
- VU Early Entry
- Uniquely VU
- Uni, your way
- Health
- Education
- Law
- Business
- Cyber Security & IT
- Sport
- Trades
- TAFE at VU
- Meet your career co-captain
- Your career journey**
- 2027 courses
- Glossary
- Our locations
- What next & how to apply
- FAQs
- Meet our grads
- Join us at our 2026 Open Day

# Your career journey

From your first class, to your first job – here’s how studying at VU becomes your career launchpad.

**Did you know**

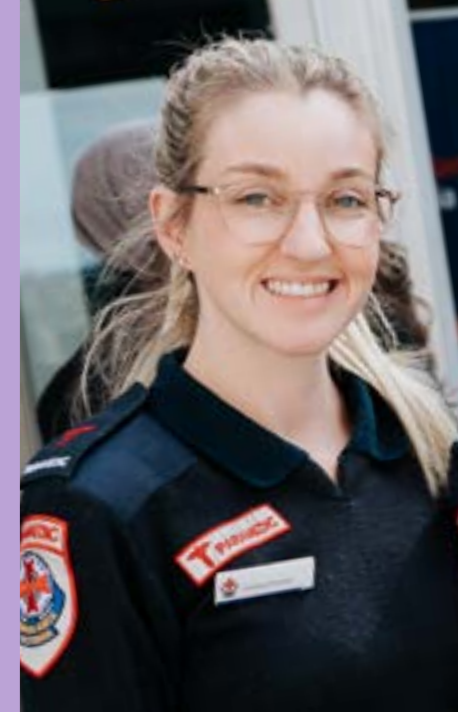
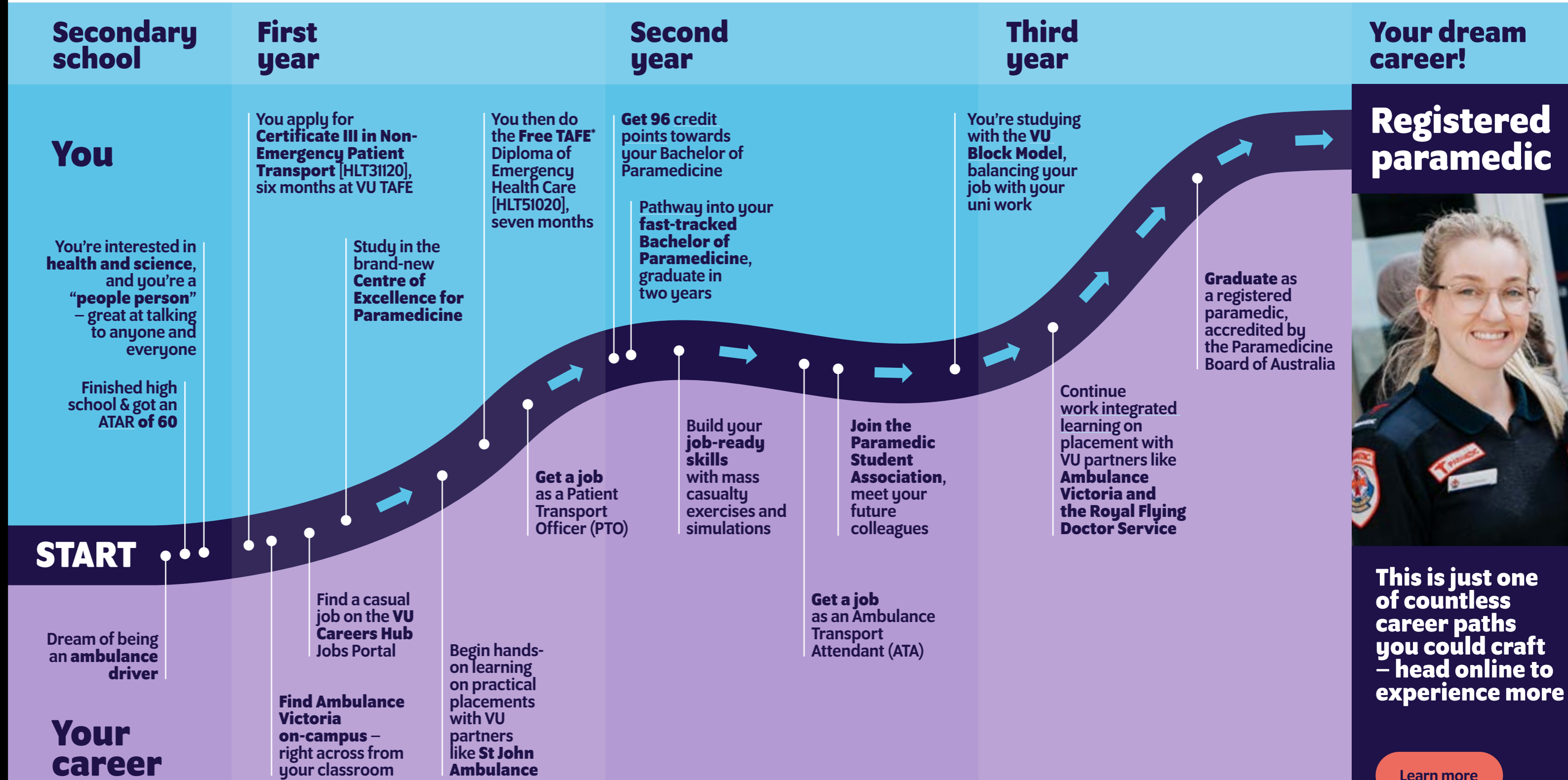
The Centre of Excellence in Paramedicine at our Sunshine campus is an Australian first – and will feature cutting-edge VR and simulation tech.

**Did you know**

Allied healthcare professionals such as ambulance officers and paramedics are in shortage in all Australian states. (Jobs & Skills Australia, 2025)



**\$113k**  
average salary for a paramedic (Seek, 2025)



**This is just one of countless career paths you could craft – head online to experience more**

[Learn more](#)

\*Free TAFE is available to eligible students only. Free TAFE courses are tuition fee-free. Student services and materials fees still apply.

Welcome to VU

The VU Block Model®

No one sees you like VU

VU Early Entry

Uniquely VU

Uni, your way

Health

Education

Law

Business

Cyber Security & IT

Sport

Trades

TAFE at VU

Meet your career co-captain

Your career journey

2027 courses

Glossary

Our locations

What next & how to apply

FAQs

Meet our grads

Join us at our 2026 Open Day

# 2027 courses



Explore our range of uni and TAFE courses and discover pathways to your future career. For full course details and admission requirements, go to [vu.edu.au](http://vu.edu.au) or scan the QR code.

## Arts & Humanities

Turn your creativity into a career with our arts and humanities courses. Build skills across communications and digital media as you learn about people, society and culture – and prepare for dynamic roles across media, arts industries, or education.

Higher Education courses	
<b>Bachelor of Arts ABAM</b>	
<b>Duration:</b> 3 years. <b>Location:</b> Footscray Park.	
<b>Other admission requirements:</b> Completion of an Australian Senior Secondary Certificate (VCE or equivalent) incl. Units 3 & 4: a study score of at least 25 in English (EAL) or 20 in any other English.	
<b>Pathway into this course from:</b>	<b>Credits</b>
Diploma of Community Services (CHCS2021)	96
Diploma of Education Studies (EDES)	96
Foundations at VU (JYAC)	0

<b>Bachelor of Applied Music ABAM</b>	
<b>Duration:</b> 3 years. <b>Location:</b> Footscray Nicholson.	
<b>Other admission requirements:</b> Completion of an Australian Senior Secondary Certificate (VCE or equivalent) incl. Units 3 & 4: a study score of at least 25 in English (EAL) or 20 in any other English. Applicants must have at least two years' experience playing an instrument/singing and provide a written statement and video – for full details see course page.	
<b>Pathway into this course from:</b>	<b>Credits</b>
*Foundations at VU (JYAC)	0

<b>Bachelor of Screen Media ABSN</b>	
<b>Duration:</b> 3 years. <b>Location:</b> Footscray Park.	
<b>Other admission requirements:</b> Completion of an Australian Senior Secondary Certificate (VCE or equivalent) incl. Units 3 & 4: a study score of at least 25 in English (EAL) or 20 in any other English.	
<b>Pathway into this course from:</b>	<b>Credits</b>
*Foundations at VU (JYAC)	0

## Biomedical & Life Sciences

Help shape the future of health with biomedicine and science at VU. Gaining hands-on lab experience and industry connections, dive into scientific or biomedical research, nutrition, or take further study pathways through health and research.

Higher Education courses	
<b>Undergraduate Certificate in Science and the Environment NUSE</b>	
<b>Duration:</b> 0.5 years. <b>Location:</b> Footscray Park.	
<b>Other admission requirements:</b> Completion of an Australian Senior Secondary Certificate (VCE or equivalent) incl. Units 3 & 4: a study score of at least 25 in English (EAL) or 20 in any other English; plus a study score of at least 20 in Mathematics (any).	

<b>Bachelor of Biomedicine HBBM</b>	
<b>Duration:</b> 3 years. <b>Location:</b> Footscray Park, St Albans. <b>ATAR required:</b> Yes.	
<b>Other admission requirements:</b> Completion of an Australian Senior Secondary Certificate (VCE or equivalent) incl. Units 3 & 4: a study score of at least 30 in English (EAL) or 25 in any other English; plus a study score of at least 25 in two of the following: Biology, Chemistry, Physics or any Mathematics.	

<b>Bachelor of Biomedical Science HBBS</b>	
<b>Duration:</b> 3 years. <b>Location:</b> St Albans.	
<b>Other admission requirements:</b> Completion of an Australian Senior Secondary Certificate (VCE or equivalent) incl. Units 3 & 4: a study score of at least 25 in English (EAL) or 20 in any other English; plus a study score of 20 of one of the following: Biology, Chemistry, Health and Human Development, any Mathematics or Physical Education.	
<b>Pathway into this course from:</b>	<b>Credits</b>
Foundations at VU (JYAC)	0

<b>Bachelor of Biomedical and Exercise Science HBES</b>	
<b>Duration:</b> 3 years. <b>Location:</b> Footscray Park, St Albans. <b>ATAR required:</b> Yes.	
<b>Other admission requirements:</b> Completion of an Australian Senior Secondary Certificate (VCE or equivalent) incl. Units 3 & 4: a study score of at least 25 in English (EAL) or 20 in any other English; plus a study score of at least 20 in two of the following: Biology, Chemistry, Health & Human Development, any Mathematics or Physical Education.	
<b>Pathway into this course from:</b>	<b>Credits</b>
Foundations at VU (JYAC)	0

# #1

in Victoria

**Peer Engagement**

---

**Skills Development**

QILT Student Experience Survey 2024

### Postgraduate courses

<b>Graduate Certificate in Digital Content Creation ATDC</b>	
<b>Duration:</b> 0.5 years. <b>Location:</b> Online.	

<b>Graduate Certificate in Digital Learning and Teaching ATDI</b>	
<b>Duration:</b> 0.5 years. <b>Location:</b> Online.	

<b>Graduate Certificate in Digital Media ATDM</b>	
<b>Duration:</b> 0.5 years. <b>Location:</b> City, Online.	

<b>Graduate Diploma in Digital Media AGDM</b>	
<b>Duration:</b> 1 year. <b>Location:</b> City.	

<b>Master of Digital Media AMDM</b>	
<b>Duration:</b> 2 years. <b>Location:</b> City.	

<b>Bachelor of Science NBSC</b>	
<b>Duration:</b> 3 years. <b>Location:</b> Footscray Park.	
<b>Other admission requirements:</b> Completion of an Australian Senior Secondary Certificate (VCE or equivalent) incl. Units 3 & 4: a study score of at least 25 in English (EAL) or 20 in any other English; plus a study score of at least 20 in Mathematics (any).	
<b>Pathway into this course from:</b>	<b>Credits</b>
Foundations at VU (JYAC)	0

<b>Bachelor of Science (Honours) HHSC</b>	
<b>Duration:</b> 1 year. <b>Location:</b> Footscray Park.	

## Business & Accounting

Kick start your career in business at VU: dive into the fast-paced worlds of commerce or events, or all things numbers in accounting. Master skills across finance, marketing, or management as you network with industry leaders, tackle real-world projects, and graduate ready to thrive in global markets.

### TAFE courses

<b>Certificate IV in Leadership and Management BSB40520</b>	
<b>Duration:</b> 1.5 years, 2 Traineeship.	
<b>Location:</b> Footscray Nicholson, Industry.	

<b>Certificate IV in Accounting and Bookkeeping FNS40222</b>	
<b>Duration:</b> 0.5 years. <b>Location:</b> Footscray Nicholson.	
<b>Pathway from this course into:</b>	<b>Credits</b>
Diploma of Accounting FNS50222	N/A

<b>Diploma of Accounting FNS50222</b>	
<b>Duration:</b> 0.5 years. <b>Location:</b> Footscray Nicholson.	
<b>Other admission requirements:</b> Must have completed the following units of competency (or equivalent):	
<ul style="list-style-type: none"> <li>Process Financial Transactions and Extract Interim Reports (FNSACC321)</li> <li>Administer Subsidiary Accounts and Ledgers (FNSACC322)</li> <li>Work Effectively in the Accounting and Bookkeeping Industry (FNSACC418)</li> <li>Prepare Financial Reports (FNSACC421) (this unit is the equivalent version of Prepare Financial Reports (BSBFIA401)).</li> </ul>	
These competencies may have been achieved through the completion of the following (or their equivalent):	
<ul style="list-style-type: none"> <li>Accounting Principles Skill Set (FNSSS00014); or</li> <li>Certificate IV in Accounting and Bookkeeping (FNS40222).</li> </ul>	
<b>Pathway from this course into:</b>	<b>Credits</b>
Bachelor of Accounting (BBAQ)	96
Bachelor of Business (BBNS)	96
<b>Pathway into this course from:</b>	<b>Credits</b>
Certificate IV in Accounting and Bookkeeping (FNS40222)	N/A

<b>Diploma of Leadership and Management BSB50420</b>	
<b>Duration:</b> 1 year. <b>Location:</b> Industry, Online.	
<b>Pathway from this course into:</b>	<b>Credits</b>
Bachelor of Business (BBNS)	96
<b>Pathway into this course from:</b>	<b>Credits</b>
Certificate IV in Accounting and Bookkeeping (FNS40222)	N/A

<b>Diploma of Project Management BSB50820</b>	
<b>Duration:</b> 1.5 years. <b>Location:</b> Online.	
<b>Pathway from this course into:</b>	<b>Credits</b>
Bachelor of Business (BBNS)	96

<b>Diploma of Business (Enterprise) VDDE</b>	
<b>Duration:</b> 1 year. <b>Location:</b> City.	
<b>Other admission requirements:</b> Completion of an Australian Senior Secondary Certificate (VCE or equivalent).	
<b>Pathway from this course into:</b>	<b>Credits</b>
Bachelor of Business (BBNS)	96
Bachelor of Accounting (BBAQ)	72
<b>Pathway into this course from:</b>	<b>Credits</b>
Foundations at VU (JYAC)	0

### Higher Education courses

<b>Diploma of Business (Enterprise) VDDE</b>	
<b>Duration:</b> 1 year. <b>Location:</b> City.	
<b>Other admission requirements:</b> Completion of an Australian Senior Secondary Certificate (VCE or equivalent).	
<b>Pathway from this course into:</b>	<b>Credits</b>
Bachelor of Business (BBNS)	96
Bachelor of Accounting (BBAQ)	72
<b>Pathway into this course from:</b>	<b>Credits</b>
Foundations at VU (JYAC)	0

<b>Undergraduate Certificate in Digital Business Skills VUDS</b>	
<b>Duration:</b> 0.5 years. <b>Location:</b> City.	
<b>Other admission requirements:</b> Completion of an Australian Senior Secondary Certificate (VCE or equivalent).	

<b>Bachelor of Accounting BBAQ</b>	
<b>Duration:</b> 3 years. <b>Location:</b> City.	
<b>Other admission requirements:</b> Completion of an Australian Senior Secondary Certificate (VCE or equivalent) incl. Units 3 & 4: a study score of at least 25 in English (EAL) or 20 in any other English.	
<b>Pathway into this course from:</b>	<b>Credits</b>
Diploma of Accounting (FNS50222)	96
Diploma of Business (Enterprise) (VDDE)	72
Foundations at VU (JYAC)	0

<b>Bachelor of Business BBNS</b>	
<b>Duration:</b> 3 years. <b>Location:</b> City, VU Online.	
<b>Other admission requirements:</b> Completion of an Australian Senior Secondary Certificate (VCE or equivalent) incl. Units 3 & 4: a study score of at least 25 in English (EAL) or 20 in any other English. Choose from the following majors: Accounting, Banking & Finance, Business Analytics, Event Management, Financial Risk Management, Human Resource Management, Information Systems Management, International Trade, Management & Innovation, Marketing, Supply Chain & Logistics Management, Tourism & Hospitality Management.	
<b>Pathway into this course from:</b>	<b>Credits</b>
Associate Degree in Hospitality and Hotel Management (VAHH)	192
Advanced Diploma of Hospitality Management (SIT60322)	144
Diploma of Accounting (FNS50222)	96
Diploma of Business (BSB50120)	96
Diploma of Business (Enterprise) (VDDE)	96
Diploma of Project Management (BSB50820)	96
Diploma of Event Management (SIT50322)	96
Diploma of Hospitality Management (SIT50422)	96
Diploma of Leadership and Management (BSB50420)	96
Diploma of Travel and Tourism Management (SIT50122)	96
Foundations at VU (JYAC)	0

<b>Bachelor of Sport Management SBSM</b>	
<b>Duration:</b> 3 years. <b>Location:</b> City.	
<b>Other admission requirements:</b> Completion of an Australian Senior Secondary Certificate (VCE or equivalent) incl. Units 3 & 4: a study score of at least 25 in English (EAL) or 20 in any other English.	
<b>Pathway into this course from:</b>	<b>Credits</b>
Diploma of Remedial Massage (HLT52021)	0
Foundations at VU (JYAC)	0

<b>Bachelor of Sport Management/ Bachelor of Business sbsb</b>	
<b>Duration:</b> 4 years. <b>Location:</b> City.	
<b>Other admission requirements:</b> Completion of an Australian Senior Secondary Certificate (VCE or equivalent) incl. Units 3 & 4: a study score of at least 25 in English (EAL) or 20 in any other English.	
<b>Pathway into this course from:</b>	<b>Credits</b>
Diploma of Business (BSB50215)	96
Diploma of Remedial Massage (HLT52021)	0
Foundations at VU (JYAC)	0

<b>Graduate Certificate in Business BTBU</b>	
<b>Duration:</b> 8 months. <b>Location:</b> VU Online.	

<b>Graduate Certificate in Business Administration BTPF</b>	
<b>Duration:</b> 0.5 years. <b>Location:</b> City, VU Online.	

<b>Graduate Certificate in Business Analytics BTBI</b>	
<b>Duration:</b> 0.5 years. <b>Location:</b> City.	

<b>Graduate Certificate in Change Management BTM</b>	
<b>Duration:</b> 8 months. <b>Location:</b> VU Online.	

<b>Graduate Certificate in Finance BTFF</b>	
<b>Duration:</b> 8 months. <b>Location:</b> VU Online.	

<b>Graduate Certificate in Financial Planning BTFP</b>	
<b>Duration:</b> 8 months. <b>Location:</b> VU Online.	

<b>Graduate Certificate in Marketing BTKM</b>	
<b>Duration:</b> 0.5 years. <b>Location:</b> City.	

<b>Graduate Certificate in Supply Chain Management BTSP</b>	
<b>Duration:</b> 0.5 years. <b>Location:</b> City.	

<b>Graduate Diploma in Business BGAB</b>	
<b>Duration:</b> 1 year. <b>Location:</b> City.	

<b>Graduate Diploma in Business Administration BGPB</b>	
<b>Duration:</b> 1 year. <b>Location:</b> City.	

<b>Graduate Diploma in Financial Planning BGFPP</b>	
<b>Duration:</b> 16 months. <b>Location:</b> VU Online.	

<b>Master of Business Administration BMBF</b>	
<b>Duration:</b> 1.5 years. <b>Location:</b> VU Online.	

<b>Master of Business Administration (Global) BMAG</b>	
<b>Duration:</b> 2 years. <b>Location:</b> City.	

<b>Master of Business Analytics BMBU</b>	
<b>Duration:</b> 2 years. <b>Location:</b> City.	

<b>Master of Financial Planning BMBP</b>	
<b>Duration:</b> 2 years. <b>Location:</b> VU Online.	

<b>Master of Marketing BMMT</b>	
<b>Duration:</b> 2 years. <b>Location:</b> City.	

<b>Master of Professional Accounting BMAQ</b>	
<b>Duration:</b> 2 years. <b>Location:</b> City.	

<b>Master of Project Management NMPM</b>	
<b>Duration:</b> 2 years. <b>Location:</b> Footscray Park.	

<b>Master of Supply Chain Management BMSU</b>	
<b>Duration:</b> 2 years. <b>Location:</b> City.	

### Short courses

<b>Commercial Law for Tax Agents Skill Set FNSS00005</b>	
<b>Duration:</b> 6 months. <b>Location:</b> Footscray Nicholson.	

<b>Tax Law for Tax Agents Skill Set (Tax documentation) FNSS00008</b>	
<b>Duration:</b> 20 weeks. <b>Location:</b> Footscray Nicholson.	

<b>BAS Agent Registration Skill Set FNSS00004</b>	
<b>Duration:</b> 20 weeks. <b>Location:</b> Footscray Nicholson.	

<b>Accounting Principles Skill Set FNSS00014</b>	
<b>Duration:</b> 20 weeks. <b>Location:</b> Footscray Nicholson.	

Welcome to VU

The VU Block Model®

No one sees you like VU

VU Early Entry

Uniquely VU

Uni, your way

Health

Education

Law

Business

Cyber Security & IT

Sport

Trades

TAFE at VU

Meet your career co-captain

Your career journey

2027 courses

Glossary

Our locations

What next & how to apply

FAQs

Meet our grads

Join us at our 2026 Open Day

## Community Services

Building hands-on expertise in youth work, social justice, or community development, you can make a difference with VU's community services courses. Graduate ready to support individuals, advocate for change, and shape stronger, more inclusive communities.

### TAFE courses

Certificate IV in Alcohol and Other Drugs CHC43215	
<b>Duration:</b> 1 year. <b>Location:</b> Footscray Nicholson.	
<b>Other admission requirements:</b> Must be at least 18 years of age or over at the commencement of the course.	
<b>Pathway from this course into:</b>	<b>Credits</b>
Certificate IV in Mental Health (CHC43315)	
Certificate IV in Youth Work (CHC40421)	
Diploma of Community Services (CHC52021)	N/A

Certificate IV in Youth Work CHC40421	
<b>Duration:</b> 1 year. <b>Location:</b> Footscray Nicholson, Sunshine, Werribee.	
<b>Other admission requirements:</b> Must be at least 18 years of age or over at the commencement of the course.	
<b>Pathway from this course into:</b>	<b>Credits</b>
Diploma of Youth Work (CHC50421)	N/A
Bachelor of Criminal Justice (ABCJ)	0
Bachelor of Criminal Justice and Psychological Studies (ABCY)	0
Bachelor of Youth Work and Criminal Justice (ABYC)	0
Bachelor of Youth Work (ABYW)	0
Bachelor of Youth Work/Bachelor of Sport Management (EBYS)	0

Diploma of Community Services CHC52021	
<b>Duration:</b> 1.5 years. <b>Location:</b> Footscray Nicholson, Werribee.	
<b>Pathway from this course into:</b>	<b>Credits</b>
Bachelor of Arts (ABAB)	96
Bachelor of Community Development (ABCD)	96
Bachelor of Criminal Justice (ABCJ)	96
Bachelor of Social Work (ABSW)***	96
Bachelor of Youth Work and Criminal Justice (ABYC)	96
Bachelor of Youth Work (ABYW)	96
Bachelor of Education Studies (EBST)	96
Bachelor of Youth Work/Bachelor of Sport Management (EBYS)	48
<b>Pathway into this course from:</b>	<b>Credits</b>
Certificate IV in Mental Health (CHC43315)	N/A

Diploma of Youth Work CHC50421	
<b>Duration:</b> 1.5 years. <b>Location:</b> Footscray Nicholson, Werribee.	
<b>Other admission requirements:</b> Must be at least 18 years of age or over at the commencement of the course.	
<b>Pathway from this course into:</b>	<b>Credits</b>
Bachelor of Criminal Justice (ABCJ)	96
Bachelor of Youth Work and Criminal Justice (ABYC)	96
Bachelor of Youth Work (ABYW)	96
Bachelor of Youth Work/Bachelor of Sport Management (EBYS)	48
Bachelor of Community Development (ABCD)	48
<b>Pathway into this course from:</b>	<b>Credits</b>
Certificate IV in Youth Work (CHC40421)	N/A

### Higher Education courses

Bachelor of Community Development ABCD	
<b>Duration:</b> 3 years. <b>Location:</b> Footscray Park.	
<b>Other admission requirements:</b> Completion of an Australian Senior Secondary Certificate (VCE or equivalent) incl. Units 3 & 4: a study score of at least 25 in English (EAL) or 20 in any other English.	
<b>Pathway into this course from:</b>	<b>Credits</b>
Diploma of Community Services (CHC52021)	96
Diploma of Youth Work (CHC50421)	48
Foundations at VU (JYAC)	0

Bachelor of Criminal Justice ABCJ	
<b>Duration:</b> 3 years. <b>Location:</b> Footscray Park.	
<b>Other admission requirements:</b> Completion of an Australian Senior Secondary Certificate (VCE or equivalent) incl. Units 3 & 4: a study score of at least 25 in English (EAL) or 20 in any other English.	
<b>Pathway into this course from:</b>	<b>Credits</b>
Certificate IV in Youth Work (CHC40421)	0
Diploma of Youth Work (CHC50421)	96
Diploma of Community Services (CHC52021)	96
Foundations at VU (JYAC)	0

Bachelor of Criminal Justice and Psychological Studies ABCY	
<b>Duration:</b> 3 years. <b>Location:</b> Footscray Park.	
<b>Other admission requirements:</b> Completion of an Australian Senior Secondary Certificate (VCE or equivalent) incl. Units 3 & 4: a study score of at least 25 in English (EAL) or 20 in any other English.	
<b>Pathway into this course from:</b>	<b>Credits</b>
Certificate IV in Youth Work (CHC40421)	0

Bachelor of Social Work ABSW	
<b>Duration:</b> 4 years. <b>Location:</b> Footscray Park.	
<b>Other admission requirements:</b> Completion of an Australian Senior Secondary Certificate (VCE or equivalent) incl. Units 3 & 4: a study score of at least 25 in English (EAL) or 20 in any other English.	
<b>Pathway into this course from:</b>	<b>Credits</b>
Diploma of Community Services (CHC52021) ***	96
Foundations at VU (JYAC) ***	0

Bachelor of Youth Work ABYW	
<b>Duration:</b> 3 years. <b>Location:</b> Footscray Park.	
<b>Other admission requirements:</b> Completion of an Australian Senior Secondary Certificate (VCE or equivalent) incl. Units 3 & 4: a study score of at least 25 in English (EAL) or 20 in any other English.	
<b>Pathway into this course from:</b>	<b>Credits</b>
Diploma of Youth Work (CHC50421)	96
Diploma of Community Services (CHC52021)	96
Certificate IV in Youth Work (CHC40421)	0
Foundations at VU (JYAC)	0

Bachelor of Youth Work and Criminal Justice ABYC	
<b>Duration:</b> 3 years. <b>Location:</b> Footscray Park.	
<b>Other admission requirements:</b> Completion of an Australian Senior Secondary Certificate (VCE or equivalent) incl. Units 3 & 4: a study score of at least 25 in English (EAL) or 20 in any other English.	
<b>Pathway into this course from:</b>	<b>Credits</b>
Diploma of Youth Work (CHC50421)	96
Diploma of Community Services (CHC52021)	96
Certificate IV in Youth Work (CHC40421)	0
Foundations at VU (JYAC)	0

Bachelor of Youth Work/Bachelor of Sport Management EBYS	
<b>Duration:</b> 4 years. <b>Location:</b> Footscray Park.	
<b>Other admission requirements:</b> Completion of an Australian Senior Secondary Certificate (VCE or equivalent) incl. Units 3 & 4: a study score of at least 25 in English (EAL) or 20 in any other English.	
<b>Pathway into this course from:</b>	<b>Credits</b>
Diploma of Youth Work (CHC50421)	48
Diploma of Community Services (CHC52021)	48
Certificate IV in Youth Work (CHC40421)	0

### Postgraduate courses

Graduate Certificate in International Community Development ATID	
<b>Duration:</b> 0.5 years. <b>Location:</b> City, Footscray Park.	

Graduate Diploma in International Community Development AGID	
<b>Duration:</b> 1 year. <b>Location:</b> City, Footscray Park.	

Master of International Community Development AMCD	
<b>Duration:</b> 2 years. <b>Location:</b> City.	

### Short courses

Alcohol and Other Drugs Skill Set CHCSS00093	
<b>Duration:</b> 15 weeks. <b>Location:</b> Online.	

Course in Identifying and Responding to Family Violence Risk 22660VIC	
<b>Duration:</b> 10 weeks. <b>Location:</b> Online.	

## Cyber Security & IT

Secure your future in tech's most in-demand fields – from cyber security and AI, to data analytics and software development. At VU, you'll learn by doing, gaining practical experience with industry partners to become a leader in the evolving digital landscape.

### TAFE courses

Certificate III in Information Technology ICT30120	
<b>Duration:</b> 0.5 years. <b>Location:</b> Footscray Nicholson, Online, St Albans, Werribee.	
<b>Pathway from this course into:</b>	<b>Credits</b>
Certificate IV in Information Technology (ICT40120)	N/A
Certificate IV in Cyber Security (22603VIC)	N/A

Certificate IV in Cyber Security 22603VIC	
<b>Duration:</b> 1 year. <b>Location:</b> St Albans, Online, Footscray Nicholson, Sunshine, Werribee.	
<b>Pathway from this course into:</b>	<b>Credits</b>
Diploma of Cyber Security (VDCS)	48
Bachelor of Cyber Security (NBCS)	24
Bachelor of Data Science (NBDS)	24
Bachelor of Information Technology (NBIT)	24

Certificate IV in Information Technology ICT40120	
<b>Duration:</b> 1 year. <b>Location:</b> Footscray Nicholson.	
<b>Pathway from this course into:</b>	<b>Credits</b>
Bachelor of Cyber Security (NBCS)	24
Bachelor of Data Science (NBDS)	24
Bachelor of Information Technology (NBIT)	24

### Higher Education courses

Diploma of Cyber Security VDCS	
<b>Duration:</b> 1 year. <b>Location:</b> Footscray Nicholson.	
<b>Other admission requirements:</b> Successful completion of an Australian Senior Secondary Certificate (VCE or equivalent).	
<b>Pathway from this course into:</b>	<b>Credits</b>
Bachelor of Cyber Security (NBCS)	96
<b>Pathway into this course from:</b>	<b>Credits</b>
Certificate IV in Cyber Security (22603VIC)	48

Diploma of Information Technology VDIR	
<b>Duration:</b> 1 year. <b>Location:</b> Footscray Nicholson.	
<b>Other admission requirements:</b> Successful completion of an Australian Senior Secondary Certificate (VCE or equivalent).	
<b>Pathway from this course into:</b>	<b>Credits</b>
Bachelor of Cyber Security (NBCS)	96
Bachelor of Data Science (NBDS)	96
Bachelor of Information Technology (NBIT)	96
Bachelor of Information Technology (Professional) (NBIP) **	96
<b>Pathway into this course from:</b>	<b>Credits</b>
Foundations at VU (JYAC)	0

## Education

Inspire the next generation and prepare for diverse careers in teaching and education at VU. Learning practical skills to enter early childhood, primary, or secondary settings, you'll graduate ready for the classroom – and to empower future learners.

### TAFE courses

Certificate III in Early Childhood Education and Care CHC30121	
<b>Duration:</b> 1 year + up to 2 years Traineeship, 2 years VDSS. <b>Location:</b> Footscray Nicholson, Werribee, St Albans, Industry.	
<b>Pathway from this course into:</b>	<b>Credits</b>
Diploma of Early Childhood Education and Care (CHC50121)	N/A

Undergraduate Certificate in Information Technology NUIT	
<b>Duration:</b> 0.5 years. <b>Location:</b> Footscray Park.	
<b>Other admission requirements:</b> Completion of an Australian Senior Secondary Certificate (VCE or equivalent) incl. Units 3 & 4: a study score of at least 25 in English (EAL) or 20 in any other English; plus a study score of at least 20 in Mathematics (any).	

Undergraduate Certificate in Web Development and Programming vuwd	
<b>Duration:</b> 0.5 years. <b>Location:</b> Footscray Nicholson.	
<b>Other admission requirements:</b> Successful completion of an Australian Senior Secondary Certificate (VCE or equivalent).	

Bachelor of Cyber Security NBCS	
<b>Duration:</b> 3 years. <b>Location:</b> Footscray Park.	
<b>Other admission requirements:</b> Completion of an Australian Senior Secondary Certificate (VCE or equivalent) incl. Units 3 & 4: a study score of at least 25 in English (EAL) or 20 in any other English; plus a study score of at least 20 in Mathematics (any).	
<b>Pathway into this course from:</b>	<b>Credits</b>
Diploma of Information Technology (VDIT)	96
Diploma of Cyber Security (VDCS)	96
Certificate IV in Cyber Security (22603VIC)	24
Certificate IV in Information Technology (ICT40120)	24

Bachelor of Data Science NBDS	
<b>Duration:</b> 3 years. <b>Location:</b> Footscray Park.	
<b>Other admission requirements:</b> Completion of an Australian Senior Secondary Certificate (VCE or equivalent) incl. Units 3 & 4: a study score of at least 25 in English (EAL) or 20 in any other English; plus a study score of at least 20 in Mathematics (any).	
<b>Pathway into this course from:</b>	<b>Credits</b>
Diploma of Information Technology (VDIT)	96
Certificate IV in Cyber Security (22603VIC)	24
Certificate IV in Information Technology (ICT40120)	24
Diploma of Clinical Coding (HLT50321)	0

Bachelor of Information Technology (Professional) NBIP	
<b>Duration:</b> 2.5 years + 1 year industry internship. <b>Location:</b> Footscray Park. <b>ATAR required:</b> Yes.	
<b>Other admission requirements:</b> Completion of an Australian Senior Secondary Certificate (VCE or equivalent) incl. Units 3 & 4: a study score of at least 25 in English (EAL) or 20 in any other English; plus a study score of at least 20 in Mathematics (any).	
<b>Pathway into this course from:</b>	<b>Credits</b>
Diploma of Information Technology (VDIT) **	96

### Did you know?

Our new VU Datacentre Academy courses are offered in collaboration with Microsoft – giving you direct contact with one of the global tech giants! For more info, visit [vu.edu.au/datacentre-academy](http://vu.edu.au/datacentre-academy)

Bachelor of Information Technology NBIT	
<b>Duration:</b> 3 years. <b>Location:</b> Footscray Park.	
<b>Other admission requirements:</b> Completion of an Australian Senior Secondary Certificate (VCE or equivalent) incl. Units 3 & 4: a study score of at least 25 in English (EAL) or 20 in any other English; plus a study score of at least 20 in Mathematics (any).	
<b>Pathway into this course from:</b>	<b>Credits</b>
Diploma of Information Technology (VDIT)	96
Certificate IV in Cyber Security (22603VIC)	24
Certificate IV in Information Technology (ICT40120)	24

Postgraduate courses	
Graduate Certificate in Artificial Intelligence NTAI	
<b>Duration:</b> 0.5 years. <b>Location:</b> City, Footscray Park.	

Graduate Certificate in Cyber Security NTCS	
<b>Duration:</b> 0.5 years. <b>Location:</b> City, Footscray Park.	

Graduate Diploma in Cyber Security NGCS	
<b>Duration:</b> 1 year. <b>Location:</b> City, Footscray Park.	

Master of Applied Information Technology NMIT	
<b>Duration:</b> 2 years. <b>Location:</b> City, Footscray Park.	

Certificate IV in Training and Assessment TAE40122	
<b>Duration:</b> 0.5 years. <b>Location:</b> City, Footscray Nicholson, Online.	

### Welcome to VU

### The VU Block Model®

### No one sees you like VU

### VU Early Entry

### Uniquely VU

### Uni, your way

### Health

### Education

### Law

### Business

### Cyber Security & IT

### Sport

### Trades

### TAFE at VU

### Meet your career co-captain

### Your career journey

### 2027 courses

### Glossary

### Our locations

### What next & how to apply

### FAQs

### Meet our grads

### Join us at our 2026 Open Day

<b>Diploma of Early Childhood Education and Care</b> CHC50121	
<b>Duration:</b> 1 year + up to 2 years Traineeship.	
<b>Location:</b> Footscray Nicholson, St Albans, Werribee, Industry.	
<b>Other admission requirements:</b> Entry to this qualification is open to individuals who hold a:	
<ul style="list-style-type: none"> <li>Certificate III in Early Childhood Education and Care (CHC30121); or</li> <li>Certificate III in Early Childhood Education and Care (CHC30113).</li> </ul>	
<b>Pathway from this course into:</b>	<b>Credits</b>
Bachelor of Early Childhood Education (EBEC)	96
Bachelor of Early Childhood Education and Leadership (EBCL)	96
<b>Pathway into this course from:</b>	<b>Credits</b>
Certificate III in Early Childhood Education and Care (CHC30121)	N/A

<b>Diploma of Teacher Education Preparation</b> 22602VIC	
<b>Duration:</b> 1 year. <b>Location:</b> Footscray Park.	
<b>Pathway from this course into:</b>	<b>Credits</b>
Bachelor of Early Childhood Education and Leadership (EBCL)	24
Bachelor of Early Childhood Education (EBEC)	24
Bachelor of Education Studies (EBST)	24
Bachelor of Education (P-12) (EBED)	0
Bachelor of Education (Primary) (EBPE)	0
<b>Pathway into this course from:</b>	<b>Credits</b>
Certificate IV in Tertiary Preparation (22582VIC)	N/A

<b>Diploma of Education Studies</b> EDES	
<b>Duration:</b> 1 year. <b>Location:</b> Footscray Nicholson, Online.	
<b>Other admission requirements:</b> Completion of an Australian Senior Secondary Certificate (VCE or equivalent) incl. Units 3 & 4: a study score of at least 25 in English (EAL) or 20 in any other English.	
<b>Pathway from this course into:</b>	<b>Credits</b>
Bachelor of Arts (ABAB)	96
Bachelor of Early Childhood Education and Leadership (EBCL)	96
Bachelor of Early Childhood Education (EBEC)	96
Bachelor of Education (P-12) (EBED) */**	96
Bachelor of Education (Primary) (EBPE) */**	96
Bachelor of Education Studies (EBST)	96
<b>Pathway into this course from:</b>	<b>Credits</b>
Certificate IV in School Based Education Support (CHC40221)	0
Foundations at VU (JYAC)	0

<b>Undergraduate Certificate in Education (P12 STEM)</b> EUED	
<b>Duration:</b> 0.5 years. <b>Location:</b> Footscray Park, Online.	
<b>Other admission requirements:</b> Completion of an Australian Senior Secondary Certificate (VCE or equivalent) incl. Units 3 & 4: a study score of at least 30 in English (EAL) or 25 in any other English.	

<b>Undergraduate Certificate in Education Studies</b> EUES	
<b>Duration:</b> 0.5 years. <b>Location:</b> Footscray Park.	
<b>Other admission requirements:</b> Completion of an Australian Senior Secondary Certificate (VCE or equivalent) incl. Units 3 & 4: a study score of at least 30 in English (EAL) or 25 in any other English.	

<b>Bachelor of Early Childhood Education and Leadership</b> EBCL	
<b>Duration:</b> 4 years. <b>Location:</b> City, Footscray Nicholson, Online.	
<b>Other admission requirements:</b> Completion of an Australian Senior Secondary Certificate (VCE or equivalent) incl. Units 3 & 4: a study score of at least 30 in English (EAL) or 25 in any other English.	
<b>Pathway into this course from:</b>	<b>Credits</b>
Diploma of Early Childhood Education and Care (CHC50121)	96
Diploma of Education Studies (EDES)	96
Diploma of Teacher Education Preparation (22602VIC)	24

<b>Bachelor of Early Childhood Education</b> EBEC	
<b>Duration:</b> 3 years. <b>Location:</b> City, Footscray Nicholson, Online.	
<b>Other admission requirements:</b> Completion of an Australian Senior Secondary Certificate (VCE or equivalent) incl. Units 3 & 4: a study score of at least 30 in English (EAL) or 25 in any other English.	
<b>Pathway into this course from:</b>	<b>Credits</b>
Diploma of Early Childhood Education and Care (CHC50121)	96
Diploma of Education Studies (EDES)	96
Diploma of Teacher Education Preparation (22602VIC)	24

<b>Bachelor of Education (P-12)</b> EBED	
<b>Duration:</b> 4 years. <b>Location:</b> Footscray Park.	
<b>ATAR required:</b> Yes.	
<b>Other admission requirements:</b> Completion of an Australian Senior Secondary Certificate (VCE or equivalent) with an ATAR of 70 or above (after adjustments) incl. Units 3 & 4: a study score of at least 30 in English (EAL) or 25 in any other English other than EAL; plus Units 1 & 2: satisfactory completion in two Units (any study combination) of Maths: General Mathematics, Maths: Mathematical Methods or Maths: Specialist Mathematics or Units 3 & 4: any Mathematics.	
<b>Pathway into this course from:</b>	<b>Credits</b>
Diploma of Education Studies (EDES) */**	96
Diploma of Teacher Education Preparation (22602VIC)	0

<b>Bachelor of Education (Primary)</b> EBPE	
<b>Duration:</b> 4 years. <b>Location:</b> Footscray Park, VU Online. <b>ATAR required:</b> Yes.	
<b>Other admission requirements:</b> Completion of an Australian Senior Secondary Certificate (VCE or equivalent) with an ATAR of 71.6 or above (after adjustments) incl. Units 3 & 4: a study score of at least 30 in English (EAL) or 25 in any other English other than EAL; plus Units 1 & 2: satisfactory completion in two Units (any study combination) of Maths: General Mathematics, Maths: Mathematical Methods or Maths: Specialist Mathematics or Units 3 & 4: any Mathematics.	
<b>Pathway into this course from:</b>	<b>Credits</b>
Diploma of Education Studies (EDES) */**	96
Diploma of Teacher Education Preparation (22602VIC)	0

<b>Bachelor of Education Studies</b> EBST	
<b>Duration:</b> 3 years. <b>Location:</b> Footscray Park.	
<b>Other admission requirements:</b> Completion of an Australian Senior Secondary Certificate (VCE or equivalent) incl. Units 3 & 4: a study score of at least 30 in English (EAL) or 25 in any other English.	
<b>Pathway into this course from:</b>	<b>Credits</b>
Diploma of Community Services (CHC52021)	96
Diploma of Education Studies (EDES)	96
Diploma of Teacher Education Preparation (22602VIC)	24

<b>Bachelor of Outdoor Education and Environmental Science</b> SBOE	
<b>Duration:</b> 3 years. <b>Location:</b> Footscray Park.	
<b>Other admission requirements:</b> Completion of an Australian Senior Secondary Certificate (VCE or equivalent) incl. Units 3 & 4: a study score of at least 25 in English (EAL) or 20 in any other English.	

<b>Bachelor of Outdoor Leadership</b> SBOL	
<b>Duration:</b> 3 years. <b>Location:</b> Footscray Park.	
<b>Other admission requirements:</b> Completion of an Australian Senior Secondary Certificate (VCE or equivalent) incl. Units 3 & 4: a study score of at least 25 in English (EAL) or 20 in any other English.	
<b>Pathway into this course from:</b>	<b>Credits</b>
Foundations at VU (JYAC)	0

<b>Bachelor of Science/Master of Teaching (Secondary Education)</b> ECST	
<b>Duration:</b> 5 years. <b>Location:</b> Footscray Park.	
<b>Other admission requirements:</b> Completion of an Australian Senior Secondary Certificate (VCE or equivalent) incl. Units 3 & 4: a study score of at least 25 in English (EAL) or 20 in any other English; plus a study score of at least 20 in Mathematics (any).	

<b>Graduate Certificate in Block Teaching</b> ETBL	
<b>Duration:</b> 0.5 years. <b>Location:</b> Footscray Park, Online.	

<b>Graduate Certificate in Early Childhood Education</b> ETEC	
<b>Duration:</b> 0.5 years. <b>Location:</b> City, Online.	
<b>Pathway from this course into:</b>	<b>Credits</b>
Master of Education (EMED)	48

<b>Graduate Certificate in Education</b> ETED	
<b>Duration:</b> 0.5 years. <b>Location:</b> Footscray Park.	

<b>Graduate Diploma in Block Teaching</b> EGBL	
<b>Duration:</b> 1 year. <b>Location:</b> Footscray Park, Online.	

<b>Graduate Diploma in Early Childhood Education</b> EGEC	
<b>Duration:</b> 1 year. <b>Location:</b> City, Online.	
<b>Pathway from this course into:</b>	<b>Credits</b>
Master of Education (EMED)	96

<b>Graduate Diploma in Education</b> EGED	
<b>Duration:</b> 1 year. <b>Location:</b> Footscray Park.	

<b>Master of Applied Teaching (Secondary Education)</b> EMAT	
<b>Duration:</b> 1.5 years. <b>Location:</b> Online.	
<b>Other admission requirements:</b> To be eligible applicants must be an Australian citizen or permanent resident from an Indigenous Australian, culturally and linguistically diverse (CALD) or African Australian background. All applicants are required to respond to questions on the A141 form outlining why they are interested in undertaking this course as well as providing a written response about which of the eligible identity categories they belong to: Indigenous Australian, CALD or African Australian. If applicants are eligible, their undergraduate and relevant post-graduate degrees are assessed to ensure they have at least one specialisation area which they are able to teach. They are then offered an ANAA interview prior to admission to assess their suitability for the intense and competitive program. This is regardless of whether they have completed a CASPer test or not.	

<b>Master of Education</b> EMED	
<b>Duration:</b> 2 years. <b>Location:</b> Footscray Park.	
<b>Pathway into this course from:</b>	<b>Credits</b>
Graduate Diploma in Early Childhood Education (EGEC)	96
Graduate Certificate in Early Childhood Education (ETEC)	48

<b>Master of Teaching (Primary Education)</b> EMPE	
<b>Duration:</b> 2 years. <b>Location:</b> Footscray Nicholson, VU Online.	
<b>Other admission requirements:</b> All students need to pass a CASPer test or VU ANAA interview prior to admission. All students need a 3.5 GPA average for entry into the course.	

## Engineering & Built Environment

Design the future with VU's engineering & built environment courses. Gaining skills in construction, surveying and design, you'll graduate prepared for careers from project management through to design – and ready to shape cities and industries.

### TAFE courses

<b>Diploma of Building and Construction (Building)</b> CPC50220	
<b>Duration:</b> 2 years. <b>Location:</b> Sunshine, Online.	
<b>Pathway from this course into:</b>	<b>Credits</b>
Bachelor of Construction Management (Honours) (NHCM)	144
Bachelor of Architectural Design (NBAD)	96
Bachelor of Building Surveying (NBBS)	96
Advanced Diploma of Building Design (Architectural) (22627VIC)	N/A
Advanced Diploma of Building Surveying (CPC60121)	N/A
<b>Pathway into this course from:</b>	<b>Credits</b>
Certificate II in Building and Construction Pre-apprenticeship (22614VIC)	N/A
Certificate III in Bricklaying and Blocklaying (CPC33020)	N/A
Certificate III in Cabinet Making and Timber Technology (MSF30322)	N/A
Certificate III in Carpentry (CPC30220)	N/A

<b>Advanced Diploma of Building Design (Architectural)</b> 22627VIC	
<b>Duration:</b> 2 years. <b>Location:</b> Sunshine, Online.	
<b>Pathway from this course into:</b>	<b>Credits</b>
Bachelor of Architectural Design (NBAD)	144
Bachelor of Construction Management (Honours) (NHCM)	120
Bachelor of Building Surveying (NBBS)	96
<b>Pathway into this course from:</b>	<b>Credits</b>
Diploma of Building and Construction (Building) (CPC50220)	N/A

<b>Advanced Diploma of Building Surveying</b> CPC60121	
<b>Duration:</b> 2 years. <b>Location:</b> Sunshine.	
<b>Pathway from this course into:</b>	<b>Credits</b>
Bachelor of Building Surveying (NBBS)	96
Bachelor of Architectural Design (NBAD)	96
Bachelor of Construction Management (Honours) (NHCM)	96
<b>Pathway into this course from:</b>	<b>Credits</b>
Diploma of Building and Construction (Building) (CPC50220)	N/A
Certificate III in Carpentry (CPC30220)	N/A

## Want to study 100% online?

Check out our online, flexible postgraduate courses in business, education and health.

[Learn more](#)

<b>Master of Teaching (Secondary Education)</b> EMES	
<b>Duration:</b> 2 years. <b>Location:</b> City, VU Online.	
<b>Other admission requirements:</b> All students need to pass a CASPer test or VU ANAA interview prior to admission. All students need a 3.5 GPA average for entry into the course.	

<b>Undergraduate Certificate in Building Construction Management</b> NUBC	
<b>Duration:</b> 0.5 years. <b>Location:</b> Footscray Park.	
<b>Other admission requirements:</b> Completion of an Australian Senior Secondary Certificate (VCE or equivalent) incl. Units 3 & 4: a study score of at least 25 in English (EAL) or 20 in any other English.	

<b>Undergraduate Certificate in Engineering Fundamentals</b> NUEF	
<b>Duration:</b> 0.5 years. <b>Location:</b> Footscray Park.	
<b>Other admission requirements:</b> Completion of an Australian Senior Secondary Certificate (VCE or equivalent) incl. Units 3 & 4: a study score of at least 25 in English (EAL) or 20 in any other English; plus Units 3 & 4 with a study score of 20 in Mathematics (any).	

<b>Bachelor of Architectural Design</b> NBAD	
<b>Duration:</b> 3 years. <b>Location:</b> Footscray Park.	
<b>Other admission requirements:</b> Completion of an Australian Senior Secondary Certificate (VCE or equivalent) incl. Units 3 & 4: a study score of at least 25 in English (EAL) or 20 in any other English; plus any Maths Units 1 & 2 except Foundation Maths or Foundation Maths Unit 3 or 4 with a study score of 20.	
<b>Pathway into this course from:</b>	<b>Credits</b>
Advanced Diploma of Building Design (Architectural) (22627VIC)	144
Advanced Diploma of Building Surveying (CPC60121)	96
Diploma of Building and Construction (Building) (CPC50220)	96
Foundations at VU (JYAC)	0

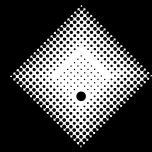
<b>Bachelor of Building Surveying</b> NBBS	
<b>Duration:</b> 3 years. <b>Location:</b> Online.	
<b>Other admission requirements:</b> Completion of an Australian Senior Secondary Certificate (VCE or equivalent) incl. Units 3 & 4: a study score of at least 25 in English (EAL) or 20 in any other English.	
<b>Pathway into this course from:</b>	<b>Credits</b>
Advanced Diploma of Building Design (Architectural) (22627VIC)	96
Advanced Diploma of Building Surveying (CPC60121)	96
Diploma of Building and Construction (Building) (CPC50220)	96
Foundations at VU (JYAC)	0

<b>Bachelor of Engineering (Honours) (Electrical and Electronic Engineering)</b> NHEE	
<b>Duration:</b> 4 years. <b>Location:</b> Footscray Park.	
<b>Other admission requirements:</b> Completion of an Australian Senior Secondary Certificate (VCE or equivalent) incl. Units 3 & 4: a study score of at least 25 in English (EAL) or 20 in any other English; plus Units 3 & 4 with a study score of 20 in Mathematics (any).	
<b>Pathway into this course from:</b>	<b>Credits</b>
Foundations at VU (JYAC)	0

<b>Bachelor of Engineering (Honours) (Mechanical Engineering)</b> NHEM	
<b>Duration:</b> 4 years. <b>Location:</b> Footscray Park.	
<b>Other admission requirements:</b> Completion of an Australian Senior Secondary Certificate (VCE or equivalent) incl. Units 3 & 4: a study score of at least 25 in English (EAL) or 20 in any other English; plus Units 3 & 4 with a study score of 20 in Mathematics (any).	
<b>Pathway into this course from:</b>	<b>Credits</b>
Foundations at VU (JYAC)	0

### Short courses

<b>Course in Safe Use of Machinery for Technology Teaching</b> 22623VIC	
<b>Duration:</b> 4 days. <b>Location:</b> Sunshine.	



# VICTORIA UNIVERSITY

## UNIQUELY YOU

Welcome to VU

The VU Block Model®

No one sees you like VU

VU Early Entry

Uniquely VU

Uni, your way

Health

Education

Law

Business

Cyber Security & IT

Sport

Trades

TAFE at VU

Meet your career co-captain

Your career journey

2027 courses

Glossary

Our locations

What next & how to apply

FAQs

Meet our grads

Join us at our 2026 Open Day

### Postgraduate courses

**Graduate Certificate in Building Surveying NTBS**  
**Duration:** 0.5 years. **Location:** Online.

**Graduate Certificate in Construction Management NTCM**  
**Duration:** 0.5 years. **Location:** Footscray Park.

**Graduate Certificate in Construction Project Management NTCP**  
**Duration:** 0.5 years. **Location:** Footscray Park.

**Graduate Certificate in Digital Construction Management NTDC**  
**Duration:** 1 year. **Location:** Footscray Park.

**Graduate Certificate in Information Technology Project Management NTIP**  
**Duration:** 0.5 years. **Location:** Footscray Park, Sydney.

**Graduate Certificate in Performance-Based Building & Fire Codes ETQB**  
**Duration:** 1 year. **Location:** Online.  
**Other admission requirements:** A letter of recommendation and an interview may be required.

**Graduate Certificate in Project Management NTPM**  
**Duration:** 0.5 years. **Location:** Footscray Park.

**Graduate Certificate in Sustainable Construction Management NTSC**  
**Duration:** 1 year. **Location:** Footscray Park.

**Graduate Diploma in Building Surveying NGBS**  
**Duration:** 1 year. **Location:** Online.

**Graduate Diploma in Construction Management NGCM**  
**Duration:** 1 year. **Location:** Footscray Park.

**Graduate Diploma in Project Management NGPM**  
**Duration:** 1 year. **Location:** Footscray Park.

**Master of Construction Management NMCM**  
**Duration:** 2 years. **Location:** Footscray Park.

**Master of Engineering NMEN**  
**Duration:** 2 years. **Location:** Footscray Park.  
**Other admission requirements:** Applicants with an engineering degree outside the specialisations listed and with five years of work experience in a relevant discipline will be eligible to submit an application for this course.

**Certificate I in Work Education 22706VIC**  
**Duration:** 1 year. **Location:** Footscray Nicholson, St Albans.  
**Other admission requirements:** Entry to the Certificate I in Work Education (22566VIC) is intended for post-compulsory school-age learners with evidence of permanent cognitive and/or intellectual disability. Evidence of permanent cognitive and/or intellectual disability could include but is not limited to:

- Formal assessment by a registered medical practitioner
- Doctors'/specialist reports
- Attendance at a Specialist School
- Integration support at school
- Integration support at school with modified curriculum

**Pathway from this course into:** Certificate II in Work Education (22631VIC) **Credits** N/A

**Pathway into this course from:** Certificate I in Work Education (22566VIC) **Credits** N/A

**Certificate II in Work Education 22631VIC**  
**Duration:** 1 year. **Location:** Footscray Nicholson.  
**Other admission requirements:** Entry to the Certificate II in Work Education (22631VIC) is intended for post-compulsory school-age learners with evidence of a permanent cognitive and/or intellectual disability. Evidence of permanent cognitive and/or intellectual disability could include but is not limited to:

- Formal assessment by a registered medical practitioner
- Doctors'/specialist reports
- Attendance at a Specialist School/ SDS
- Integration support at school
- Integration support at school with modified curriculum.

**Certificate IV in Tertiary Preparation 22582VIC**  
**Duration:** 0.5 years. **Location:** Footscray Park.  
**Pathway from this course into:** Various TAFE or Higher Education courses. Please refer to the VU website for full list of pathway options.

## English Language & Preparation Studies

Start strong with VU's preparation and English language courses. Build the skills you need for further study, work or daily life, with flexible programs and supportive teachers who help you grow in confidence.

### Foundation courses

**Foundations at VU JYAC**  
**Duration:** 16 weeks. **Location:** City, Footscray Park.  
**Admission requirements:** Have attempted an Australian Year 12 (or equivalent) program of study and have successfully completed an Australian Year 11 or a comparable educational level.  
**Pathway from this course into:** Please refer to the VU website for full list of pathway options.

**Course in Initial EAL 22636VIC**  
**Duration:** 0.5 years. **Location:** Sunshine, Footscray Nicholson, Werribee, St Albans.

**Course in EAL 22637VIC**  
**Duration:** 0.5 years. **Location:** Sunshine, Footscray Nicholson, Werribee, St Albans.

### TAFE courses

**Certificate I in EAL (Access) 22638VIC**  
**Duration:** 0.5 years. **Location:** Sunshine, Footscray Nicholson, Werribee, St Albans.

**Certificate II in EAL (Access) 22639VIC**  
**Duration:** 0.5 years. **Location:** Sunshine, Footscray Nicholson, Werribee, St Albans.

**Certificate III in EAL (Access) 22640VIC**  
**Duration:** 0.5 years. **Location:** Sunshine, Footscray Nicholson, Werribee, St Albans.

**Certificate IV in EAL (Access) 22641VIC**  
**Duration:** 0.5 years. **Location:** Sunshine, Footscray Nicholson, Werribee, St Albans.

**Certificate II in EAL (Employment) 22642VIC**  
**Duration:** 0.5 years. **Location:** Sunshine, Footscray Nicholson, Werribee, St Albans.

**Certificate III in EAL (Employment) 22643VIC**  
**Duration:** 0.5 years. **Location:** Sunshine, Footscray Nicholson, Werribee, St Albans.

**Certificate III in EAL (Further Study) 22645VIC**  
**Duration:** 0.5 years. **Location:** Sunshine, Footscray Nicholson, Werribee, St Albans.

**Certificate IV in EAL (Further Study) 22646VIC**  
**Duration:** 0.5 years. **Location:** Sunshine, Footscray Nicholson, Werribee, St Albans.

**Certificate I in General Education for Adults (Introductory) 22689VIC**  
**Duration:** 0.5 years. **Location:** Footscray Nicholson.

**Certificate I in General Education for Adults 22690VIC**  
**Duration:** 0.5 years. **Location:** Footscray Nicholson.

**Certificate II in General Education for Adults 22691VIC**  
**Duration:** 0.5 years. **Location:** Footscray Nicholson.

### Did you know?

If you complete our 16-week Foundations at VU course, there are **up to 40** different VU degree or diplomas you could be able to pathway into! (Conditions apply)

**Certificate III in General Education for Adults 22692VIC**  
**Duration:** 0.5 years. **Location:** Footscray Nicholson.

**Certificate I in Transition Education 22705VIC**  
**Duration:** 1 year. **Location:** Footscray Nicholson, St Albans.  
**Other admission requirements:** Entry to the Certificate I in Transition Education (22567VIC) is intended for post-compulsory school-age learners with evidence of a permanent cognitive or intellectual disability.

Evidence of permanent cognitive or intellectual disability could include but is not limited to:

- Evidence of permanent cognitive and/or intellectual disability could include but is not limited to:
- Formal assessment by a registered medical practitioner
- Doctors'/specialist reports
- Attendance at a Specialist School / SDS
- Integration support at school
- Integration support at school with a modified curriculum

This evidence is provided at the point of application.  
**Pathway from this course into:** Certificate I in Work Education (22566VIC) **Credits** N/A

## Hair & Beauty

Transform your passion into a profession and graduate ready to excel in salon, spas and beyond with a hair and beauty course at VU. You'll perfect your craft in our student-run salon, Aura at VU, while building connections with industry leaders.

### TAFE courses

**Certificate III in Barbering SHB30516**  
**Duration:** 1 year + 3 years Apprenticeship.  
**Location:** City, Industry.

**Certificate III in Beauty Services SHB30121**  
**Duration:** 0.5 years + 2 years VDSS. **Location:** City.  
**Pathway from this course into:** Diploma of Beauty Therapy (SHB50121) **Credits** N/A

**Certificate III in Hairdressing SHB30416**  
**Duration:** 1 year + 3 years Apprenticeship.  
**Location:** City, Industry.

**Diploma of Beauty Therapy SHB50121**  
**Duration:** 1 year. **Location:** City.  
**Pathway from this course into:** Bachelor of Dermal Sciences (HBDS) \*\*\* **Credits** 96  
**Pathway into this course from:** Certificate III in Beauty Services (SHB30121) **Credits** N/A

## Health

Train in world-class facilities, gain real experience through top industry partners, and graduate ready to thrive in the booming healthcare sector. Study health at VU to unlock your pathway to Australia's most in-demand careers.

### TAFE courses

**Certificate III in Allied Health Assistance HLT33021**  
**Duration:** 2 years VDSS.  
**Location:** Sunshine, Footscray Nicholson, Werribee.

**Certificate III in Health Administration HLT37315**  
**Duration:** 0.5 years. **Location:** Sunshine, Footscray Nicholson, Werribee, Industry.  
**Pathway from this course into:** Certificate IV in Allied Health Assistance (HLT43021) **Credits** N/A  
Certificate IV in Health Administration (HLT47321) **Credits** N/A  
Certificate III in Non-Emergency Patient Transport (HLT31120) **Credits** N/A

**Certificate III in Health Services Assistance HLT33115**  
**Duration:** 0.5 years + 2 years VDSS. **Location:** Sunshine, Footscray Nicholson, Werribee, Industry.  
**Pathway from this course into:** Certificate IV in Allied Health Assistance (HLT43021) **Credits** N/A

**Certificate III in Individual Support CHC33021**  
**Duration:** 10 months + 1 year Industry. **Location:** Footscray Nicholson, Sunshine, Werribee.  
**Pathway from this course into:** Certificate IV in Ageing Support (CHC43015) **Credits** N/A

**Certificate III in Non-Emergency Patient Transport HLT31120**  
**Duration:** 0.5 years. **Location:** Sunshine, Werribee, Online.  
**Other admission requirements:** Applicants must be at least 18 years old and hold a driver's licence (probationary licence accepted) at the time of commencement in the course.  
**Pathway from this course into:** Diploma of Emergency Health Care (HLT50120) **Credits** 0  
**Pathway into this course from:** Certificate III in Health Administration (HLT37315) **Credits** 0

**Certificate IV in Ageing Support CHC43015**  
**Duration:** 1 year. **Location:** Sunshine, Footscray Nicholson, Werribee, Industry.  
**Pathway from this course into:** Diploma of Nursing (HLT54121) **Credits** N/A  
**Pathway into this course from:** Certificate III in Individual Support (CHC33021) **Credits** N/A

**Certificate IV in Allied Health Assistance HLT43021**  
**Duration:** 1 year. **Location:** Sunshine, Werribee.  
**Pathway from this course into:** Diploma of Nursing (HLT54121) **Credits** N/A  
Diploma of Remedial Massage (HLT52015) **Credits** N/A  
**Pathway into this course from:** Certificate III in Health Services Assistance (HLT33115) **Credits** N/A

**Certificate IV in Health Administration HLT47321**  
**Duration:** 1 Year Traineeship. **Location:** Footscray Nicholson, Industry, Werribee.  
**Pathway into this course from:** Certificate III in Health Administration (HLT37315) **Credits**

**Diploma of Clinical Coding HLT50321**  
**Duration:** 1 year. **Location:** Online.  
**Pathway from this course into:** Bachelor of Data Science (NBDS) **Credits** 0  
Master of Global Public Health (HMGp) **Credits** 48

### Welcome to VU

### The VU Block Model®

### No one sees you like VU

### VU Early Entry

### Uniquely VU

### Uni, your way

### Health

### Education

### Law

### Business

### Cyber Security & IT

### Sport

### Trades

### TAFE at VU

### Meet your career co-captain

### Your career journey

### 2027 courses

### Glossary

### Our locations

### What next & how to apply

### FAQs

### Meet our grads

### Join us at our 2026 Open Day

<b>Diploma of Emergency Health Care</b> HLT51020	
<b>Duration:</b> 7 months. <b>Location:</b> Sunshine.	
<b>Other admission requirements:</b> Applicants must have completed Certificate III in Non-Emergency Patient Transport (HLT31120) prior to admission. If obtained outside of Victoria University you must submit a certified copy of both the Award and Academic Transcript with your application.	
<b>Pathway from this course into:</b>	<b>Credits</b>
Bachelor of Paramedicine (HBPD) ***	96
<b>Pathway into this course from:</b>	<b>Credits</b>
Certificate III in Non-Emergency Patient Transport (HLT31120)	N/A
Certificate III in Health Administration (HLT37315)	N/A

<b>Diploma of Nursing</b> HLT54121	
<b>Duration:</b> 2 years. <b>Location:</b> Sunshine, Werribee, St Albans.	
<b>Other admission requirements:</b> All applicants must be aged 18 years of age or over at time of course commencement. In addition to the above requirements, applicants must also be able to demonstrate that they meet the requirements of the Nursing and Midwifery Board of Australia's (NMBA) English language skills registration standard. For detailed admission requirements, visit the course pages on our website.	
<b>Pathway from this course into:</b>	<b>Credits</b>
Bachelor of Nursing (HBNB) ***	96
<b>Pathway into this course from:</b>	<b>Credits</b>
Certificate IV in Ageing Support (CHC43015)	N/A
Certificate IV in Allied Health Assistance (HLT43021)	N/A

<b>Higher Education courses</b>	
<b>Undergraduate Certificate in Diet and Health</b> HUDH	
<b>Duration:</b> 0.5 years. <b>Location:</b> Footscray Park.	
<b>Other admission requirements:</b> Completion of an Australian Senior Secondary Certificate (VCE or equivalent) incl. Units 3 & 4: a study score of at least 25 in English (EAL) or 20 in any other English; plus a study score of at least 20 in one of the following: Biology, Chemistry, Health & Human Development, Mathematics (any) or Physical Education.	

<b>Undergraduate Certificate in Health Science</b> HUHS	
<b>Duration:</b> 0.5 years. <b>Location:</b> Footscray Park.	
<b>Other admission requirements:</b> Completion of an Australian Senior Secondary Certificate (VCE or equivalent) incl. Units 3 & 4: a study score of at least 25 in English (EAL) or 20 in any other English.	

<b>Undergraduate Certificate in Laser Safety</b> HULS	
<b>Duration:</b> 0.5 years. <b>Location:</b> City.	
<b>Other admission requirements:</b> Not applicable.	

<b>Bachelor of Applied Movement Sciences/Master of Physiotherapy</b> HCPT	
<b>Duration:</b> 4.5 years. <b>Location:</b> Footscray Park.	
<b>ATAR required:</b> Yes.	
<b>Other admission requirements:</b> year 12: Completion of an Australian Senior Secondary Certificate (VCE or equivalent) incl. Units 3 & 4: a study score of at least 30 in English (EAL) or 25 in any other English; plus a study score of at least 25 in one of Biology, Chemistry or Physics, Mathematical Methods (any) or Specialist Mathematics.	

<b>Bachelor of Chiropractic Science</b> HBCS	
<b>Duration:</b> 3 years. <b>Location:</b> City.	
<b>ATAR required:</b> Yes.	
<b>Other admission requirements:</b> Completion of an Australian Senior Secondary Certificate (VCE or equivalent) with an ATAR of 80 or above (after adjustments) incl. Units 3 & 4: a study score of at least 25 in English (EAL) or 20 in any other English other than EAL; plus a study score of at least 25 in one of Biology, Chemistry, any Mathematics or Physics.	
<b>Pathway into this course from:</b>	<b>Credits</b>
Diploma of Remedial Massage (HLT52021)	0

<b>Bachelor of Dermal Sciences</b> HBDS	
<b>Duration:</b> 4 years. <b>Location:</b> City.	
<b>Other admission requirements:</b> Completion of an Australian Senior Secondary Certificate (VCE or equivalent) incl. Units 3 & 4: a study score of at least 25 in English (EAL) or 20 in any other English.	
<b>Pathway into this course from:</b>	<b>Credits</b>
Diploma of Beauty Therapy (SHB50121) ***	96
Foundations at VU (JYAC) ***	0

<b>Bachelor of Health Science</b> HBHL	
<b>Duration:</b> 3 years. <b>Location:</b> St Albans.	
<b>Other admission requirements:</b> Completion of an Australian Senior Secondary Certificate (VCE or equivalent) incl. Units 3 & 4: a study score of at least 25 in English (EAL) or 20 in any other English.	
<b>Pathway from this course into:</b>	<b>Credits</b>
Master of Global Public Health (HMGP)	48
<b>Pathway into this course from:</b>	<b>Credits</b>
Foundations at VU (JYAC)	0

<b>Bachelor of Human Nutrition</b> HBNT	
<b>Duration:</b> 3 years. <b>Location:</b> Footscray Park.	
<b>Other admission requirements:</b> Completion of an Australian Senior Secondary Certificate (VCE or equivalent) incl. Units 3 & 4: a study score of at least 25 in English (EAL) or 20 in any other English; plus a study score of at least 20 in one of the following: Biology, Chemistry, Health & Human Development, Mathematics (any) or Physical Education.	
<b>Pathway into this course from:</b>	<b>Credits</b>
Foundations at VU (JYAC)	0

<b>Bachelor of Midwifery/ Bachelor of Nursing</b> HBMA	
<b>Duration:</b> 4 years. <b>Location:</b> St Albans, Sunshine.	
<b>ATAR required:</b> Yes.	
<b>Other admission requirements:</b> Completion of an Australian Senior Secondary Certificate (VCE or equivalent); plus Units 3 & 4: a study score of at least 30 in English (EAL) or 25 in any other English other than EAL; plus Units 3 & 4: a study score of at least 20 in one of Biology, Chemistry, Health and Human Development, any Mathematics or Psychology. Please <b>also</b> refer to <b>additional section on website</b> regarding English language skills registration standard for domestic students.	

<b>Bachelor of Nursing</b> HBNB	
<b>Duration:</b> 3 years. <b>Location:</b> St Albans.	
<b>ATAR required:</b> Yes.	
<b>Other admission requirements:</b> Completion of an Australian Senior Secondary Certificate (VCE or equivalent) incl. Units 3 & 4: a study score of at least 30 in English (EAL) or 25 in any other English; and Units 3 & 4: a study score of at least 20 in one of Biology, Chemistry, Health and Human Development, any Mathematics or Psychology. Please <b>also</b> refer to <b>additional section on website</b> regarding English language skills registration standard for domestic students.	
<b>Pathway into this course from:</b>	<b>Credits</b>
Diploma of Nursing (HLT54121) ***	96

<b>Bachelor of Nutritional Science/ Master of Dietetics</b> HCND	
<b>Duration:</b> 4.5 years. <b>Location:</b> Footscray Park.	
<b>ATAR required:</b> Yes.	
<b>Other admission requirements:</b> Completion of an Australian Senior Secondary Certificate (VCE or equivalent) incl. Units 3 & 4: a study score of at least 30 in English (EAL) or 25 in any other English; plus a study score of at least 25 in two of the following: Biology, Chemistry, Physics, Health & Human Development, Mathematics (any) or Physical Education.	

<b>Bachelor of Paramedicine</b> HBPD	
<b>Duration:</b> 3 years. <b>Location:</b> St Albans.	
<b>ATAR required:</b> Yes.	
<b>Other admission requirements:</b> Completion of an Australian Senior Secondary Certificate (VCE or equivalent) incl. Units 3 & 4: a study score of at least 25 in English (EAL) or 20 in any other English.	
<b>Pathway into this course from:</b>	<b>Credits</b>
Diploma of Emergency Health Care (HLT51020) ***	96

<b>Bachelor of Science (Osteopathy)/ Master of Health Science (Osteopathy)</b> HCOP	
<b>Duration:</b> 4.5 years. <b>Location:</b> City.	
<b>ATAR required:</b> Yes.	
<b>Other admission requirements:</b> Completion of an Australian Senior Secondary Certificate (VCE or equivalent) incl. Units 3 & 4: a study score of at least 25 in English (EAL) or 20 in any other English; plus a study score of at least 20 in one of Biology, Chemistry, any Mathematics or Physics.	

<b>Bachelor of Speech and Language Sciences/Master of Speech Pathology</b> HCSP	
<b>Duration:</b> 4.5 years. <b>Location:</b> Footscray Park.	
<b>ATAR required:</b> Yes.	
<b>Other admission requirements:</b> Completion of an Australian Senior Secondary Certificate (VCE or equivalent) incl. Units 3 & 4: a study score of at least 30 in English (EAL) or at least 25 in any other English; plus a study score of at least 20 in two of Biology, Chemistry, Physics, Mathematics (any), Psychology, Sociology, Texts and Traditions, Health and Human Development, or LOTE (any).	

<b>Postgraduate courses</b>	
<b>Graduate Certificate in Global Health Leadership</b> HTGL	
<b>Duration:</b> 8 months. <b>Location:</b> VU Online.	

<b>Graduate Certificate in Global Public Health</b> HTGP	
<b>Duration:</b> 0.5 years. <b>Location:</b> City.	

<b>Graduate Certificate in Health Promotion</b> HTHP	
<b>Duration:</b> 8 months. <b>Location:</b> VU Online.	

<b>Graduate Certificate in Mental Health Nursing</b> HTMN	
<b>Duration:</b> 8 months. <b>Location:</b> VU Online.	

<b>Graduate Certificate in Nursing</b> HTNG	
<b>Duration:</b> 8 months. <b>Location:</b> VU Online.	

## Hospitality, Tourism & Events

Bring your love for food and travel to life at VU. Our courses in hospitality, tourism and events will see you train in industry standard kitchens, refine culinary techniques, and develop leadership skills for diverse careers in global industries.

<b>TAFE courses</b>	
<b>Certificate II in Cookery</b> SIT20421	
<b>Duration:</b> 2 years VDSS. <b>Location:</b> Footscray Nicholson.	
<b>Pathway from this course into:</b>	<b>Credits</b>
Certificate III in Commercial Cookery (SIT30821)	N/A
Certificate IV in Kitchen Management (SIT40521)	N/A

<b>Certificate II in Hospitality</b> SIT20322	
<b>Duration:</b> 2 years VDSS. <b>Location:</b> Footscray Nicholson.	
<b>Pathway from this course into:</b>	<b>Credits</b>
Certificate III in Hospitality (SIT30622)	N/A
Diploma of Hospitality Management (SIT50422)	N/A

<b>Certificate III in Commercial Cookery</b> SIT30821	
<b>Duration:</b> 1 year + 3 years Apprenticeship.	
<b>Location:</b> Footscray Nicholson.	
<b>Pathway from this course into:</b>	<b>Credits</b>
Certificate IV in Kitchen Management (SIT40521)	N/A
<b>Pathway into this course from:</b>	<b>Credits</b>
Certificate II in Cookery (SIT20421)	N/A
Certificate III in Patisserie (SIT30121)	N/A

<b>Certificate III in Hospitality</b> SIT30622	
<b>Duration:</b> 0.5 years + 2 years Traineeship.	
<b>Location:</b> Footscray Nicholson.	
<b>Pathway from this course into:</b>	<b>Credits</b>
Certificate IV in Kitchen Management (SIT40521)	N/A
Diploma of Hospitality Management (SIT50422)	N/A
<b>Pathway into this course from:</b>	<b>Credits</b>
Certificate II in Hospitality (SIT20322)	N/A

<b>Certificate III in Patisserie</b> SIT31021	
<b>Duration:</b> 1 year + 2 years Traineeship.	
<b>Location:</b> Footscray Nicholson.	
<b>Pathway from this course into:</b>	<b>Credits</b>
Certificate III in Commercial Cookery (SIT30821)	N/A
Certificate IV in Kitchen Management (SIT40521)	N/A

<b>Graduate Certificate in Nursing Informatics Leadership</b> HTNI	
<b>Duration:</b> 8 months. <b>Location:</b> VU Online.	

<b>Graduate Certificate in Public Health</b> HTPT	
<b>Duration:</b> 8 months. <b>Location:</b> VU Online.	

<b>Graduate Diploma in Mental Health Nursing</b> HGMN	
<b>Duration:</b> 16 months. <b>Location:</b> VU Online.	

<b>Master of Clinical Exercise Science and Rehabilitation</b> AMEP	
<b>Duration:</b> 1.5 years. <b>Location:</b> Footscray Park.	

<b>Master of Dietetics</b> HMDT	
<b>Duration:</b> 2 years. <b>Location:</b> St Albans.	

<b>Master of Global Public Health</b> HMGP	
<b>Duration:</b> 2 years. <b>Location:</b> City.	
<b>Pathway into this course from:</b>	<b>Credits</b>
Diploma of Clinical Coding (HLT50321)	48
Bachelor of Health Science (HBHL)	48

<b>Master of Mental Health Nursing</b> HMMN	
<b>Duration:</b> 2 years. <b>Location:</b> VU Online.	

<b>Master of Nursing</b> HMNG	
<b>Duration:</b> 2 years. <b>Location:</b> VU Online.	

<b>Master of Physiotherapy</b> HMPS	
<b>Duration:</b> 2 years. <b>Location:</b> Footscray Park.	

<b>Master of Public Health</b> HMPPT	
<b>Duration:</b> 2 years. <b>Location:</b> VU Online.	

<b>Master of Speech Pathology</b> HMST	
<b>Duration:</b> 2 years. <b>Location:</b> Footscray Park.	

<b>Advanced Diploma of Hospitality Management</b> SIT60322	
<b>Duration:</b> 1.5 years. <b>Location:</b> Footscray Nicholson.	
<b>Pathway from this course into:</b>	<b>Credits</b>
Bachelor of Business (BBNS)	144
Associate Degree in Hospitality and Hotel Management (VAHH)	144
<b>Pathway into this course from:</b>	<b>Credits</b>
Certificate IV in Kitchen Management (SIT40521)	N/A
Diploma of Travel and Tourism Management (SIT50122)	N/A

<b>Higher Education courses</b>	
<b>Associate Degree in Hospitality and Hotel Management</b> VAHH	
<b>Duration:</b> 2 years. <b>Location:</b> Footscray Nicholson.	
<b>Other admission requirements:</b> Completion of an Australian Senior Secondary Certificate (VCE or equivalent) incl. Units 3 & 4: a study score of at least 25 in English (EAL) or 20 in any other English.	
<b>Pathway from this course into:</b>	<b>Credits</b>
Bachelor of Business (BBNS)	192
<b>Pathway into this course from:</b>	<b>Credits</b>
Advanced Diploma of Hospitality Management (SIT60322)	144
Diploma of Hospitality Management (SIT50422)	96

<b>Postgraduate courses</b>	
<b>Master of Tourism Hospitality and Events Management</b> BMTE	
<b>Duration:</b> 2 years. <b>Location:</b> City.	

For more information on courses and TAFE admission requirements, visit the course pages on our website. Information is correct at the time of publication, March 2026. All Higher Education courses require completion of an Australian Senior Secondary Certificate (VCE or equivalent) unless students are entering via a pathway. Some courses may have additional entry requirements than listed here. Please check the website course pages for more details. Bachelor's degrees are traditionally three years in duration. Honours will generally extend the duration of the course by 1-2 years. CRICOS 00124K (Melbourne), 02475D (Sydney and Brisbane). RTO 3113. TEQSA PRV12152.

\*Please see course page for additional admissions requirements. \*\*Meeting the minimum requirement for entry to second year does not guarantee entry. Places are limited and applicants will be competitively ranked based on course Weighted Average Mark from the first two semesters of study. \*\*\*There may be a limit on how many students can access pathways to this course due to high demand. If you are eligible for a pathway but unsuccessful in securing a place, please contact VUHQ (Student Service Centre) on +61 3 9919 6100 for advice.

### Welcome to VU

### The VU Block Model®

### No one sees you like VU

### VU Early Entry

### Uniquely VU

### Uni, your way

### Health

### Education

### Law

### Business

### Cyber Security & IT

### Sport

### Trades

### TAFE at VU

### Meet your career co-captain

### Your career journey

### 2027 courses

### Glossary

### Our locations

### What next & how to apply

### FAQs

### Meet our grads

### Join us at our 2026 Open Day

## Law

Shape the future of justice with our law courses, building practical legal skills, critical thinking, legal practice and advocacy expertise. Explore roles in migration law, criminology or business, supported by industry connections and real-world learning.

### TAFE courses

<b>Certificate IV in Legal Services</b> BSB40620	
<b>Duration:</b> 0.5 years. <b>Location:</b> City.	
<b>Pathway from this course into:</b>	<b>Credits</b>
Diploma of Paralegal Services (BSB50720)	N/A

### Diploma of Paralegal Services BSB50720

**Duration:** 0.5 years. **Location:** City.  
**Other admission requirements:** Must provide evidence of the following: Completion of units (or equivalent competencies): BSBLEG314 Protect information in a legal services environment, BSBLEG423 Conduct simple legal research; and BSBLEG424 Support the drafting of complex legal document or Completion of BSBS00106 Introduction to Paralegal Services Skill Set or Completion of BSB40620 Certificate IV in Legal Services or two years equivalent full-time relevant work experience.

<b>Pathway from this course into:</b>	<b>Credits</b>
Bachelor of Criminology (LBCR)	12
Bachelor of Laws (BLAW)	24
Bachelor of Legal Services (LBSL)	36
<b>Pathway into this course from:</b>	<b>Credits</b>
Certificate IV in Legal Services (BSB40620)	N/A

### Higher Education courses

#### Bachelor of Laws BLAW

**Duration:** 4 years. **Location:** City.  
**ATAR required:** Yes.  
**Other admission requirements:** Completion of an Australian Senior Secondary Certificate (VCE or equivalent) incl. Units 3 & 4: a study score of at least 30 in English (EAL) or 25 in any other English; plus Units 3 & 4: a study score of at least 20 in one of Economics, any History, Legal Studies, Australian Politics, Global Politics or Psychology.

<b>Pathway into this course from:</b>	<b>Credits</b>
Diploma of Paralegal Services (BSB50720)	24
Graduate Diploma in Migration Law (LGML)	60

#### Bachelor of Laws (Graduate Entry) BLGE

**Duration:** 3 years. **Location:** City.  
**Other admission requirements:** Previous HE study: Completion of an Australian Bachelor degree (or equivalent).  
**Admission requirements (international):** Completion of an Australian Bachelor degree (or equivalent); plus IELTS (or equivalent): Overall score of 6.5 (with no band less than 6.0 in Listening, Reading, Writing and Speaking).

<b>Pathway into this course from:</b>	<b>Credits</b>
Graduate Diploma in Migration Law (LGML)	72

#### Bachelor of Laws/Bachelor of Arts LBLA

**Duration:** 5 years. **Location:** City, Footscray Park.  
**ATAR required:** Yes.  
**Other admission requirements:** Completion of an Australian Senior Secondary Certificate (VCE or equivalent) incl. Units 3 & 4: a study score of at least 30 in English (EAL) or 25 in any other English; plus Units 3 & 4: a study score of at least 20 in one of Economics, any History, Legal Studies, Australian Politics, Global Politics or Psychology.

#### Bachelor of Laws/Bachelor of Business LBWB

**Duration:** 5 years. **Location:** City.  
**ATAR required:** Yes.  
**Other admission requirements:** Completion of an Australian Senior Secondary Certificate (VCE or equivalent) incl. Units 3 & 4: a study score of at least 30 in English (EAL) or 25 in any other English; plus Units 3 & 4: a study score of at least 20 in one of Economics, any History, Legal Studies, Australian Politics, Global Politics or Psychology.

#### Bachelor of Laws/ Bachelor of Criminology LBLC

**Duration:** 4.5 years. **Location:** City, Online.  
**ATAR required:** Yes.  
**Other admission requirements:** Completion of an Australian Senior Secondary Certificate (VCE or equivalent) incl. Units 3 & 4: a study score of at least 30 in English (EAL) or 25 in any other English; plus Units 3 & 4: a study score of at least 20 in one of Economics, any History, Legal Studies, Australian Politics, Global Politics or Psychology.

#### Bachelor of Laws/Bachelor of Psychological Studies LBWP

**Duration:** 5 years. **Location:** City, Footscray Park.  
**ATAR required:** Yes.  
**Other admission requirements:** Completion of an Australian Senior Secondary Certificate (VCE or equivalent) incl. Units 3 & 4: a study score of at least 30 in English (EAL) or 25 in any other English; plus Units 3 & 4: a study score of at least 20 in one of Economics, any History, Legal Studies, Australian Politics, Global Politics or Psychology.

#### Bachelor of Laws (Honours) LHLW

**Duration:** 4 years. **Location:** City.  
**Other admission requirements:** Current VU students in any Bachelor of Laws may apply to transfer into the Bachelor of Laws (Honours) degree once they have completed a minimum 192 credit points and have attained an average mark of Distinction or above i.e. 70–100%. Applicants will be assessed on the highest grades achieved in the top 12 Law units. Students will be further assessed on an outline of a proposed thesis topic and availability of a college-based or college affiliated supervisor. Successful applicants will enrol in both Advanced Research Legal Methods and Advanced Legal Research Dissertation instead of 24 credit points of law electives.

#### Bachelor of Laws (Honours) (Graduate Entry) LHGE

**Duration:** 3 years. **Location:** City.  
**Other admission requirements:** Current VU students in any Bachelor of Laws may apply to transfer into the Bachelor of Laws (Honours) degree once they have completed a minimum 192 credit points and have attained an average mark of Distinction or above i.e. 70–100%. Applicants will be assessed on the highest grades achieved in the top 12 Law units. Students will be further assessed on an outline of a proposed thesis topic and availability of a college-based or college affiliated supervisor. Successful applicants will enrol in both Advanced Research Legal Methods and Advanced Legal Research Dissertation instead of 24 credit points of law electives.

#### Bachelor of Laws (Honours)/ Bachelor of Arts LHWA

**Duration:** 5 years. **Location:** City, Footscray Park.  
**Other admission requirements:** Current VU students in any Bachelor of Laws may apply to transfer into the Bachelor of Laws (Honours) degree once they have completed a minimum 192 credit points and have attained an average mark of Distinction or above i.e. 70–100%. Applicants will be assessed on the highest grades achieved in the top 12 Law units. Students will be further assessed on an outline of a proposed thesis topic and availability of a college-based or college affiliated supervisor. Successful applicants will enrol in both Advanced Research Legal Methods and Advanced Legal Research Dissertation instead of 24 credit points of law electives.

#### Bachelor of Laws (Honours)/ Bachelor of Business LHWB

**Duration:** 5 years. **Location:** City, Footscray Park, Online.  
**Other admission requirements:** Current VU students in any Bachelor of Laws may apply to transfer into the Bachelor of Laws (Honours) degree once they have completed a minimum 192 credit points and have attained an average mark of Distinction or above i.e. 70–100%. Applicants will be assessed on the highest grades achieved in the top 12 Law units. Students will be further assessed on an outline of a proposed thesis topic and availability of a college-based or college affiliated supervisor. Successful applicants will enrol in both Advanced Research Legal Methods and Advanced Legal Research Dissertation instead of 24 credit points of law electives.

#### Bachelor of Laws (Honours)/ Bachelor of Criminology LHCR

**Duration:** 4.5 years. **Location:** City, Online.  
**Other admission requirements:** Current VU students in any Bachelor of Laws may apply to transfer into the Bachelor of Laws (Honours) degree once they have completed a minimum 192 credit points and have attained an average mark of Distinction or above i.e. 70–100%. Applicants will be assessed on the highest grades achieved in the top 12 Law units. Students will be further assessed on an outline of a proposed thesis topic and availability of a college-based or college affiliated supervisor. Successful applicants will enrol in both Advanced Research Legal Methods and Advanced Legal Research Dissertation instead of 24 credit points of law electives.

#### Bachelor of Laws (Honours)/Bachelor of Psychology (Honours) LHWP

**Duration:** 6 years. **Location:** City, Footscray Park.  
**ATAR required:** Yes.  
**Other admission requirements:** Completion of an Australian Senior Secondary Certificate (VCE or equivalent) incl. Units 3 & 4: a study score of at least 30 in English (EAL) or 25 in any other English. Plus Units 3 & 4: a study score of at least 20 in one of Economics, any History, Legal Studies, Australian Politics, Global Politics or Psychology.

#### Bachelor of Legal Services LBLS

**Duration:** 3 years. **Location:** City, Footscray Park, Online.  
**Other admission requirements:** Completion of an Australian Senior Secondary Certificate (VCE or equivalent) incl. Units 3 & 4: a study score of at least 25 in English (EAL) or 20 in any other English.  
**Pathway into this course from:**

<b>Credits</b>	
Certificate IV in Legal Services (BSB40620)	0
Diploma of Paralegal Services (BSB50720)	36
Foundations at VU (JYAC)	0

#### Bachelor of Criminology LBCR

**Duration:** 3 years. **Location:** City.  
**Other admission requirements:** Completion of an Australian Senior Secondary Certificate (VCE or equivalent) incl. Units 3 & 4: a study score of at least 25 in English (EAL) or 20 in any other English.  
**Pathway into this course from:**

<b>Credits</b>	
Certificate IV in Legal Services (BSB40620)	0
Diploma of Paralegal Services (BSB50720)	12
Foundations at VU (JYAC)	0

#### Bachelor of Criminology/Bachelor of Psychological Studies LBPC

**Duration:** 4 years. **Location:** City.  
**Other admission requirements:** Completion of an Australian Senior Secondary Certificate (VCE or equivalent) incl. Units 3 & 4: a study score of at least 25 in English (EAL) or 20 in any other English.

### Postgraduate courses

#### Graduate Certificate in Countering Violent Extremism LTCV

**Duration:** 1 year. **Location:** Online.

## Psychology

Explore the human mind at VU: our courses in psychology will help you gain skills across counselling, mental health, and research to support individuals and communities. Graduate ready for further studies, or careers in clinical practice and social work.

### TAFE courses

#### Certificate IV in Mental Health CHC43315

**Duration:** 1 year. **Location:** City, Footscray Nicholson, Online, Werribee.  
**Other admission requirements:** Must be at least 18 years of age or over at the commencement of the course.  
**Pathway from this course into:**

<b>Credits</b>	
Bachelor of Psychological Studies (ABPA)	0
Certificate IV in Alcohol and Other Drugs (CHC43215)	N/A
Diploma of Community Services (CHC52021)	N/A
Diploma of Youth Work (CHC50421)	N/A

### Higher Education courses

#### Undergraduate Certificate in Interpersonal and Organisational Skills HU10

**Duration:** 0.5 years. **Location:** Footscray Park.  
**Other admission requirements:** Completion of an Australian Senior Secondary Certificate (VCE or equivalent) incl. Units 3 & 4: a study score of at least 25 in English (EAL) or 20 in any other English.

#### Undergraduate Undergraduate Certificate in Psychological Studies HUPS

**Duration:** 0.5 years. **Location:** Footscray Park.  
**Other admission requirements:** Completion of an Australian Senior Secondary Certificate (VCE or equivalent) incl. Units 3 & 4: a study score of at least 25 in English (EAL) or 20 in any other English.

#### Bachelor of Psychological Studies ABPA

**Duration:** 3 years. **Location:** Footscray Park.  
**Other admission requirements:** Completion of an Australian Senior Secondary Certificate (VCE or equivalent) incl. Units 3 & 4: a study score of at least 25 in English (EAL) or 20 in any other English.  
**Pathway into this course from:**

<b>Credits</b>	
Certificate IV in Mental Health (CHC43315)	0
Foundations at VU (JYAC)	0

#### Bachelor of Psychological Studies/ Bachelor of Business ABPB

**Duration:** 4 years. **Location:** Footscray Park.  
**Other admission requirements:** Completion of an Australian Senior Secondary Certificate (VCE or equivalent) incl. Units 3 & 4: a study score of at least 25 in English (EAL) or 20 in any other English.  
**Pathway into this course from:**

<b>Credits</b>	
Foundations at VU (JYAC)	0

#### Graduate Certificate in Crime Prevention LTCP

**Duration:** 0.5 years. **Location:** City.

#### Graduate Diploma in Migration Law LGML

**Duration:** 1 year. **Location:** City, Online.  
**Pathway from this course into:**

<b>Credits</b>	
Bachelor of Law (BLAW)	60
Bachelor of Laws (Graduate Entry) (BLGE)	72

### Short courses

#### Introduction to Paralegal Services Skill Set BSBS00106

**Duration:** 9 weeks. **Location:** City, Online.

#### Master of Applied Psychology (Clinical Psychology) AMAL

**Duration:** 2 years. **Location:** Footscray Park.  
**Other admission requirements:** Applicants will also be required to:

- Submit a completed VU supplementary information form.
- Provide two referee statements (one personal and one academic) submitted via Australian Psychology Postgraduate Reference System at <https://www.psychologyreference.org/>
- Attend an interview (short listed applicants only)
- Obtain a Working with Children Check prior to being placed in a work placement setting, in accordance with the accreditation requirements and the Department of Justice.

Students with an overseas qualification in psychology will need to provide certification from the Australian Psychology Society (APS) that their qualification/s are equivalent to an APAC-approved, 4-year sequence in psychology.

#### Master of Child and Adolescent Mental Health HMCH

**Duration:** 2 years. **Location:** VU Online.

#### Master of Counselling AMPE

**Duration:** 2 years. **Location:** City.  
**Other admission requirements:** Applicants must be able to provide academic and professional references and are required to attend a selection interview.

#### Master of Mental Health HMMH

**Duration:** 2 years. **Location:** VU Online.

#### Master of Professional Psychology HMPP

**Duration:** 1 year. **Location:** Footscray Park.  
**Other admission requirements:** Applicants will also be required to:

- Submit a completed VU supplementary information form.
- Provide two referee statements (one personal and one academic) submitted via Australian Psychology Postgraduate Reference System at <https://www.psychologyreference.org/>
- Attend an interview (short listed applicants only)
- Obtain a Working with Children Check prior to being placed in a work placement setting, in accordance with the accreditation requirements and the Department of Justice.

Students with an overseas qualification in psychology will need to provide certification from the Australian Psychological Society (APS) that their qualification/s are equivalent to an APAC-approved, 4-year sequence in psychology.

## Welcome to VU

## The VU Block Model®

## No one sees you like VU

## VU Early Entry

## Uniquely VU

## Uni, your way

## Health

## Education

## Law

## Business

## Cyber Security & IT

## Sport

## Trades

## TAFE at VU

## Meet your career co-captain

## Your career journey

## 2027 courses

## Glossary

## Our locations

## What next & how to apply

## FAQs

## Meet our grads

## Join us at our 2026 Open Day

# Sport & Exercise Science

Bring your love for sport to life: our courses in sport and exercise science will see you develop industry-relevant, hands-on skills in sport science, physical education or rehabilitation to thrive in your fitness, health, or science career.

### TAFE courses

<b>Diploma of Remedial Massage</b> HLT52021	
<b>Duration:</b> 1 year. <b>Location:</b> Footscray Park.	
<b>Pathway from this course into:</b>	<b>Credits</b>
Bachelor of Chiropractic Science (HBCS)	0
Bachelor of Exercise and Sport Science (SBEC)	0
Bachelor of Outdoor Education and Environmental Science (SBOE)	0
Bachelor of Sport Science (Human Movement)/Bachelor of Sport Management (SBHS) Science (SBPH)	0
Bachelor of Physical Education and Sport Science (SBPH)	0
Bachelor of Sport Science (SBSA)	0
Bachelor of Sport Management/Bachelor of Business (SBSB)	0
Bachelor of Sport Management (SBSM)	0
<b>Pathway into this course from:</b>	<b>Credits</b>
Certificate IV in Allied Health Assistance (HLT43021)	N/A

<b>Diploma of Sport</b> SIS50321	
<b>Duration:</b> 1 year. <b>Location:</b> Footscray Park.	
<b>Other admission requirements:</b> A current Working with Children Check.	

### Higher Education courses

<b>Undergraduate Certificate in Primary Physical Education</b> SUPP	
<b>Duration:</b> 0.5 years. <b>Location:</b> Footscray Park.	
<b>Other admission requirements:</b> Completion of an Australian Senior Secondary Certificate (VCE or equivalent) incl. Units 3 & 4: a study score of at least 25 in English (EAL) or 20 in any other English.	

<b>Undergraduate Certificate in Secondary Physical Education</b> susp	
<b>Duration:</b> 0.5 years. <b>Location:</b> Footscray Park.	
<b>Other admission requirements:</b> Completion of an Australian Senior Secondary Certificate (VCE or equivalent) incl. Units 3 & 4: a study score of at least 25 in English (EAL) or 20 in any other English.	

<b>Bachelor of Exercise and Sport Science</b> SBEC	
<b>Duration:</b> 3 years. <b>Location:</b> Footscray Park	
<b>ATAR required:</b> Yes.	
<b>Other admission requirements:</b> Completion of an Australian Senior Secondary Certificate (VCE or equivalent) incl. Units 3 & 4: a study score of at least 25 in English (EAL) or 20 in any other English.	
<b>Pathway into this course from:</b>	<b>Credits</b>
Diploma of Remedial Massage (HLT52021)	0
Foundations at VU (JYAC)	0

<b>Bachelor of Physical Education and Sport Science</b> SBPH	
<b>Duration:</b> 3 years. <b>Location:</b> Footscray Park.	
<b>Other admission requirements:</b> Completion of an Australian Senior Secondary Certificate (VCE or equivalent) incl. Units 3 & 4: a study score of at least 25 in English (EAL) or 20 in any other English.	
<b>Pathway into this course from:</b>	<b>Credits</b>
Diploma of Remedial Massage (HLT52021)	0
Foundations at VU (JYAC)	0

<b>Bachelor of Sport Science</b> SBSA	
<b>Duration:</b> 3 years. <b>Location:</b> Footscray Park.	
<b>Other admission requirements:</b> Completion of an Australian Senior Secondary Certificate (VCE or equivalent) incl. Units 3 & 4: a study score of at least 25 in English (EAL) or 20 in any other English.	
<b>Pathway into this course from:</b>	<b>Credits</b>
Diploma of Remedial Massage (HLT52021)	0
Foundations at VU (JYAC)	0

<b>Bachelor of Sport Science (Human Movement)/Bachelor of Psychological Studies</b> SBHP	
<b>Duration:</b> 4 years. <b>Location:</b> Footscray Park.	
<b>Other admission requirements:</b> Completion of an Australian Senior Secondary Certificate (VCE or equivalent) incl. Units 3 & 4: a study score of at least 25 in English (EAL) or 20 in any other English.	
<b>Pathway into this course from:</b>	<b>Credits</b>
Diploma of Remedial Massage (HLT52021)	0
Foundations at VU (JYAC)	0

<b>Bachelor of Sport Science (Human Movement)/Bachelor of Sport Management</b> SBHS	
<b>Duration:</b> 4 years. <b>Location:</b> Footscray Park.	
<b>Other admission requirements:</b> Completion of an Australian Senior Secondary Certificate (VCE or equivalent) incl. Units 3 & 4: a study score of at least 25 in English (EAL) or 20 in any other English.	
<b>Pathway into this course from:</b>	<b>Credits</b>
Diploma of Remedial Massage (HLT52021)	0
Foundations at VU (JYAC)	0

### Postgraduate courses

<b>Graduate Certificate in Data Analytics for Sport Performance</b> STSP	
<b>Duration:</b> 0.5 years. <b>Location:</b> Footscray Park, Online.	

<b>Graduate Certificate in Strength and Conditioning</b> STSA	
<b>Duration:</b> 0.5 years. <b>Location:</b> Footscray Park.	

<b>Master of Sport and Exercise Science</b> SMES	
<b>Duration:</b> 1.5 years. <b>Location:</b> Footscray Park.	

<b>Certificate III in Civil Construction Plant Operations</b> RII30820	
<b>Duration:</b> 0.5 years + up to 3 years Traineeship.	
<b>Location:</b> Werribee, Industry.	
<b>Pathway into this course from:</b>	<b>Credits</b>
Certificate II in Civil Construction (RII20720)	N/A

<b>Certificate III in Electrotechnology Electrician</b> UEE30820	
<b>Duration:</b> 4 years Apprenticeship.	
<b>Location:</b> Sunshine.	
<b>Pathway into this course from:</b>	<b>Credits</b>
Certificate II in Electrotechnology (Pre-vocational) (22682VIC)	N/A

<b>Certificate III in Engineering – Fabrication Trade</b> MEM31922	
<b>Duration:</b> Up to 4 years Apprenticeship.	
<b>Location:</b> Sunshine.	

<b>Certificate III in Engineering – Mechanical Trade</b> MEM30219	
<b>Duration:</b> Up to 4 years Apprenticeship.	
<b>Location:</b> Sunshine.	

<b>Certificate III in Plumbing</b> CPC32420	
<b>Duration:</b> 4 years Apprenticeship.	
<b>Location:</b> Sunshine.	
<b>Pathway into this course from:</b>	<b>Credits</b>
Certificate II in Plumbing (Pre-apprenticeship) (22701VIC)	N/A
Certificate IV in Plumbing and Services (CPC40920)	N/A

<b>Certificate III in Signs and Graphics</b> CPC30216	
<b>Duration:</b> Up to 4 years Apprenticeship.	
<b>Location:</b> Sunshine.	

<b>Certificate IV in Plumbing and Services</b> CPC40920	
<b>Duration:</b> 3 years. <b>Location:</b> Sunshine.	
<b>Other admission requirements:</b> Applicants must hold Certificate III in Plumbing or be authorised to undertake plumbing work by an Australian regulator/licensing body.	
<b>Pathway into this course from:</b>	<b>Credits</b>
Certificate II in Drainage (CPC20720)	N/A
Certificate III in Plumbing (CPC32420)	N/A

### Short courses

<b>Plumbing Licence for Common Units Skill Set</b> PLUMLICSS1	
<b>Duration:</b> 6 months. <b>Location:</b> Sunshine.	

<b>Plumbing Licence in Drainage Work Skill Set</b> PLUMLICSS2	
<b>Duration:</b> 7 months. <b>Location:</b> Sunshine.	

<b>Plumbing Licence in Gasfitting Work Skill Set</b> PLUMLICSS3	
<b>Duration:</b> 3 months. <b>Location:</b> Sunshine.	

<b>Plumbing Licence in Mechanical Services Skill Set</b> PLUMLICSS4	
<b>Duration:</b> 5 months. <b>Location:</b> Sunshine.	

<b>Plumbing Licence in Roofing (Stormwater) Work Skill Set</b> PLUMLICSS5	
<b>Duration:</b> 15 weeks. <b>Location:</b> Sunshine.	

<b>Plumbing Licence in Sanitary Work Skill Set</b> PLUMLICSS6	
<b>Duration:</b> 3 months. <b>Location:</b> Sunshine.	

<b>Plumbing Licence in Water Supply Work Skill Set</b> PLUMLICSS7	
<b>Duration:</b> 4 months. <b>Location:</b> Sunshine.	

# Glossary

**Apprenticeship:** a pathway to becoming a qualified tradesperson that helps you earn while you learn. To undertake, you must be employed as an apprentice under a training agreement with an employer.

**ATAR:** Shown as a number between 30.00 and 99.95, ATAR is a ranking used by unis to help decide offers for school leavers.

**Conditional Offer:** An early offer that becomes final if you meet specific conditions, e.g. completing Year 12 and meeting prerequisites.

**Course code:** A short code that identifies a course (used in applications and enrolment). You'll see it on course pages and in VTAC listings.

**Credit points:** Count learning towards completing your course. At VU, most Higher Education subjects are 12 credit points. Credit can also be granted for prior learning or work experience.

**Double degree:** Two qualifications combined into one course plan (often shorter than studying them separately).

**Higher Education (HE):** Covers all uni-level study, including bachelor's degrees, honours, graduate certificates/diplomas and masters.

**Honours:** An extra year (or embedded component) with advanced study and research, usually after or within a bachelor's degree.

**Industry (location):** For selected programs, VU provides training to industry organisations in appropriate industry locations.

**Major:** Your main focus area within a bachelor's degree. You complete a set of subjects in that field to build deeper skills and knowledge.

**Online (self-paced or real-time):** a course delivery method for courses where you study some units online – either at your own pace or via scheduled live sessions.

**Pathways:** Flexible ways to enter courses at VU if you don't meet direct entry requirements, allowing you to move between TAFE and uni with recognition of your prior study, work or life experience.

**Postgraduate:** Study you do after an undergraduate degree, such as a Graduate Certificate, Graduate Diploma or Masters.

**Prerequisites:** VCE subjects you need to do to get into some courses. For example, to study biomedicine, you may need to have studied VCE biology, chemistry, maths or physics.

**Scored VCE:** You complete exams and receive an ATAR at the end of Year 12. This is a common way in to competitive uni courses (if you meet prerequisites too).

**Selection rank:** A sum of your ATAR and adjustment factors, e.g. folios, auditions, prerequisite subjects, special consideration and bonuses like VU Early Entry.

**Short courses:** Smaller, skill-focused courses designed for upskilling or trying an area before committing to a longer qualification.

**Study score:** A score (20–50) for a VCE subject that reflects how you performed compared to other students. Some courses require certain study scores as prerequisites.

**TAFE:** Practical, job-focused training ranging across Skillsets, Certificates I-IV, Diploma and Advanced Diploma programs.

**Traineeship:** a pathway to becoming a qualified tradesperson that helps you earn while you learn. To undertake, you must be employed as a trainee under a training agreement with an employer.

**Undergraduate:** Your first level of uni study, such as a bachelor's degree or an undergraduate certificate.

**Unscored VCE:** You complete VCE without scored exams and you won't receive an ATAR. It can suit students planning TAFE, work, or other pathways into further study.

**VCE Vocational Major (VM):** A hands-on VCE program focused on practical learning and workplace skills. It's designed for pathways into TAFE, apprenticeships, traineeships or work after school.

**VDSS:** Vocational Education and Training (VET) delivered to school students.

**VU Block Model:** VU's approach to most Higher Education courses where you focus on one subject at a time in 4–8 week blocks, rather than juggling several at once.

**VU Early Entry:** A uni preparation program for Year 11 or 12 students that includes a Conditional Offer and other benefits before results and main offer rounds.

**VU Online:** our online offering for some postgrad/undergrad courses – study 100% online with 1:1 dedicated academic support.

**WIL (Work Integrated Learning):** Study that includes real-world experience, like placements, internships, industry projects or simulations, so you build practical skills while you study.

Welcome to VU

The VU Block Model®

No one sees you like VU

VU Early Entry

Uniquely VU

Uni, your way

Health

Education

Law

Business

Cyber Security & IT

Sport

Trades

TAFE at VU

Meet your career co-captain

Your career journey

2027 courses

Glossary

[Our locations](#)

What next & how to apply

FAQs

Meet our grads

Join us at our 2026 Open Day

# Our locations

## Our main campuses & sites

With campuses across the west and the CBD, you'll find the facilities, industry connections and support to thrive.

[Click here to explore our VU campus videos](#)

◆ Melton Suburban University Study Hub



### City

*Wurundjeri Woiwurrung Country*

#### VU City Tower, 370 Little Lonsdale Street, Melbourne

Australia's largest vertical campus, the 32-level VU City Tower in Melbourne's CBD is purpose-built for modern learning, with flexible spaces, cutting-edge tech and student services right where you need them.

**You'll find:** collaborative classrooms, student-run health and beauty clinics, study spaces, IT support and student services, prayer room, the VU SAP Academy, student lounge and cafés.

**You'll study:** Business, Chiropractic Science, Criminology, Education, English, Hair & Beauty, Health, Massage, Osteopathy, Psychology.

#### 295 Queen Street

Next door to the VU City Tower, 295 Queen St is the home of our law faculty. This beautiful, historic building is filled with dedicated spaces to help you build practical skills, confidence and connections while you study.

**You'll find:** simulation moot courts, a specialised law library, prayer room.

**You'll study:** Law & Legal Practice.

**Industry partners on campus:** ICN (Industry Capability Network).



### Footscray Nicholson

*Wurundjeri Woiwurrung Country*

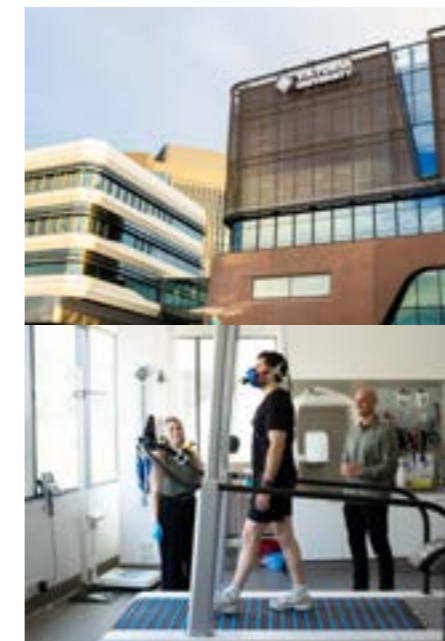
#### Corner of Nicholson & Buckley Streets, Footscray

A relaxed, friendly, TAFE-focused campus with modern facilities and student-run services. You'll find quiet spaces to study amongst a busy campus life, and build confidence on real projects as you learn.

**You'll find:** hospitality training restaurant (VenU), childcare training spaces, a student-run tax clinic, prayer room, a recreation centre with sports courts, and a study-friendly library.

**You'll study:** Business, Community Services, Cyber Security & IT, Early Childhood Education & Care, Event Management, Hospitality, Legal Practice, Music, School-Based Education & Support, Western Melbourne English Program.

**Industry partners on campus:** Western Chances, supporting young people in Melbourne's west.



### Footscray Park

*Wurundjeri Woiwurrung Country*

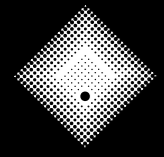
#### 70-104 Ballarat Road, Footscray

Our biggest campus sits alongside the Maribyrnong River and is connected by bridge to the new Footscray Hospital, home to a brand-new VU research building. Experience cutting-edge facilities and a vibrant campus community overlooking lush parklands.

**You'll find:** biomechanics labs, Aquatic and Fitness Centre, Altitude Hotel, engineering labs, a TV and broadcast studio, and pride room and prayer rooms. UniLodge Victoria University student accommodation is right across the road, and we're proudly embedded with the Western Bulldogs - with our VU High Performance Centre at Whitten Oval located just 2km away.

**You'll study:** Arts, Business, Built Environment, Community Services, Engineering, Education, Physiotherapy, Psychology, Science, Sport & Exercise Science.

**Industry partners on campus:** Western Health, plus Western Bulldogs at Whitten Oval.



# VICTORIA UNIVERSITY

## UNIQUELY YOU

Welcome to VU

The VU Block Model®

No one sees you like VU

VU Early Entry

Uniquely VU

Uni, your way

Health

Education

Law

Business

Cyber Security & IT

Sport

Trades

TAFE at VU

Meet your career co-captain

Your career journey

2027 courses

Glossary

Our locations

What next & how to apply

FAQs

Meet our grads

Join us at our 2026 Open Day



## St Albans

Wurundjeri Woiwurrung Country

### University Boulevard, St Albans

A hub for health, arts and science, you'll study on a calm, green campus with specialist facilities for hands-on learning, with industry partners and practical learning experiences on-site.

**You'll find:** health and nutrition labs, gym and sports courts, prayer rooms, and our Cyber Security Training Centre where you can tackle realistic cyber threat scenarios.

**You'll study:** Arts, Biomedical Sciences, Cyber Security & IT, Health, Midwifery, Nursing, Paramedicine, Western Melbourne English Program.

**Industry partners on campus:** Autism Spectrum Australia (Aspect) and Lifeline Western Melbourne.



## Sunshine

Wurundjeri Woiwurrung Country

### 438–460 Ballarat Road, Sunshine North

Home of trades, health and engineering, designed around practical learning in world-class facilities. You'll train in industry spaces and simulation labs that equip you with real skills and confidence.

**You'll find:** multi-million-dollar trades facilities, robotics and 3D-printing labs, a high-tech simulation nursing lab, a paramedic pod and prayer rooms. Plus, keep an eye out for two exciting new innovation hubs to be completed in 2026: Australia's first Centre of Excellence in Paramedicine and the Brimbank Tech School.

**You'll study:** Community Health, Construction, Electrical, Engineering, Fabrication, Nursing, Paramedicine, Plumbing, Signage, Western Melbourne English Program.

**Industry partners on campus:** Ambulance Victoria, Western Health.



## Werribee

Boonwurrung/Bunurong Country

### 235 Hoppers Lane, Werribee

A major hub for research, science, education and trades at VU. With specialised facilities for teaching, research and practical skills development, it's a great place to learn, train and make your mark.

**You'll find:** major scientific research labs, Werribee Children's Centre, trades facilities, a health and fitness centre, prayer room, and the Wyndham Tech School – where high school students explore future pathways in STEM.

**You'll study:** Biomedical Sciences, Community Health, Community Services, Construction, Criminal Justice, Early Childhood Education & Care, Education, Electrical, Engineering, Nursing, Plumbing, Western Melbourne English Program.

**Industry partners on campus:** Orygen and Parkville Youth Mental Health and Wellbeing Service.

## Our national campuses & sites

### VU Sydney

160–166 Sussex Street, Sydney, 2000, NSW

### VU Brisbane

269 Wickham Street, Fortitude Valley, 4006, QLD

Located in Sydney's CBD and Brisbane's Fortitude Valley, these vibrant campuses offer courses in education, business and information technology within welcoming, diverse student communities.

### Melton Suburban University Study Hub

31 McKenzie St, Melton, 3337, VIC

Opened in partnership with Melton City Council and Djerrirwarrh Community & Education Services, this dedicated study space helps local students stay on track with their uni or TAFE studies, closer to home. With free campus-style facilities, it offers quiet study areas and academic and wellbeing support.

## Our global locations

### VU India – Delhi NCR Campus

Our flagship international campus, VU India is located in Gurugram, in the Delhi National Capital Region. Delivering the VU Block Model in South Asia, students find strong industry links and pathways to continue studying in Australia.

### International delivery partner institutes

We work with leading institutions across Asia to deliver VU degrees in business, IT and more. As one of the largest providers of Australian qualifications outside Australia, we've been building transnational education partnerships in the region for over 20 years. Our partner institutes include:

- ◆ **Central University of Finance and Economics** – Beijing, China
- ◆ **Hanoi School of Business and Management** – Hanoi, Vietnam
- ◆ **Henan University** – Zhengzhou, China
- ◆ **Liaoning University** – Shenyang, China
- ◆ **National School of Business Management** – Homagama, Sri Lanka
- ◆ **Sunway College** – Kuala Lumpur and Johor Bahru, Malaysia

Welcome to VU

The VU Block Model®

No one sees you like VU

VU Early Entry

Uniquely VU

Uni, your way

Health

Education

Law

Business

Cyber Security & IT

Sport

Trades

TAFE at VU

Meet your career co-captain

Your career journey

2027 courses

Glossary

Our locations

What next & how to apply

FAQs

Meet our grads

Join us at our 2026 Open Day

# What next & how to apply



## FAQs

### How can I see what campus is actually like?

Come to VU Open Day in August! Tour our campuses, sit in on talks, chat to current students and staff, and get a feel for where you could be studying next year.

### I want a foot in the door before results – how?

If you're a Year 12 student, you can lock in a Conditional Offer with VU Early Entry – this secures your place in a VU course of your choice, as long as you meet entry requirements after exams.

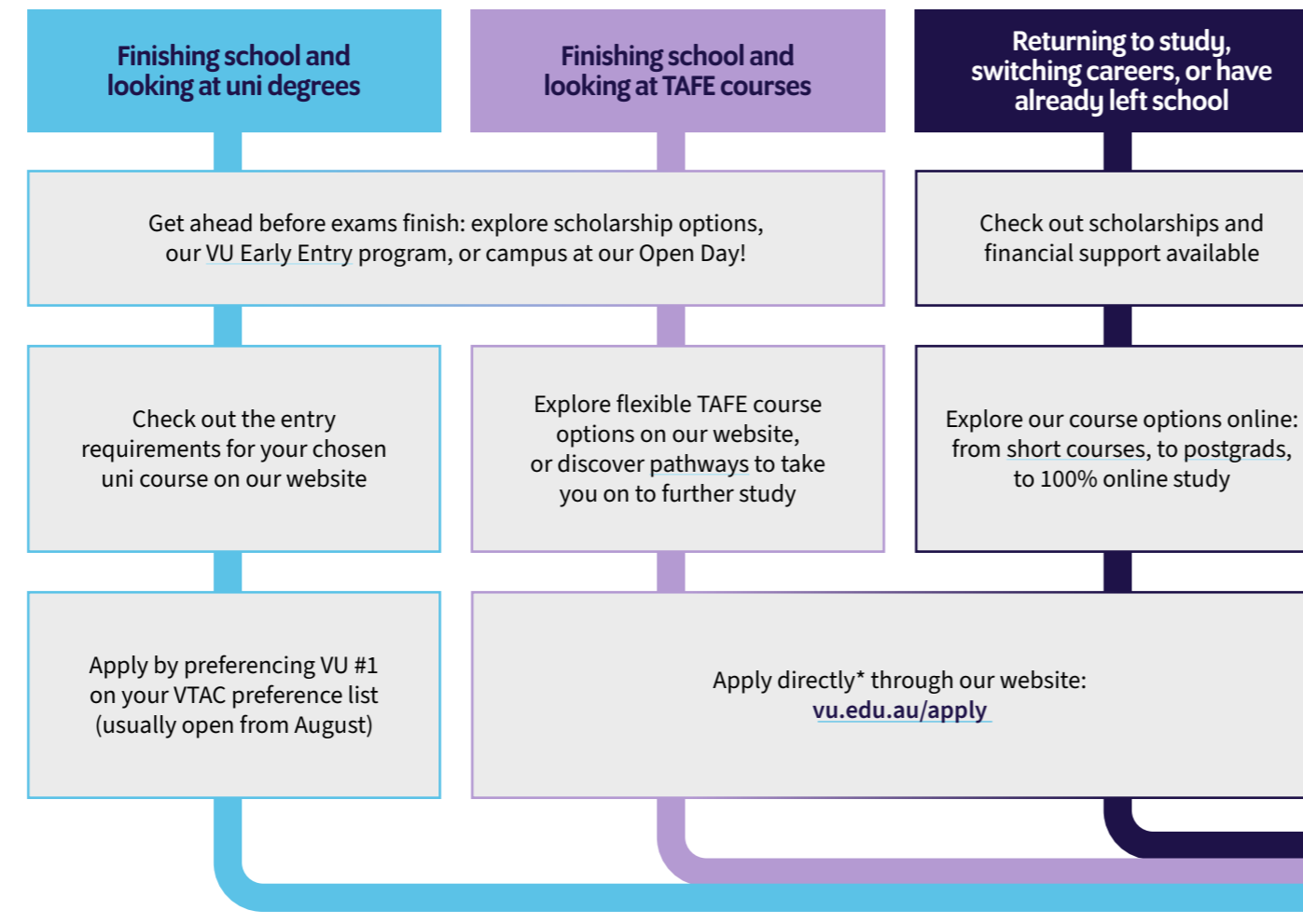
### How do VTAC preferences and offers work?

List courses in the order of preference, with #1 being the highest. VTAC will give you offers accordingly, based on your eligibility. So, if VU is your first choice, put us first!

### How do I know which courses I'm eligible for?

Use our handy ATAR search filter to browse courses you may be eligible for, including courses you might not have considered – many of which don't require ATAR. Head to: [vu.edu.au/search-atar](https://vu.edu.au/search-atar)

## I am...



\*Note: while most TAFE courses are apply direct, there are a few you'll need to preference via VTAC instead if you're finishing school – make sure you check your course page carefully for details and requirements.

## Need help? Contact us

If you need support, advice or questions answered, you can reach out to us – we're here to help make it easy for you.



### Email

[student.recruitment@vu.edu.au](mailto:student.recruitment@vu.edu.au)



### Call

[03 9919 6100](tel:0399196100)



### Enquire online:

[vu.edu.au/contact-us](https://vu.edu.au/contact-us)

## Ready to start?

Preference VU in VTAC from August or apply direct now

Apply now

# Meet our grads

Meet some inspiring VU alumni who have not only launched fulfilling careers but are making an impact in their fields – and shaping the future.

Welcome to VU

The VU Block Model®

No one sees you like VU

VU Early Entry

Uniquely VU

Uni, your way

Health

Education

Law

Business

Cyber Security & IT

Sport

Trades

TAFE at VU

Meet your career co-captain

Your career journey

2027 courses

Glossary

Our locations

What next & how to apply

FAQs

[Meet our grads](#)

Join us at our 2026 Open Day



**Ayden Shaw**

CEO,  
Disability Sports Australia

Studied: Bachelor of Sport Science (Human Movement)/Bachelor of Psychological Studies



**Laura Kane**

Executive Manager Football Operations,  
AFL

Studied: Bachelor of Laws (Honours)



**Josh Eastwell**

ANZ Logistics & Distribution Manager,  
Crocs

Studied: Bachelor of Business  
(Supply Chain & Logistics Management)



**Vince Lebon**

Founder, CEO & Head Designer,  
Rollie Nation

Studied: Advanced Diploma of Arts  
(Electronic Design & Interactive Media)



**Maggie Roberts**

CEO, Creative Factory & Director,  
AusTriathlon

Studied: Bachelor of Sport Science (Human Movement)/Bachelor of Sport Management



**Tahnee Towers**

Co-Chair, Young Indigenous Women  
in STEM Academy

Studied: Bachelor of Biomedical Science



**Adham Soliman**

Sustainability & Industrial Technology  
Graduate Program, Deloitte

Studied: Bachelor of Information Technology



**Asma Khan**

Information Security Officer,  
Greater Western Water

Studied: Certificate IV in Cyber Security

Welcome to VU

The VU Block Model®

No one sees you like VU

VU Early Entry

Uniquely VU

Uni, your way

Health

Education

Law

Business

Cyber Security & IT

Sport

Trades

TAFE at VU

Meet your career co-captain

Your career journey

2027 courses

Glossary

Our locations

What next & how to apply

FAQs

Meet our grads

Join us at our 2026 Open Day

## Preference VU #1

[Click here](#) to get the support you need to figure out your next move – even before exams.

# Join us at our 2026 Open Day

**Footscray Park**  
Sunday 16 August

**VU City Tower**  
Sunday 30 August

**Sunshine**  
Thursday 22 October

[Register now](#)

