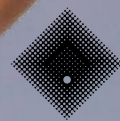


# INTERNATIONAL COURSES AND FEES LIST 2022

SANDHYA (MAURITIUS)  
Master of Digital Media



**VICTORIA  
UNIVERSITY**

MELBOURNE AUSTRALIA

THE NEW WAY TO DO UNI

# A WORLD-CLASS UNIVERSITY

VU is a world-class university. Our rankings, research, facilities, partnerships and alumni network are all part of our international reputation and are pillars for your success.

We are ranked in the top 2% of universities in the world, according to the *Times Higher Education* World University Rankings 2022. This ranking is the only international assessment of universities across their core missions of teaching, research, knowledge transfer and international outlook. We are also 63 in the world in the *Times Higher Education* Young University Rankings 2022.

We are 77 in the world for quality education, according to the *Times Higher Education* Impact Rankings 2021, for our contribution to early years and lifelong learning, our teaching research and our commitment to inclusive education.

VU offers world-class research opportunities, with 28 research disciplines ranked at or above world standard in the latest Excellence in Research for Australia (ERA) assessments. Our researchers develop new technologies and solve real-world problems, building smarter, healthier and more sustainable communities.

Our facilities including contemporary learning spaces, simulation labs, robotics, high-performance testing, industry-supported facilities such as the Cisco cybersecurity centre and the SAP Next Gen Lab, and the latest technology for vocational skills development.

Our international education partners include Liaoning University, Henan University and the Central University of Finance and Economics in China, Sunway College in Malaysia and the National School of Business Management in Sri Lanka.

Our alumni network of more than 260,000 includes 30,000 professionals living and working around the world, while employers of our alumni include the London Ambulance Service, Indonesia's Ministry of Finance, Facebook and NASA.

## A revolution in learning

At VU, our award-winning learning models have revolutionised tertiary education in Australia. With the VU Block Model, an Australian first, you focus on one or two subjects at a time, in small classes with the same educator for four or eight weeks, depending on your course. Each four-week or eight-week 'Block' includes all your assessments and results.

With a high level of academic support, the VU Block Model is designed to help you adjust to university study in Australia. International students perform particularly well under the Block Model, with a pass rate of 93%, and 55% of results being a distinction or above.

Victoria University Polytechnic, VU's vocational education division, combines engaging, user-friendly e-learning, with face-to-face training and support through its award-winning interactive e-learning model.

## Future-ready

Our graduates have the creative, problem solving and technical skills required to thrive in a fast-changing world. Practical learning, designed with our industry partners, is reinforced through industry application and supported by skills in communication, collaboration and leadership. Our teaching spaces are optimised for contemporary learning, including simulation labs with robotics, a high-tech A\$68 million sport and exercise science research facility, and a new 32-level tower scheduled to open in Melbourne's Central Business District (CBD) in 2022.

## Safe and supportive community

We are a welcoming and inclusive university in Australia's highest-ranked student city. Australia is also ranked the safest country in the world for women, according to the 2019 Global Wealth Migration Review. At VU, we celebrate cultural diversity and provide opportunities for all students to take part in community and social activities. We have more than 50 student clubs, programs to promote student leadership and activities to support community engagement. Our student advisers are always available to ensure you get the help you need, and the VU Safe app helps to keep you safe and secure.

TOP  
2%

**Times Higher Education** World University Rankings 2022.

TIER  
1

Our MBA is ranked Tier 1 by **CEO Magazine 2021**.

NUMBER  
1

VU graduates are the best in Australia for employability skills and number one in Victoria for collaborative, team, interpersonal, and technical skills.<sup>†</sup>

NUMBER  
10

We are 10 in the world for Peace, Justice and Strong Institutions (**Times Higher Education** Impact Rankings 2021).

NUMBER  
9

We are 9 in the world for Sport Science.\*

NUMBER  
37

We are 37 in the world for Automation and Control.\*

NUMBER  
77

We are 77 in the world for Quality Education (**Times Higher Education** Impact Rankings 2021).

NUMBER  
101-150

Our ranking globally in Computer Science and Engineering.\*

NUMBER  
151-200

Our global ranking for Hospitality and Tourism Management.\*



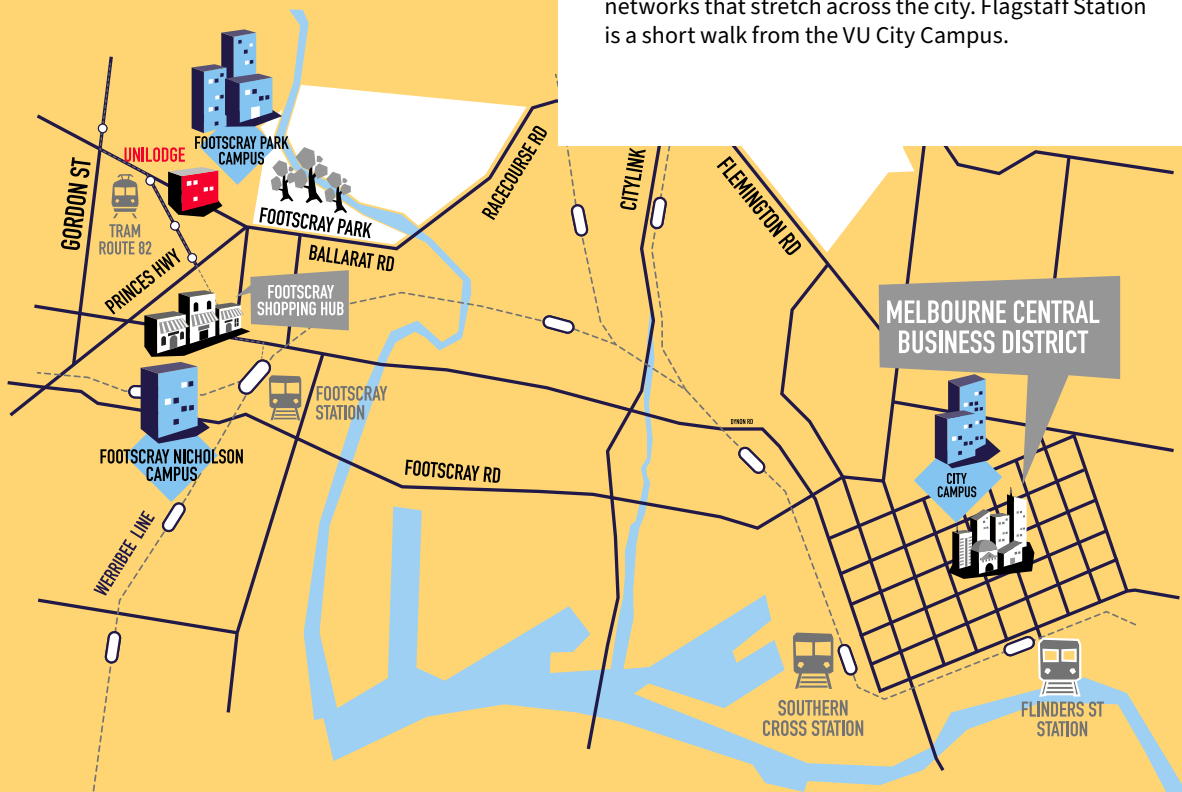
\* ShanghaiRanking Consultancy Global Ranking of Academic Subjects 2021

† 2020 QILT Employer Satisfaction Survey

# 5 REASONS TO CHOOSE MELBOURNE

## 1. EXTENSIVE PUBLIC TRANSPORT

Melbourne has an excellent public transport network that makes it safe, easy and affordable for students to travel to campus, work and around the city. All VU campuses are a short walk from public transport and our city campuses operate within Melbourne's free tram zone. Melbourne has extensive tram and train networks that stretch across the city. Flagstaff Station is a short walk from the VU City Campus.



## 2. AUSTRALIA'S BEST STUDENT CITY

Melbourne is the best student city in Australia and the sixth-best student city in the world, according to the QS Best Student Cities 2022. It is a vibrant, multicultural city and home to one of the world's most diverse student communities. Melbourne is full of the attractions that make the Australian lifestyle so appealing – beautiful beaches, friendly people and a fair proportion of sunny days!

Melbourne is renowned for its great restaurant and café options and its beautiful parks and boulevards. It is also one of the safest cities in the world (Economist Intelligence Unit Safe Cities Index 2019).



### 3. AUSTRALIA'S CULTURAL CAPITAL

Known as the cultural capital of Australia, Melbourne's annual calendar includes theatre, comedy, dance, art, film, fashion and a range of multicultural celebrations. Melbourne has more live music venues per capita than any other city in the world and hosts major international artists and performers. It also has incredible museums and is known as one of the world's leading street art cities, with many of its laneways acting as free open-air galleries.

[visitvictoria.com](http://visitvictoria.com)



### 4. WORLD-CLASS SPORT

Melbourne is one of the world's great sports cities and hosts some of the biggest and best events including the Australian Open (Grand Slam tennis), the Australian Formula 1 Grand Prix, the Melbourne Cup (horse racing), Australian Rules football (AFL) and international cricket matches. Our world-class sporting precinct includes the iconic Melbourne Cricket Ground, AAMI Park and Melbourne Park. There are also lots of community sports clubs and public sport facilities including cycling paths, basketball and tennis courts, and swimming pools.

### 5. FOOD FOR ALL TASTES

Cuisine from almost every part of the world can be found in Melbourne, with options to suit all budgets. Cuisines include Chinese, Indian, Vietnamese, Japanese, Korean, Sri Lankan, Malaysian, Thai, Spanish, Italian, Greek, French, Sudanese, Somali and Mexican. Many delights can be found in our local markets too. Queen Victoria Market is the biggest market of its kind in Australia with shops and stalls and even foodie tours, while Footscray Market offers everything from fresh vegetables and seafood to lotus flowers and cassava root!



# VU'S BLOCK MODEL: A REVOLUTION IN LEARNING

## WHAT IS THE BLOCK MODEL?

Unlike most other universities where you study multiple subjects at once, at VU you study one subject at a time for four weeks (undergraduate courses and some postgraduate courses) and two subjects at a time for eight weeks (postgraduate courses). Each four-week or eight-week 'block' includes all assessments, and your results are available after each block. You then have a few days between blocks to relax and prepare for the next subject.

The Block Model is unique to VU in Australia and is founded on the success of universities using similar models in Sweden, Canada and the United States.

## HOW IT WORKS

Your study mode of delivery will be organised in one of the following ways, depending on your course:

**4**

### FOUR-WEEK MODE

All undergraduate courses as well as postgraduate arts, education, health, biomedicine, sport and exercise.

**8**

### EIGHT-WEEK MODE

Postgraduate business courses and selected engineering and science courses.

Four-week mode means you study one unit (subject) at a time over four weeks. In eight-week mode you study two units at a time over eight weeks. All other postgraduate courses not listed above will be taught in the current course teaching periods (i.e. multiple units at the same time over the semester/trimester), until the VU Block Model is rolled out to all courses. Check your course page on the website for more details.



### INNOVATION AWARD

**IEAA Excellence Awards  
2018**



### EXCELLENCE AWARD

**Victorian International  
Education Awards 2018**



### TEACHING AWARD

**First Year College Block  
Model teachers**

**Universities Australia, Australian  
Awards for University Teaching  
2020**

## MULTIPLE STARTING POINTS

This table highlights our multiple optional entry points available to begin your course. You can start in Block 1, or fast-track or catch up on your studies by including Summer Blocks. We are reviewing our calendar to include more entry points, so check in later in the year for up-to-date information.

[vu.edu.au/timetables](https://vu.edu.au/timetables)

	SUMMER	SEMESTER 1				WINTER	SEMESTER 2				SUMMER	
DATES	17 JAN	21 FEB	21 MAR	26 APR	23 MAY	27 JUN	1 AUG	23 SEP	3 OCT	31 OCT	28 NOV	2023
4-WEEK BLOCKS	SUMMER	<b>Block 1</b> 4 weeks 1 unit	<b>Block 2</b> 4 weeks 1 unit	<b>Block 3</b> 4 weeks 1 unit	<b>Block 4</b> 4 weeks 1 unit	WINTER	<b>Block 1</b> 4 weeks 1 unit	<b>Block 2</b> 4 weeks 1 unit	<b>Block 3</b> 4 weeks 1 unit	<b>Block 4</b> 4 weeks 1 unit	BREAK	
8-WEEK BLOCKS	BREAK	<b>Block 1</b> 8 weeks 2 units		<b>Block 2</b> 8 weeks 2 units		BREAK	<b>Block 3</b> 8 weeks 2 units		<b>Block 4</b> 8 weeks 2 units		<b>Block 5</b> 8 weeks 2 units	

## SUPPORT FOR YOUR FIRST YEAR AT UNI

VU is the only university in Australia to have a First Year College, made up of specialist educators and programs to guide and support your transition to uni.

In first year, alongside coursework, you'll complete Study Essentials – a program designed to help you gain the skills required for success such as research and writing.

With this support and collaborative approach, it's no wonder our First Year College won an Australian Award for University Teaching (AAUT) in 2020, and that students rank us #1 in Victoria (#3 in Australia)\* for learner engagement.

In subsequent years you'll complete Course Essentials and Career Essentials, which offer customised support through practical learning activities, and assist you to find employment in your chosen field. For more information about learning support, visit [vu.edu.au/learning-hubs](https://vu.edu.au/learning-hubs)

For more information about the First Year College, visit [vu.edu.au/fyc](https://vu.edu.au/fyc)

### THE VU BLOCK MODEL

Watch at [vu.edu.au/block-model](https://vu.edu.au/block-model)



\* 2020 QILT Student Experience Survey

# SUCCESS IN YOUR STUDIES

#1

IN AUSTRALIA  
FOR STUDENT  
EMPLOYABILITY\*

#2

IN AUSTRALIA  
FOR ADAPTIVE &  
COLLABORATIVE SKILLS\*

#3

IN AUSTRALIA  
FOR LEARNER  
ENGAGEMENT#

## WHY IS VU'S BLOCK MODEL BETTER FOR YOU?

### Improved academic success

The progression of subjects in the Block Model will give you early feedback and success. Since the introduction of the Block Model in 2018, international students have performed particularly well, achieving a pass rate of 93%, with 55% of those results a distinction or above.

### Small classes

You learn in smaller classes and have more one-on-one time with your educators. Studying with one group at a time will help you to adjust to university life in Australia and form better connections with your classmates and mentors. Plus, this will help you gain more confidence to be able to share ideas and debate concepts.

### Flexibility

Teaching sessions are available in multiple combinations (morning, mid-morning, afternoon and evening), allowing you to plan your work and other activities. We also have multiple entry points and the option to fast-track or catch up on your studies during our winter and summer blocks.

### Simple timetables

The study year for undergraduate courses is divided into 10 four-week blocks: two semesters of four blocks each, plus

two optional blocks over winter and summer. Each unit has three face-to-face teaching sessions per week, scheduled over three days. Teaching sessions don't run on more than two consecutive days, so you will have one gap day between teaching sessions and two gap days each week. Subjects with labs and professional experience, called 'pracs', have extra teaching hours and are scheduled on the same days as teaching sessions. If you are studying a postgraduate program, you will participate in two workshops per week (one to two hours long) for six weeks, followed by a three-hour workshop in Week 7 and a break in Week 8 for reflection.

### Early feedback

Assessments have been redesigned for quicker completion within each block, with most of your work completed in class so you can achieve your best through early and ongoing feedback. You'll have a great sense of how you're progressing in your course, with final grades for units available soon after each block finishes.

93%

PASS RATE

55%

ABOVE  
DISTINCTION  
LEVELS

#1

IN VICTORIA FOR  
OVERALL STUDENT  
EXPERIENCE^

\* 2020 QILT Employer Satisfaction Survey

# 2020 QILT Student Experience Survey

^ 2020 QILT Employer Satisfaction Survey for commencing undergraduate students

# ACCOMMODATION

VU offers safe, modern, friendly and fully furnished on-campus student accommodation. It's the perfect home away from home.

## UniLodge Victoria University

VU offers guaranteed accommodation to new and continuing international students, in partnership with UniLodge. This purpose-built, 537-bed student accommodation complex is safe, secure and affordable. It features high-tech study rooms, gourmet kitchens, dining rooms and TV lounges, a barista café, convenience store and rooftop garden, as well as a basketball half-court, BBQ, pool table and table tennis table. There's also a cinema room with access to Foxtel services, gaming consoles and media players.

UniLodge is next to our Footscray Park Campus. It's just a short walk from our Footscray Nicholson Campus and the Footscray Railway Station, which is a 12-minute trip to the centre of Melbourne and our City Flinders Campus.

UniLodge features fully-furnished twin-share studio apartments from A\$150 per week, as well as two and six-bedroom apartments. There is unlimited WiFi, membership to our Residential Life Program and all utilities are included in the cost. It's the perfect option for students wanting to make friends in a safe and supportive environment, while enjoying the convenience of being close to our key campuses.

[vu.edu.au/accommodation-guarantee](http://vu.edu.au/accommodation-guarantee)

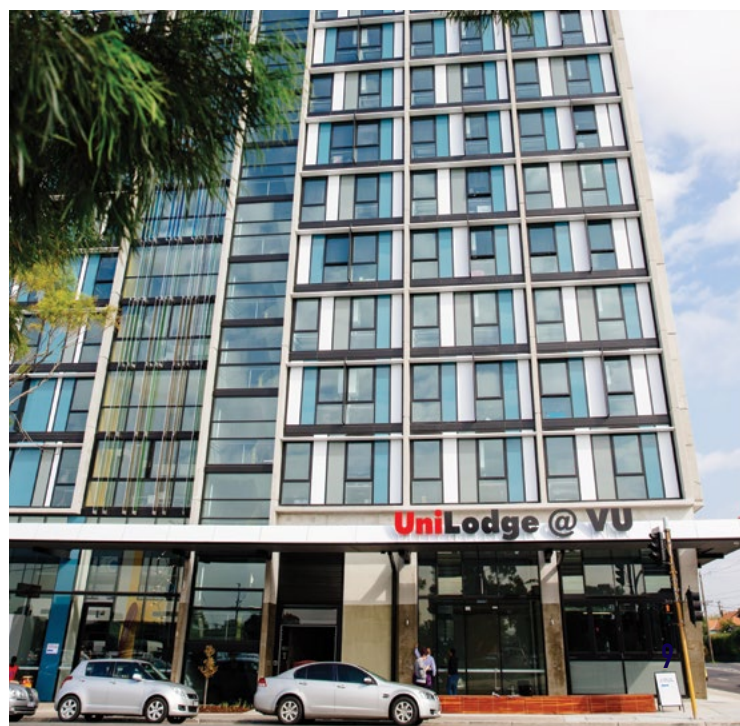
## VU Student Housing Service

Once you arrive in Australia, our student housing service can provide:

- access to the VU student housing database – a free online guide with a list of property vacancies
- a student housing guide with tips, checklists and links
- information about moving in, staying, and moving out of your rental property
- rental information in multiple languages
- support with housing issues.

We recommend booking accommodation before you arrive in Australia, at least for the first few weeks. An inspection should be conducted before agreeing to a long-term private rental or share house arrangement.

[vu.edu.au/housing](http://vu.edu.au/housing)



# FEES & LIVING COSTS

Before you start your studies, it's a great idea to prepare a budget based on your lifestyle and accommodation choices.

## TUITION FEES

Your tuition fees will be outlined in your offer letter. Fees are charged one semester at a time and are payable before the semester starts. Tuition fees vary by course and may change.

## STUDY COSTS

You might need to buy equipment, textbooks or clothing such as a uniform, for some courses. These costs are separate from your tuition fees. Allow approximately A\$650 for books and stationery each year, plus any compulsory equipment or uniforms.

Other possible study costs include:

- travel to work placements
- graduation ceremony costs
- library expenses (printing/scanning/photocopying).

## LIVING COSTS

As a condition of your student visa you must have enough money to pay the costs of your stay, including your travel and living expenses.

As of October 2019, the 12-month living costs set by the Australian Government are:

- student or guardian – A\$21,041
- accompanying partner or spouse – A\$7362
- accompanying child – A\$3152.

[studyinaustralia.gov.au](http://studyinaustralia.gov.au)

- Shared rental – \$95 to \$215 per week
- On-campus at UniLodge Victoria University – \$150 to \$378 per week
- Homestay – \$235 to \$325 per week
- Rental – \$185 to \$440 per week.

## Other living expenses

- Groceries and eating out – \$140 to \$280 per week
- Gas, electricity – \$10 to \$20 per week
- Phone and Internet – \$15 to \$30 per week
- Car (after purchase) – \$150 to \$260 per week
- Entertainment – \$80 to \$150 per week.

[studyinaustralia.gov.au](http://studyinaustralia.gov.au)

The Insider Guide's Cost of Living Calculator is another useful way to help estimate your costs in Australia.

[insiderguides.com.au/cost-of-living](http://insiderguides.com.au/cost-of-living)

## HEALTH INSURANCE

You must have Overseas Student Health Cover (OSHC) to obtain a student visa. Victoria University can arrange your OSHC for you, which gives you extra benefits over any policy that you can purchase directly. If you would like us to organise cover for you, it will be purchased through Medibank, our preferred supplier. Medibank exclusively offers Comprehensive OSHC to their education partners, and cannot be purchased through other channels. It meets the student visa requirements for all course types and provides a range of added value services that cannot be purchased separately, and are above the Australian Federal Government's minimum requirements.

[medibank.com.au/overseas-health-insurance/oshc/comprehensive-oshc/](http://medibank.com.au/overseas-health-insurance/oshc/comprehensive-oshc/)

[vu.edu.au/health-cover](http://vu.edu.au/health-cover)



# COURSE AND FEES INDEX<sup>^</sup>

Course Code	Course Title	CRICOS code	Intake <sup>^^</sup>	Duration (semesters)	Campus	IELTS	A\$ fee per semester	Page
<b>FOUNDATION STUDIES</b>								
JQAG	International Foundations at VU	096078F	2,3	2 (trimesters)	FP <sup>i</sup> , CC <sup>**</sup>	5.5 (5.0)	\$11,000	20
JQAH	International Foundations at VU (Extended)	096079E	1,2	3 (trimesters)	FP <sup>i</sup> , CC <sup>**</sup>	5.0 (5.0)	\$11,000	20
<b>ARTS</b>								
<b>UNDERGRADUATE</b>								
ABAB	Bachelor of Arts	068927B	1,2	6	FP	6.0 (6.0)	\$12,800	24
ABMC	Bachelor of Music	077998A	1,2	6	FP	6.0 (6.0)	\$12,800	24
ABSN	Bachelor of Screen Media	092157F	1,2	6	FP	6.0 (6.0)	\$12,800	25
<b>POSTGRADUATE COURSEWORK</b>								
ATDM	Graduate Certificate in Digital Media	083300A	1,2	1	CF <sup>i</sup> , CC <sup>**</sup>	6.5 (6.0)	\$14,000	117
AGDM	Graduate Diploma in Digital Media	083305G	1,2	2	CF <sup>i</sup> , CC <sup>**</sup>	6.5 (6.0)	\$14,000	117
AMDM	Master of Digital Media	083302K	1,2	4	CF <sup>i</sup> , CC <sup>**</sup>	6.5 (6.0)	\$14,000	25
<b>BUSINESS</b>								
<b>HIGHER EDUCATION DIPLOMAS</b>								
VD BE	Diploma of Business (Enterprise)	075552C	1,2	2	CF <sup>i</sup> , CC <sup>**</sup>	5.5 (5.0)	\$11,300	28
<b>UNDERGRADUATE</b>								
BBNS	Bachelor of Business	092944A	1,2	6	CF <sup>i</sup> , FP <sup>i</sup> , CC <sup>**</sup>	6.0 (6.0)	\$14,900	29
<b>POSTGRADUATE COURSEWORK</b>								
BGAB	Graduate Diploma in Business	103279A	1,2,3	1	CF <sup>i</sup> , CC <sup>**</sup>	6.5 (6.0)	\$15,500	117
BGPB	Graduate Diploma in Business Administration	091513K	1,2,3	2	CF <sup>i</sup> , CC <sup>**</sup>	6.5 (6.0)	\$16,700	117
BMAQ	Master of Professional Accounting	103254K	1,2,3	4	CF <sup>i</sup> , CC <sup>**</sup>	6.5 (6.0)	\$15,500	31
BMBU	Master of Business Analytics	103256H	1,2,3	4	CF <sup>i</sup> , CC <sup>**</sup>	6.5 (6.0)	\$15,500	32
BMEN	Master of Enterprise Resource Planning	103257G	1,2,3	4	CF <sup>i</sup> , CC <sup>**</sup>	6.5 (6.0)	\$15,500	32
BMSU	Master of Supply Chain Management	103521G	1,2,3	4	CF <sup>i</sup> , CC <sup>**</sup>	6.5 (6.0)	\$15,500	33
BMAG	Master of Business Administration (Global)	103253M	1,2,3	4	CF <sup>i</sup> , CC <sup>**</sup>	6.5 (6.0)	A16,700	31

**CAMPUSES:** CC – CITY CAMPUS   CF – CITY FLINDERS   CK – CITY KING   CQ – CITY QUEEN   FN – FOOTSCRAY NICHOLSON   FP – FOOTSCRAY PARK  
SA – ST ALBANS   SS – SUNSHINE   W – WERRIBEE

**NOTE:** <sup>^</sup>Information and fees listed above are for international students commencing a course in 2022. Fees are subject to approval and may change. For some courses, equipment and clothing is required at an additional cost to the course fees listed in this guide, and we recommend you check the website. <sup>^^</sup>Intakes are February/March (1), July/August (2) and October/November (3). <sup>^^^</sup>IELTS requirement is based on academic test module (overall score, no band less than). <sup>\*</sup>All research fees are indicative and depend on field of research studied. <sup>\*\*</sup>From April 2022. <sup>†</sup>February 2022 only. <sup>‡</sup>Entry requires HBSO as a prerequisite. <sup>‡‡</sup>Entry requires CHC30113 as a prerequisite. <sup>\$</sup>High-achieving students in NBIT will be eligible to transfer into NBIT to take part in a 12-month paid IT internship. Visit [vu.edu.au/bachelor-of-it-professional-placement-scholarship-application](https://vu.edu.au/bachelor-of-it-professional-placement-scholarship-application) for more information. Entry requirements, fees, and CRICOS information in this guide are for courses at VU campuses in Melbourne only.

# COURSE AND FEES INDEX

Course Code	Course Title	CRICOS code	Intake**	Duration (semesters)	Campus	IELTS	A\$ fee per semester	Page
<b>EDUCATION</b>								
<b>TAFE CERTIFICATES &amp; DIPLOMAS</b>								
CHC30113	CHC30113 Certificate III in Early Childhood Education and Care	098078A	1, 2	1	FN	5.5 (5.0)	\$7,300	36
CHC50113 <sup>††</sup>	CHC50113 Diploma of Early Childhood Education and Care	085044G	1, 2	2	FN	5.5 (5.0)	\$7,300	36
<b>HIGHER EDUCATION DIPLOMAS</b>								
EDES	Diploma of Education Studies	074359A	1, 2	2	FN	6.0 (6.0)	\$11,600	38
<b>UNDERGRADUATE</b>								
EUEC	Undergraduate Certificate in Early Childhood Education	105912J	1	1	FP	6.5 (6.0)	\$10,600	118
EBEC	Bachelor of Early Childhood Education	096869G	1, 2	6	FP <sup>†</sup> , CC <sup>††</sup>	6.5 (6.0)	\$13,700	37
EBCL	Bachelor of Early Childhood Education and Leadership	105139H	1, 2	8	FP <sup>†</sup> , CC <sup>††</sup>	6.5 (6.0)	\$13,700	37
EBED	Bachelor of Education (P-12)	071581G	1, 2	8	FP	7.0 (L&S 7.5, R&W 6.5)	\$13,700	38
EBST	Bachelor of Education Studies	093862F	1, 2	6	FP	6.0 (6.0)	\$13,700	38
<b>POSTGRADUATE COURSEWORK</b>								
ETED	Graduate Certificate in Education	083308D	1, 2	1	FP	6.5 (6.0)	\$13,700	118
EGED	Graduate Diploma in Education	083311J	1, 2	2	FP	6.5 (6.0)	\$13,700	118
EGEC	Graduate Diploma in Early Childhood Education	0101340	1, 2	2	FN <sup>†</sup> , CC <sup>††</sup>	7.0 (L&S 7.5, R&W 6.5)	\$13,700	39
EMED	Master of Education	083310K	1, 2	4	FP	6.5 (6.0)	\$13,700	39
EMPE	Master of Teaching (Primary Education)	083309C	1, 2	4	FN	7.0 (L&S 7.5, R&W 6.5)	\$13,700	40
EMES	Master of Teaching (Secondary Education)	084111J	1, 2	4	FN	7.0 (L&S 7.5, R&W 6.5)	\$13,700	41
<b>ENGINEERING AND SCIENCE</b>								
<b>HIGHER EDUCATION DIPLOMAS</b>								
VDEN	Diploma of Engineering	088602B	1, 2	2	CF <sup>†</sup> , CC <sup>††</sup>	5.5 (5.0)	\$14,600	44
<b>UNDERGRADUATE</b>								
NHCM	Bachelor of Construction Management (Honours)	096487M	1, 2	8	FP	6.0 (6.0)	\$15,500	46
NBBD	Bachelor of Building Design	096484C	1, 2	6	FP	6.0 (6.0)	\$15,500	45
NHEA	Bachelor of Engineering (Honours) (Architectural Engineering)	084872A	1, 2	8	FP	6.0 (6.0)	\$17,800	46
NHEC	Bachelor of Engineering (Honours) (Civil Engineering)	084873M	1, 2	8	FP	6.0 (6.0)	\$17,800	47
NHEE	Bachelor of Engineering (Honours) (Electrical and Electronic Engineering)	084874K	1, 2	8	FP	6.0 (6.0)	\$17,800	47
NHEM	Bachelor of Engineering (Honours) (Mechanical Engineering)	084875J	1, 2	2	FP	6.0 (6.0)	\$17,800	48
<b>POSTGRADUATE COURSEWORK</b>								
NGPM	Graduate Diploma in Project Management	084871B	1, 2	4	FP	6.5 (6.0)	\$16,100	118
NMEN	Master of Engineering	084876G	1, 2	4	FP	6.5 (6.0)	\$18,250	49
NMPM	Master of Project Management	083306F	1, 2	4	FP	6.5 (6.0)	\$16,100	49

# COURSE AND FEES INDEX

Course Code	Course Title	CRICOS code	Intake <sup>^^</sup>	Duration (semesters)	Campus	IELTS	A\$ fee per semester	Page
<b>HEALTH, PSYCHOLOGY AND DERMAL SCIENCES</b>								
<b>TAFE DIPLOMAS</b>								
HLT54115	HLT54115 Diploma of Nursing	092570D	1, 2	4	SA	7.0 (7.0)	\$9,200	53
SHB50115	SHB50115 Diploma of Beauty Therapy	089066B	1	2	CK	5.5 (5.0)	\$7,300	54
<b>UNDERGRADUATE</b>								
HBHL	Bachelor of Health Science	092156G	1	6	SA	6.0 (6.0)	\$16,700	56
HBNT	Bachelor of Human Nutrition	096482E	1	6	FP	6.0 (6.0)	\$14,900	56
HBBS	Bachelor of Biomedical Science	092499F	1	6	SA	6.0 (6.0)	\$15,800	55
HBES	Bachelor of Biomedical and Exercise Science	096481F	1	6	FP, SA	6.0 (6.0)	\$15,800	58
HBNB	Bachelor of Nursing	080229E	1	6	SA	7.0 (7.0)	\$16,500	53
HBMA	Bachelor of Midwifery/Bachelor of Nursing	105376F	1	8	SA	7.0 (7.0)	\$16,750	54
HBPD	Bachelor of Paramedicine	092160M	1	6	SA	6.0 (6.0)	\$15,800	57
ABPA	Bachelor of Psychological Studies	071141K	1, 2	6	FP	6.0 (6.0)	\$14,500	58
ABPB	Bachelor of Psychological Studies / Bachelor of Business	075219E	1, 2	8	FP	6.0 (6.0)	\$14,900	119
LBCP	Bachelor of Criminology/Bachelor of Psychological Studies	102921K	1, 2	8	CQ, FP	6.0 (6.0)	\$14,900	69
HBSO	Bachelor of Science (Osteopathy)	088781E	1	6	CF <sup>†</sup> , CC <sup>††</sup>	6.5 (6.0)	\$19,000	119
HBDS	Bachelor of Dermal Sciences	092158E	1	8	CQ <sup>‡</sup> , CC <sup>††</sup>	6.0 (6.0)	\$16,500	55
HBBM	Bachelor of Biomedicine	084869G	1	6	FP, SA	7.0 (6.5)	\$17,000	119
AHPA	Bachelor of Psychological Studies (Honours)	071137F	1	2	FP	6.5 (6.0)	\$14,500	119
ABPC	Bachelor of Psychology (Honours)	077996C	1, 2	8	FP, SA	6.0 (6.0)	\$14,500	59
SHBM	Bachelor of Science (Honours) (Biomedical Sciences)	015074C	1	2	FP, SA	6.5 (6.0)	\$15,800	119
ABCY	Bachelor of Youth Work and Criminal Justice	095830J	1, 2	6	FP	6.0 (6.0)	\$12,800	119
<b>POSTGRADUATE COURSEWORK</b>								
HTGP	Graduate Certificate in Global Public Health	107825C	1	1	SA <sup>†</sup> , CC <sup>††</sup>	6.5 (6.0)	\$15,500	119
AMPE	Master of Counselling	042907J	1	4	CF <sup>†</sup> , CC <sup>††</sup>	6.5 (6.0)	\$14,300	60
HMGP	Master of Global Public Health	107823E	1	4	SA <sup>†</sup> , CC <sup>††</sup>	6.5 (6.0)	\$15,500	60
HMHO <sup>‡</sup>	Master of Health Science (Osteopathy)	090621C	1	3	CF <sup>†</sup> , CC <sup>††</sup>	6.5 (6.0)	\$15,800	119
HMPP	Master of Professional Psychology	103252A	1	2	FN	6.5 (6.0)	\$16,250	119
<b>INFORMATION TECHNOLOGY AND SYSTEMS</b>								
<b>HIGHER EDUCATION DIPLOMAS</b>								
VDIT	Diploma of Information Technology	077776D	1, 2	2	FN	5.5 (5.0)	\$13,400	64
<b>UNDERGRADUATE</b>								
NBIT <sup>§</sup>	Bachelor of Information Technology	071997F	1, 2	6	FP	6.0 (6.0)	\$15,200	64
NBIP	Bachelor of Information Technology (Professional)	096870D	<sup>††</sup>	7	FP	6.0 (6.0)	\$15,200	119
NBCS	Bachelor of Cyber Security	103891C	1, 2	6	FP	6.0 (6.0)	\$15,200	65
<b>POSTGRADUATE COURSEWORK</b>								
NTCS	Graduate Certificate in Cyber Security	105066J	1, 2	1	FP	6.5 (6.0)	\$15,500	119
NGCS	Graduate Diploma in Cyber Security	103292D	1, 2	2	FP	6.5 (6.0)	\$15,500	119
NMIT	Master of Applied Information Technology	083307E	1, 2	4	FP <sup>†</sup> , CC <sup>††</sup>	6.5 (6.0)	\$15,500	65

**CAMPUSES:** CC – CITY CAMPUS   CF – CITY FLINDERS   CK – CITY KING   CQ – CITY QUEEN   FN – FOOTSCRAY NICHOLSON   FP – FOOTSCRAY PARK  
SA – ST ALBANS   SS – SUNSHINE   W – WERRIBEE

**NOTE:** <sup>†</sup>Information and fees listed above are for international students commencing a course in 2022. Fees are subject to approval and may change. For some courses, equipment and clothing is required at an additional cost to the course fees listed in this guide, and we recommend you check the website. <sup>^^</sup>Intakes are February/March (1), July/August (2) and October/November (3). <sup>^^^</sup>IELTS requirement is based on academic test module (overall score, no band less than). <sup>\*</sup>All research fees are indicative and depend on field of research studied. <sup>\*\*</sup>From April 2022. <sup>†</sup>February 2022 only. <sup>‡</sup>Entry requires HBSO as a prerequisite. <sup>††</sup>Entry requires CHC30113 as a prerequisite. <sup>§</sup>High-achieving students in NBIT will be eligible to transfer into NBIP to take part in a 12-month paid IT internship. Visit [vu.edu.au/bachelor-of-it-professional-placement-scholarship-application](http://vu.edu.au/bachelor-of-it-professional-placement-scholarship-application) for more information. Entry requirements, fees, and CRICOS information in this guide are for courses at VU campuses in Melbourne only.

# COURSE AND FEES INDEX

Course Code	Course Title	CRICOS code	Intake**	Duration (semesters)	Campus	IELTS	A\$ fee per semester	Page
<b>LAW AND JUSTICE</b>								
<b>UNDERGRADUATE</b>								
ABCJ	Bachelor of Criminal Justice	088599C	1, 2	6	FP	6.0 (6.0)	\$12,800	71
ABCY	Bachelor of Criminal Justice and Psychological Studies	095830J	1, 2	6	FP	6.0 (6.0)	\$12,800	120
BLAW	Bachelor of Laws	040190B	1, 2	8	CQ	6.5 (6.0)	\$14,900	68
BLGE	Bachelor of Laws (Graduate Entry)	041647K	1, 2	6	CQ	6.5 (6.0)	\$14,900	69
LBCR	Bachelor of Criminology	102415F	1, 2	6	CQ	6.5 (6.0)	\$13,400	70
LHCR	Bachelor of Laws/ Bachelor of Criminology	107822F	1, 2	9	CQ	6.5 (6.0)	\$14,900	70
<b>POSTGRADUATE COURSEWORK</b>								
LGML	Graduate Diploma in Migration Law	096290B	1, 2	2	CQ	6.5 (6.0)	\$16,100	71
<b>SOCIAL WORK, COMMUNITY AND YOUTH DEVELOPMENT</b>								
<b>UNDERGRADUATE</b>								
ABCD	Bachelor of Community Development	088782D	1, 2	6	FP	6.0 (6.0)	\$12,000	75
ABSW	Bachelor of Social Work	077997B	1	8	FP	7.0 (7.0)	\$13,400	74
ABYW	Bachelor of Youth Work	074356D	1, 2	6	FP	6.0 (6.0)	\$12,800	74
<b>POSTGRADUATE COURSEWORK</b>								
ATID	Graduate Certificate in International Community Development	061978C	1, 2	1	FP	6.5 (6.0)	\$12,200	120
AGID	Graduate Diploma in International Community Development	085260K	1, 2	2	FP	6.5 (6.0)	\$12,200	120
AMCD	Master of International Community Development	083312G	1, 2	4	FP	6.5 (6.0)	\$12,200	75
<b>SPORT AND EXERCISE SCIENCE</b>								
<b>UNDERGRADUATE</b>								
ABHD	Bachelor of Exercise Science (Sport Practice)	084833G	1, 2	6	FP	6.0 (6.0)	\$16,000	79
ABHE	Bachelor of Exercise Science (Clinical Practice)	084834G	1, 2	6	FP	6.0 (6.0)	\$16,000	79
SBOL	Bachelor of Outdoor Leadership	099055M	1, 2	6	FP	6.0 (6.0)	\$15,500	80
SBSM	Bachelor of Sport Management	084881M	1, 2	6	FP	6.0 (6.0)	\$16,000	78
SBSA	Bachelor of Sport Science	096485B	1, 2	6	FP	6.0 (6.0)	\$14,600	80
SBHP	Bachelor of Sport Science (Human Movement) /Bachelor of Psychological Studies	084877G	1, 2	8	FP	6.0 (6.0)	\$14,900	120
SBSB	Bachelor of Sport Management / Bachelor of Business	084880A	1, 2	8	FP	6.0 (6.0)	\$14,600	82
SBPH	Bachelor of Physical Education and Sport Science	088601C	1, 2	6	FP	6.0 (6.0)	\$15,500	82
SBHS	Bachelor of Sport Science (Human Movement) /Bachelor of Sport Management	084878F	1, 2	8	FP	6.0 (6.0)	\$14,600	120
<b>POSTGRADUATE COURSEWORK</b>								
AMEP	Master of Clinical Exercise Science and Rehabilitation	077582C	1, 2	3	FP	6.5 (6.0)	\$15,800	83
SMBS	Master of Sport Business	103438B	1, 2	3	FP <sup>i</sup> , CC <sup>ii</sup>	6.5 (6.0)	\$19,100	83

# COURSE AND FEES INDEX

Course Code	Course Title	CRICOS code	Intake <sup>^^</sup>	Duration (semesters)	Campus	IELTS	A\$ fee per semester	Page
<b>TOURISM, HOSPITALITY AND EVENTS</b>								
<b>TAFE CERTIFICATES &amp; DIPLOMAS</b>								
SIT30816	SIT30816 Certificate III in Commercial Cookery	095616D	1, 2	2	FN	5.5 (5.0)	\$6,300	86
SIT40516	SIT40516 Certificate IV in Commercial Cookery	0100178	1, 2	3	FN	5.5 (5.0)	\$6,300	86
SIT50416	SIT50416 Diploma of Hospitality Management	095617C	1, 2	2	FN	5.5 (5.0)	\$6,300	86
SIT60316	SIT60316 Advanced Diploma of Hospitality Management	095618B	1, 2	3	FN	5.5 (5.0)	\$6,300	87
VAHH	Associate Degree in Hospitality and Hotel Management	0100454	1, 2	4	FN	6.0 (6.0)	\$8,500	87
<b>RESEARCH</b>								
UPAD	Doctor of Philosophy	064447F	1, 2	8	CF <sup>†</sup> , CQ, FP, SA, WB, CC <sup>**</sup>	6.5 (6.0)	\$15,500 - \$18,100*	94
UPAF	Doctor of Philosophy	064447F	1, 2	8	CF <sup>†</sup> , CQ, FP, SA, WB, CC <sup>**</sup>	6.5 (6.0)	\$15,500 - \$18,100*	94
UPAE	Doctor of Philosophy (Integrated)	099052C	1, 2	8	CF <sup>†</sup> , CQ, FP, SA, WB, CC <sup>**</sup>	6.5 (6.0)	\$15,500 - \$17,800*	94
UPAG	Doctor of Philosophy (Integrated)	099052C	1, 2	8	CF <sup>†</sup> , CQ, FP, SA, WB, CC <sup>**</sup>	6.5 (6.0)	\$15,500 - \$17,800*	94
URAR	Master of Applied Research	099077E	1, 2	4	CF, FP, SA, WB	6.5 (6.0)	\$13,200 - \$17,900*	95
URAP	Master of Applied Research	099078D	1, 2	4	CF, FP, SA, WB	6.5 (6.0)	\$13,200 - \$17,900*	95
URRE	Master of Research	099079C	1, 2	3	CF, FP, SA, WB	6.5 (6.0)	\$13,200 - \$17,900*	95
URRS	Master of Research	099080K	1, 2	3	CF, FP, SA, WB	6.5 (6.0)	\$13,200 - \$17,900*	95
URPR	Master of Research Practice	099081J	1, 2	2	CF, FP, SA, WB	6.5 (6.0)	\$13,200 - \$17,900*	95
URPC	Master of Research Practice	099082G	1, 2	2	CF, FP, SA, WB	6.5 (6.0)	\$13,200 - \$17,900*	95

**CAMPUSES:** CC – CITY CAMPUS   CF – CITY FLINDERS   CK – CITY KING   CQ – CITY QUEEN   FN – FOOTSCRAY NICHOLSON   FP – FOOTSCRAY PARK  
SA – ST ALBANS   SS – SUNSHINE   W – WERRIBEE

**NOTE:** \*Information and fees listed above are for international students commencing a course in 2022. Fees are subject to approval and may change. For some courses, equipment and clothing is required at an additional cost to the course fees listed in this guide, and we recommend you check the website. ^^Intakes are February/March (1), July/August (2) and October/November (3). ^^IELTS requirement is based on academic test module (overall score, no band less than). \*All research fees are indicative and depend on field of research studied. \*\*From April 2022. †February 2022 only. ‡Entry requires HBSO as a prerequisite. ‡Entry requires CHC30113 as a prerequisite. \$High-achieving students in NBIT will be eligible to transfer into NBIP to take part in a 12-month paid IT internship. Visit [vu.edu.au/bachelor-of-it-professional-placement-scholarship-application](http://vu.edu.au/bachelor-of-it-professional-placement-scholarship-application) for more information. Entry requirements, fees, and CRICOS information in this guide are for courses at VU campuses in Melbourne only.

# HOW TO APPLY

## 1. Choose Your Course

More information about all our international courses is available at [vu.edu.au](http://vu.edu.au). It includes information specifically for international students. Check the entrance requirements and the course details.

[vu.edu.au/courses/international](http://vu.edu.au/courses/international)

## 2. Collect Supporting Documents

Gather the documents required to support your application. Providing the correct documents when you apply will ensure your application is processed promptly.

This may include:

- signed International Declaration Form
- a certified copy of the identity pages in your passport
- evidence of English language proficiency
- certified copies of your academic transcripts and graduation certificates
- VU Background Information Checklist and Financial Declaration
- Advanced Standing or Recognition of Prior Learning forms

## 3. Apply Online

Go to [eaams.vu.edu.au](http://eaams.vu.edu.au) to apply and attach the supporting documents.

The online system also allows you to:

- check your application status
- respond to University comments and requests
- accept your offer.

Make sure the information you enter and your signature match your passport.

## 4. Accept Your Offer

Log into your VU account to check your application status. If you have a conditional offer it means you need to provide more information. Once you receive a full offer you need to:

- sign your International Student Written Agreement
- pay your tuition fee.

Make sure your full name and signature match your passport. Once we have processed your acceptance, we will send you a Confirmation of Enrolment (CoE) that you need to apply for a student visa.

## EDUCATION AGENTS

You may wish to apply through a VU-approved education agent. Some agents may charge a fee for their services, so ask what the costs are before making an appointment. VU may require you to apply through an agent. If we require this, we will ask you to appoint an agent if you apply directly to us. To find a VU-registered agent near you, visit [eaams.vu.edu.au/BrowseAgents.aspx](http://eaams.vu.edu.au/BrowseAgents.aspx)

## CONTACT US

Phone: +61 3 9919 1164

[eaams.vu.edu.au/enquiry](http://eaams.vu.edu.au/enquiry)

[vu.edu.au/international](http://vu.edu.au/international)

## CONNECT WITH US

