

## NVivo 8 System Requirements

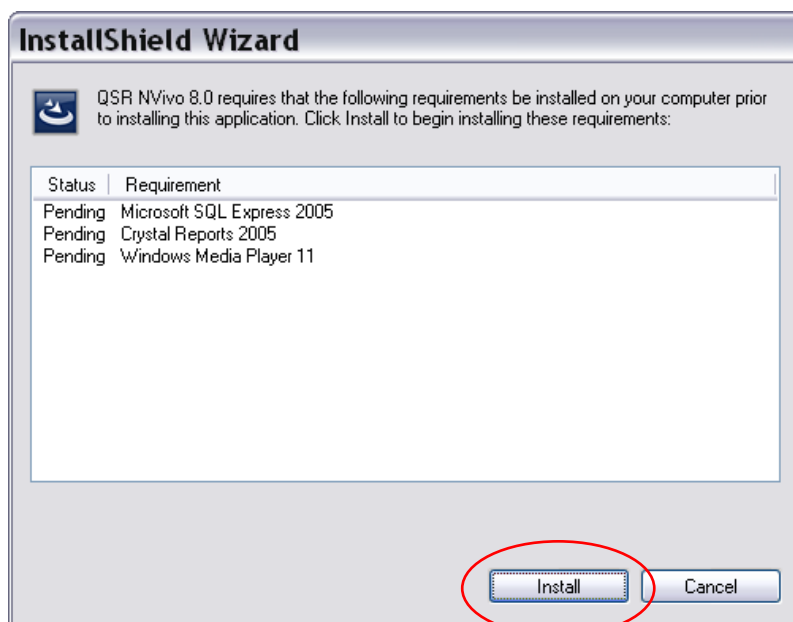
To run and install Nvivo 8, your computer will need to meet a series of hardware and software requirements. The minimum and recommended requirements are provided below.

Component	Minimum	Recommended
Processor	1.2 GHz Pentium III-compatible processor	1.6GHz Pentium 4-compatible processor or faster
Memory	512MB RAM	1GB RAM or more
Display	1024 x 768 screen resolution	1280 x 1024 screen resolution or higher
Operating System	Microsoft Windows 2000 Professional Service Pack 4	Windows XP Service Pack 2 or later, including Microsoft Windows Vista Service Pack 1
Hard Disk	Approximately 1GB of available hard-disk space	Approximately 2GB of available hard-disk space
Other		Internet connection

NVivo 8 is designed to operate on Microsoft Windows natively. If you are running the software on a virtual platform on a Mac, these system requirements may not apply. NVivo is designed to run on a Windows platform and the MAC platform is not formally supported by QSR.

- You may encounter the below message when you first start the setup process. Please make sure to install all the components listed in the window, this can be done by clicking on the Install button.

**Please note** that Nvivo 8 will not install if the below items are not installed on your machine first.



## NVivo 8 Installation Guide

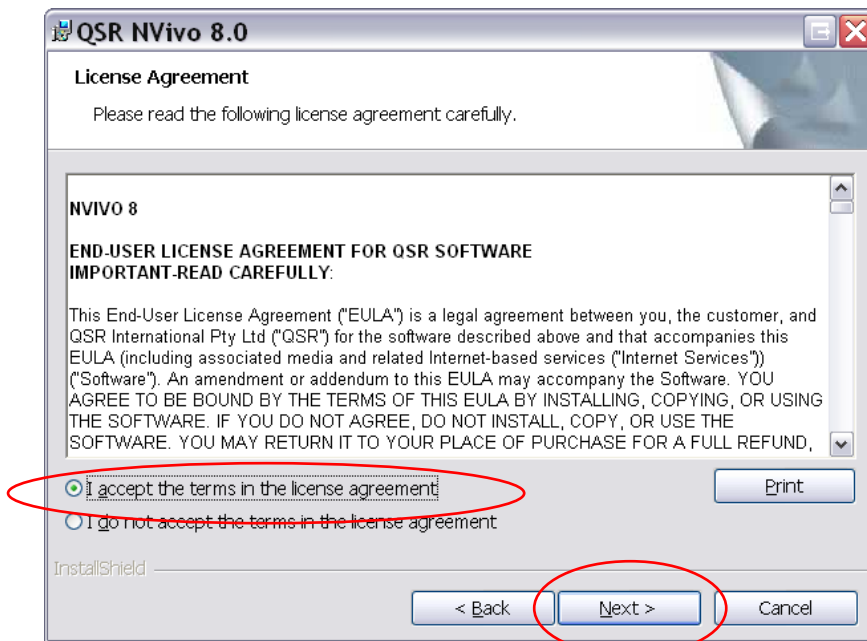
### Step 1

The initial installation screen will appear (see below) please select **Next**



### Step 2

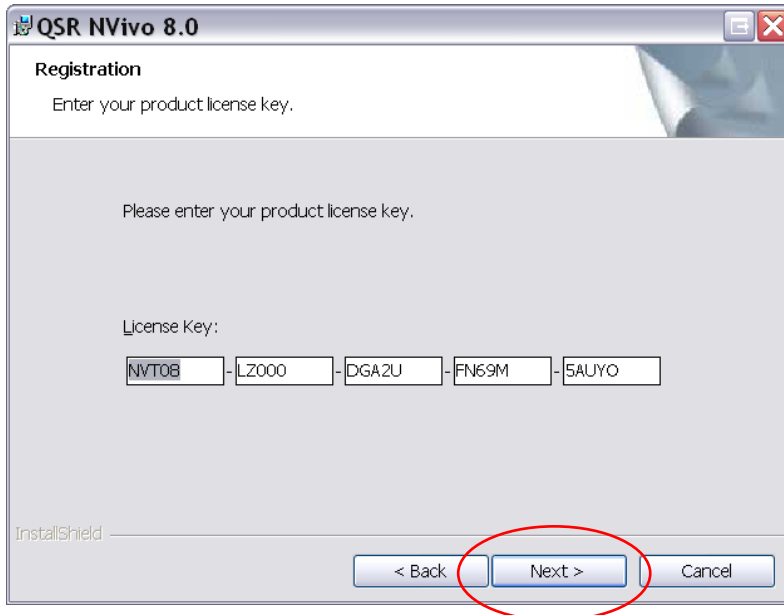
Please make sure to read the Nvivo 8 licence agreement. Once you have read and understood the agreement select **I accept the terms in the licence agreement** and click **Next** (see below)



### Step 3

Insert the product licence key (see below) then select **Next**

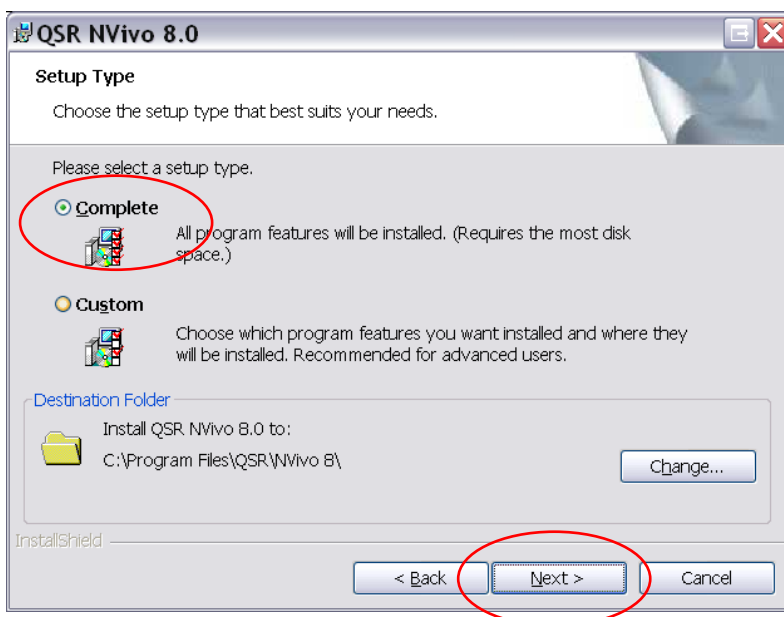
**KEY: NVT08-LZ000-DGA2U-FN69M-5AUYO**



### Step 4

On the screen will be two options (see below) **Complete** will be automatically selected.

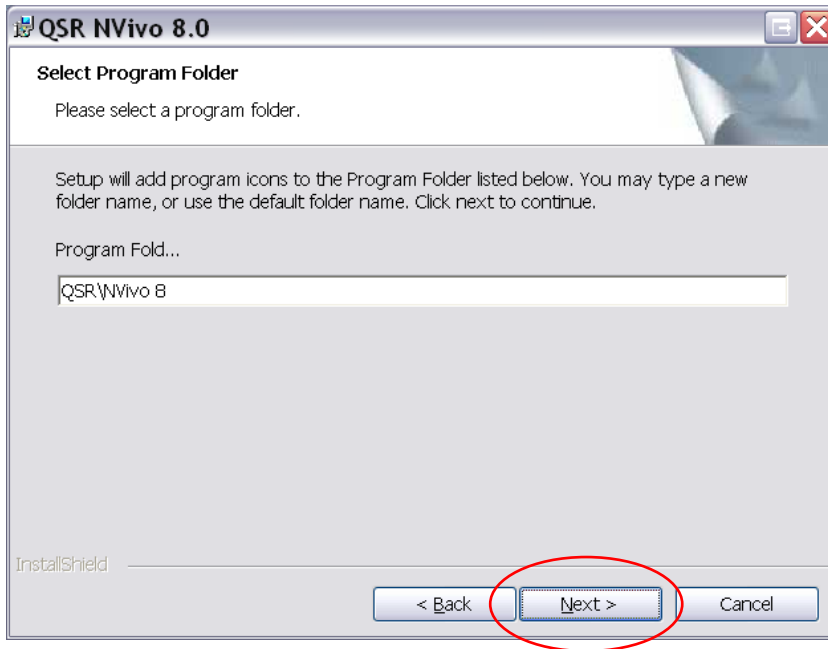
Please do not change this and click **Next**, you may change the destination folder for the installation if required but this is not recommended.



## Step 5

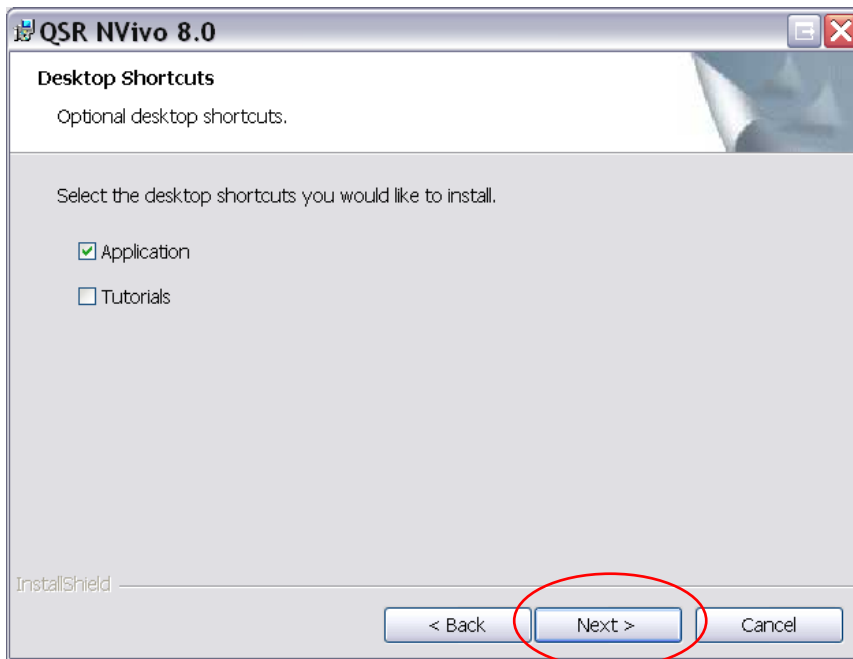
The following screen will ask you to confirm the program folder (see below). The setup will automatically create a default folder you may choose to type a new folder name or continue with the default.

Once a folder name is confirmed please select **Next**



## Step 6

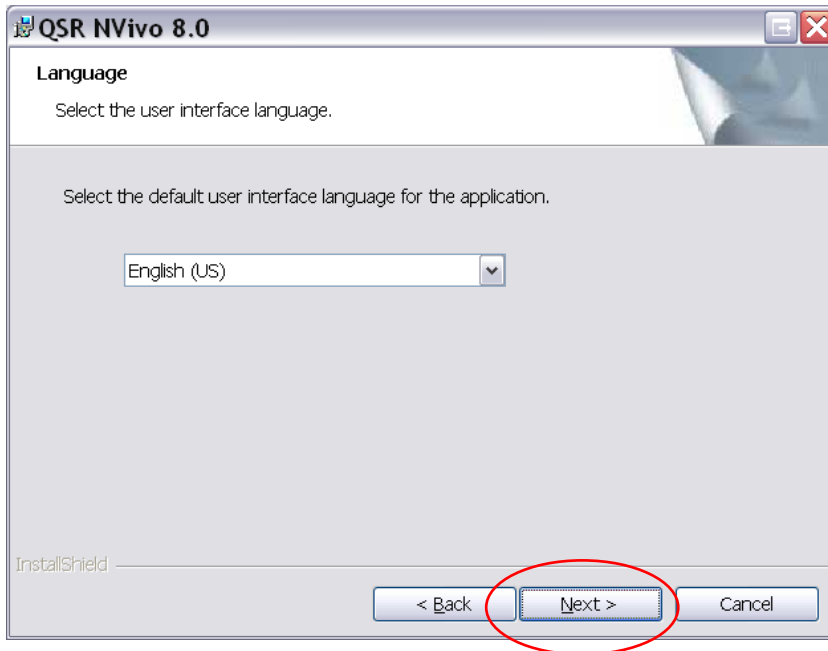
You may now select which desktop shortcuts you require. **Application** is selected as default but you may choose to include the **Tutorials** also or remove both. Once you have made your selection click **Next** (see below)



## Step 7

This screen will allow you to select a default language for the application to use (see below). English (US) is selected as default (see below) you may choose to change the language but this is not recommended.

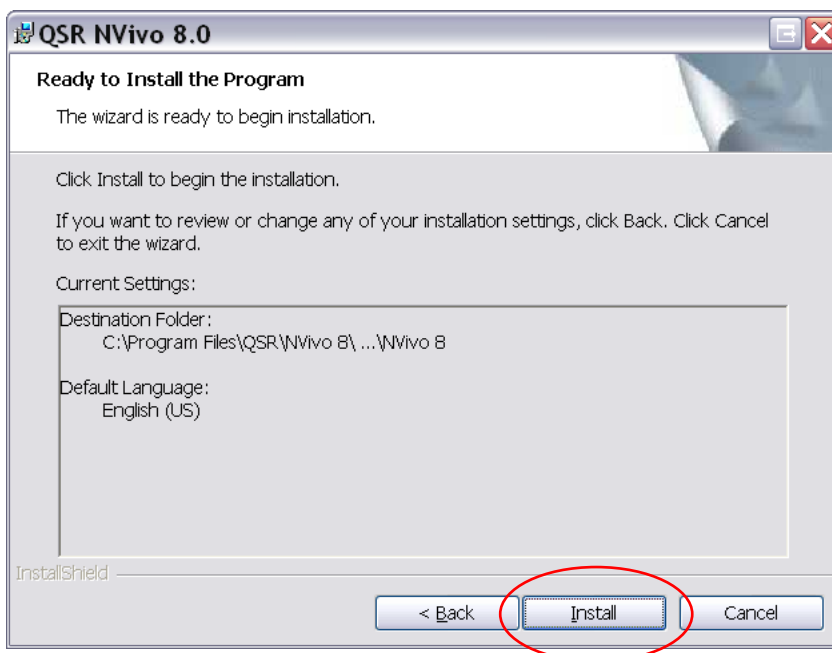
Once a language has been selected please click **Next** to continue installation.



## Step 8

You are now ready to begin installation of the application please select the **Install** button (see below)

Please note if any of the information below is incorrect please go **Back** and modify.



## Step 9

Installation is now complete. Please select the **Finish** button (see below)



If you have any problems with the installation of this software or any queries regarding the use of this software you may contact the ITS Service Desk on 9919-2777 or [servicedesk@vu.edu.au](mailto:servicedesk@vu.edu.au)