

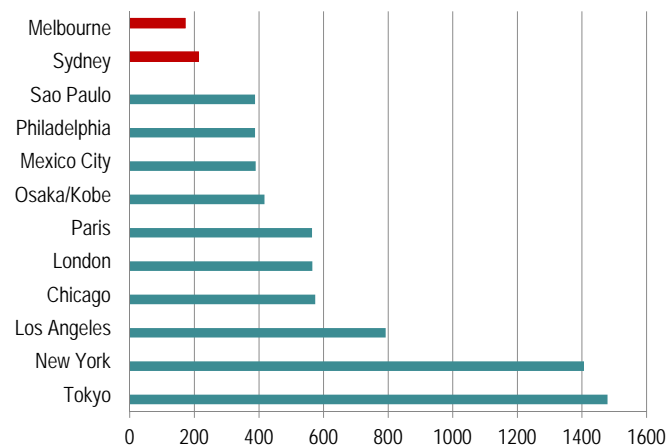
Melbourne as a globally competitive city

Presentation to Victoria at the Crossroads Conference
Prof. Bruce Rasmussen
Director
Centre for Strategic Economic Studies
24 August 2012

WWW.VU.EDU.AU



Melbourne, Sydney and the top ten city economies, 2008 (GCP \$ billion PPP)

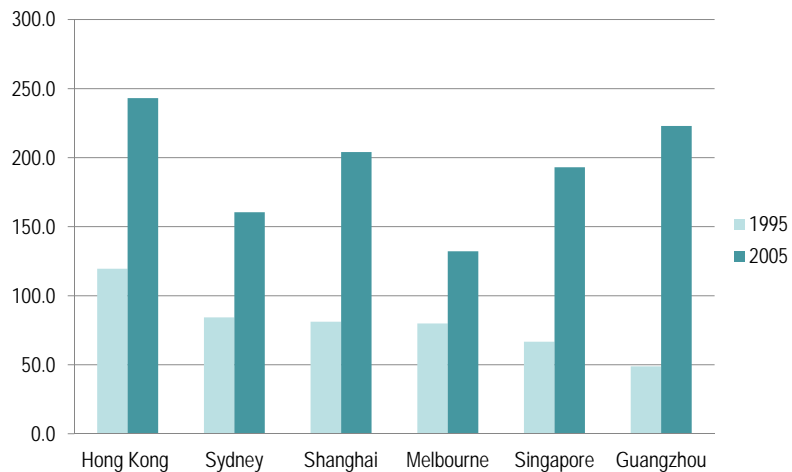


CENTRE FOR STRATEGIC ECONOMIC STUDIES - VICTORIA UNIVERSITY

Source: PWC, *UK Economic Outlook*
November 2009.

2

Melbourne, Sydney and its neighbours (GCP \$ billion PPP)



CENTRE FOR STRATEGIC ECONOMIC STUDIES – VICTORIA UNIVERSITY

Source: OECD.StatExtracts 2012, *Metropolitan Regions*; Yale University, 2012, *Geographically Based Economic Data (G-Econ)*.

3

Top 50 cities by region ranked by GCP 2008 and 2025

	2008	2025	Change
Asia	12	17	+5
Australia	2	2	
Europe	7	4	-3
Middle East	3	4	+1
North America	23	19	-4
South America	3	4	+1
Total	50	50	

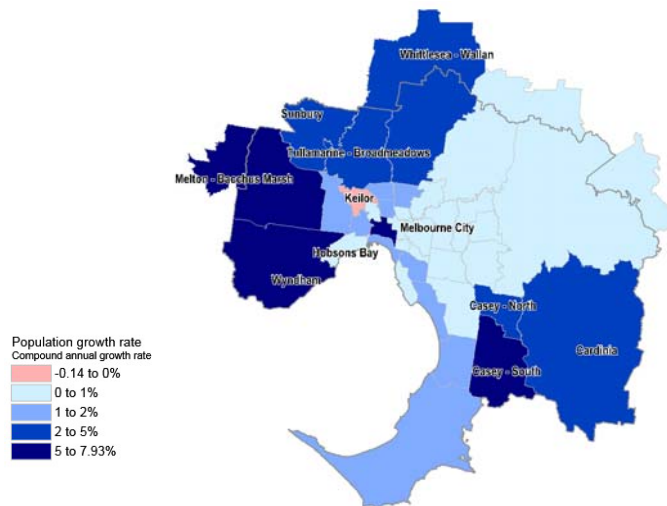
Bangkok
Dhaka
Jakarta
Kolkata (Calcutta)
Tianjin

CENTRE FOR STRATEGIC ECONOMIC STUDIES – VICTORIA UNIVERSITY

Source: PWC, *UK Economic Outlook*
November 2009.

4

1. Melbourne population growth by SA3, 2001-2011



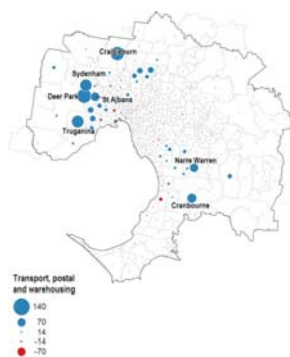
CENTRE FOR STRATEGIC ECONOMIC STUDIES - VICTORIA UNIVERSITY

Source: ABS Census 2011.

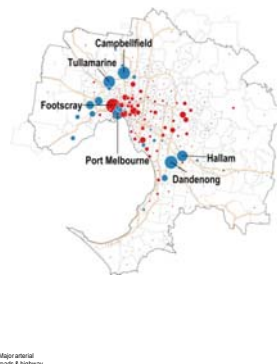
5

2. Consolidation of industrial nodes in outer south east, north and west

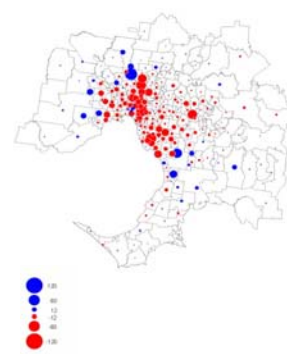
Transport, Postal and Warehousing establishments change FY 2001-FY 2011



Wholesale Trade establishments change FY 2001-FY 2011



Manufacturing establishments change FY 2001-FY 2011



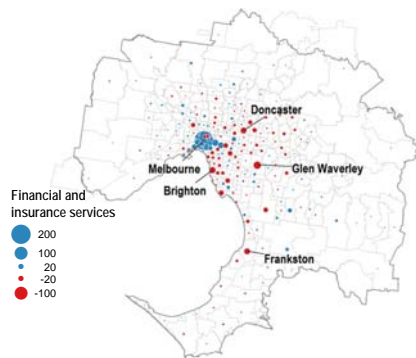
CENTRE FOR STRATEGIC ECONOMIC STUDIES - VICTORIA UNIVERSITY

Source: CSES analysis of Worksafe Data.

6

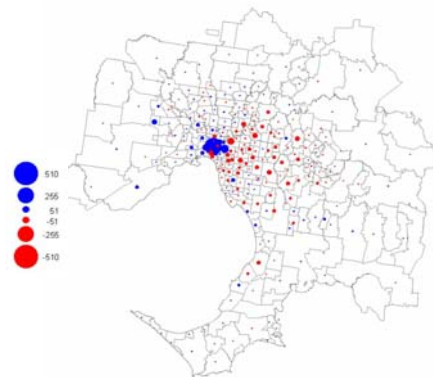
3. Agglomeration and the city

**Financial Services
business establishments
net change, 2000-01 to 2010-11**



CENTRE FOR STRATEGIC ECONOMIC STUDIES – VICTORIA UNIVERSITY

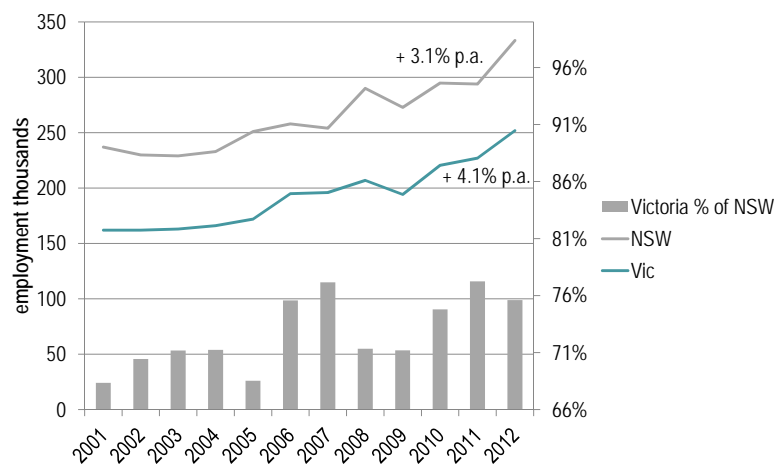
**Professional Services
business establishments
net change, FY 2001 – FY 2011**



Source: CSES analysis of Worksafe Data.

7

Professional Services employment, Victoria and NSW, 2001-2012

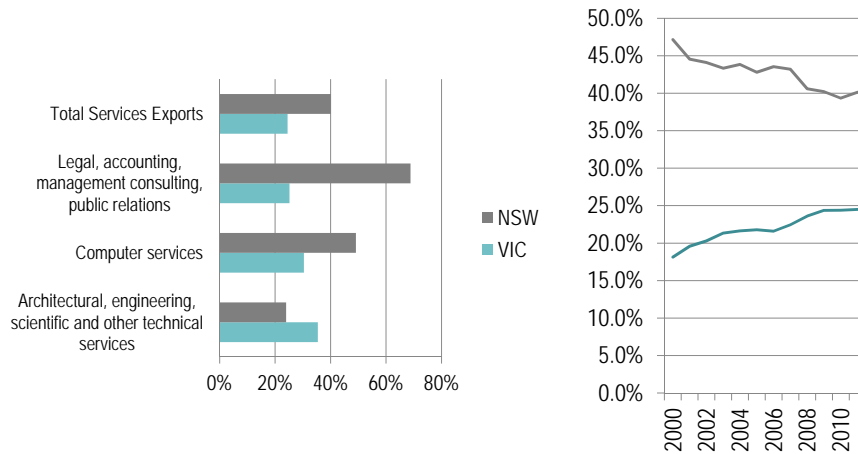


CENTRE FOR STRATEGIC ECONOMIC STUDIES – VICTORIA UNIVERSITY

Source: ABS 2012, *Labour Force, Australia, May 2012*, Cat. No. 6291.0.55.003.

8

Victorian and NSW share of Australian services exports, 2000-11



CENTRE FOR STRATEGIC ECONOMIC STUDIES – VICTORIA UNIVERSITY

Source: ABS 2012, *International Trade in Services*, Cat. No. 5368.0.55.004.

9

World City Network based on location of professional services firms

Rank	City	Global network connectivity
1	London	100
2	New York	100
3	Hong Kong	83
4	Paris	78
5	Singapore	75
6	Tokyo	74
7	Sydney	71
8	Milan	69
9	Shanghai	69
10	Beijing	68
43	Melbourne	44

Source: Derudder, B. et al. 2010, 'Pathways of change: Shifting connectivities in the world city network, 2000-08', *Urban Studies*, vol. 47, pp. 1861-77.

CENTRE FOR STRATEGIC ECONOMIC STUDIES – VICTORIA UNIVERSITY

10

Implications

1. Investment in new infrastructure to:
 - Support suburban population growth particularly in the West
 - Improve the transport links between the logistics and manufacturing nodes
 - Facilitate the continued development of the CBD for jobs and population growth
2. Establish stronger linkages and engagement with rapidly growing neighbouring cities in Asia
 - Facilitate the export of producer services from Melbourne to other world cities, especially in the Asian region

CENTRE FOR STRATEGIC ECONOMIC STUDIES – VICTORIA UNIVERSITY

11

CONTACT DETAILS

PROF. BRUCE RASMUSSEN
DIRECTOR
CENTRE FOR STRATEGIC ECONOMIC STUDIES

PHONE +61 3 9919 1342
FAX +61 3 9919 1350
EMAIL bruce.rasmussen@vu.edu.au

WWW.VU.EDU.AU
CENTRE FOR STRATEGIC ECONOMIC STUDIES – VICTORIA UNIVERSITY

